

Capelin in Divisions 3NO

Advice June 2018 for 2019 - 2021

Recommendation for 2019-2021

No directed fishery.

Management objectives

No explicit management plan or management objectives defined by the Commission. General convention objectives (GC Doc. 08-03) are applied. Advice is based on qualitative evaluation of biomass indices in relation to historic levels.

Convention objectives	Status	Comment/consideration
Restore to or maintain at B_{msy}	●	B_{msy} unknown, stock at low level
Eliminate overfishing	●	No directed fishery
Apply Precautionary Approach	○	Reference points not defined
Minimise harmful impacts on living marine resources and ecosystems	●	VME closures in effect, no directed fishing
Preserve marine biodiversity	○	Cannot be evaluated

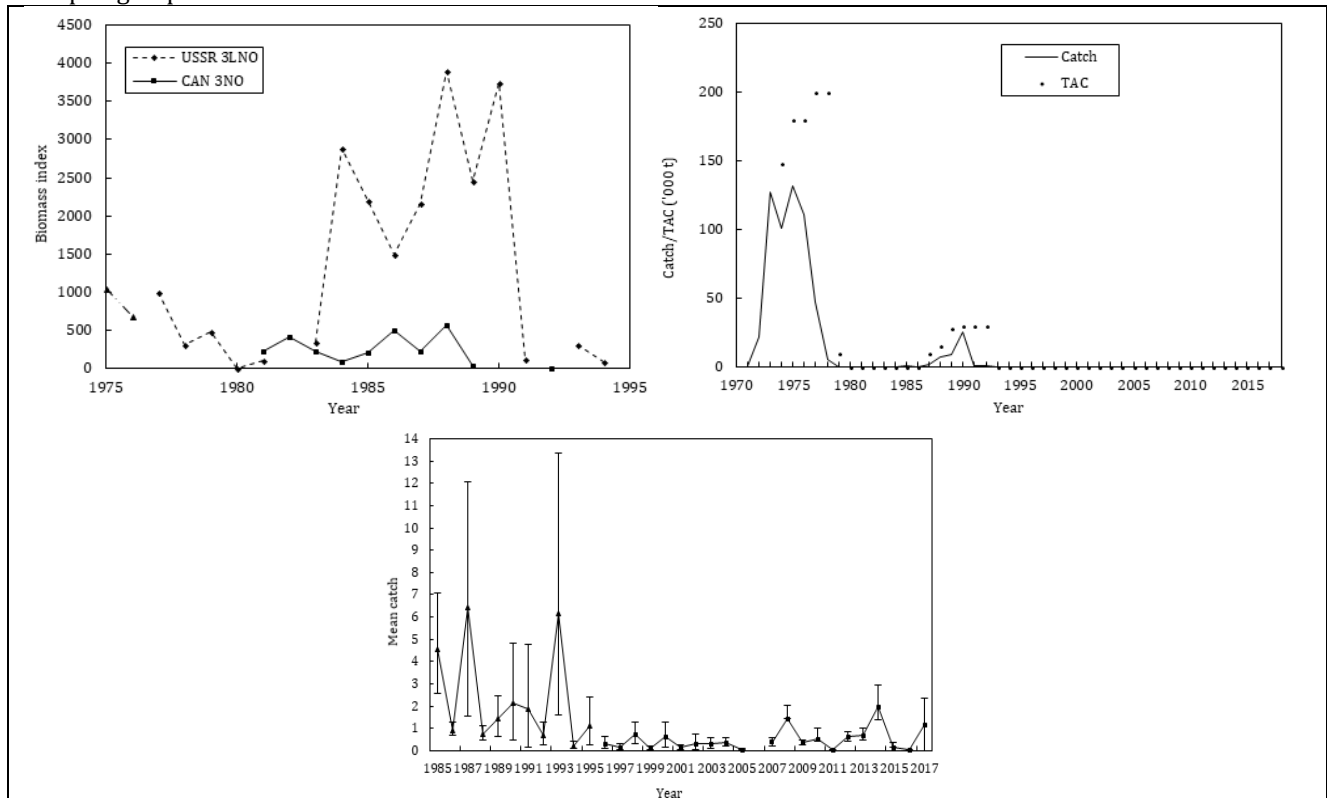
- OK
- Intermediate
- Not accomplished
- Unknown

Management unit

The capelin stock is distributed in Div. 3NO, mainly on the Grand Bank.

Stock status

Acoustic surveys series terminated in 1994 indicated a stock at a low level. Although biomass indices have increased in recent years, bottom trawl surveys are not considered a satisfactory basis for a stock assessment of a pelagic species.



Reference points

Not defined.



Projections

Quantitative assessment of risk at various catch options is not possible for this stock at this time.

Assessment

Assessment was based on evaluation of trends in acoustic survey data (1975 – 1994) and bottom trawl surveys (1995 – 2017). Bottom-trawling is not a satisfactory basis for a stock assessment of a pelagic species. The assessment is only indicative of major changes in abundance.

Next full assessment is scheduled for 2021.

Human impact

Low fishery related mortality due to moratorium and low bycatch in other fisheries. Other sources (e.g. pollution, shipping, oil industry) are considered minor.

Biological and Environmental Interactions

Changes in growth, maturity and recruitment are linked to temperature on the Grand Banks. The Grand Bank (3LNO) EPU is currently experiencing low productivity conditions and biomass has declined across multiple trophic levels and stocks since 2014.

Fishery

Capelin was caught in a directed trawl fishery. There is low bycatch in other trawl fisheries. The directed fishery was closed in 1992 and the closure has continued through 2017. No catches have been reported for this stock from 1993 except 1 t of Spanish catch in 2014 and 5 t Estonian catch in 2016. In 2017, 11t of discards were reported. Recent catch estimates and TACs (t) are as follows:

	2009	2010	2011	2012	2013	2014	2015	2016	2017	2018
TAC	ndf	ndf	ndf	ndf	ndf	ndf	ndf	ndf	ndf	ndf
STATLANT 21	0	0	0	0	0	1	0	5	0	

ndf no directed fishing

Effects of the fishery on the ecosystem

No fishery.

Special comments

Bottom-trawling is not a satisfactory basis for a stock assessment of a pelagic species and survey results are indicative only. Investigations to evaluate the status of capelin stock should utilize trawl acoustic surveys to allow comparison with historical time series.

Source of Information

SCR Doc. 18/046, SCS Doc. 18/007