

Greenland halibut in Division 1A inshore - Upernavik

Advice June 2022 for 2023-2024

Recommendation for 2023 - 2024

Scientific Council recommends that catch should not exceed 6 070 t.

Management objectives

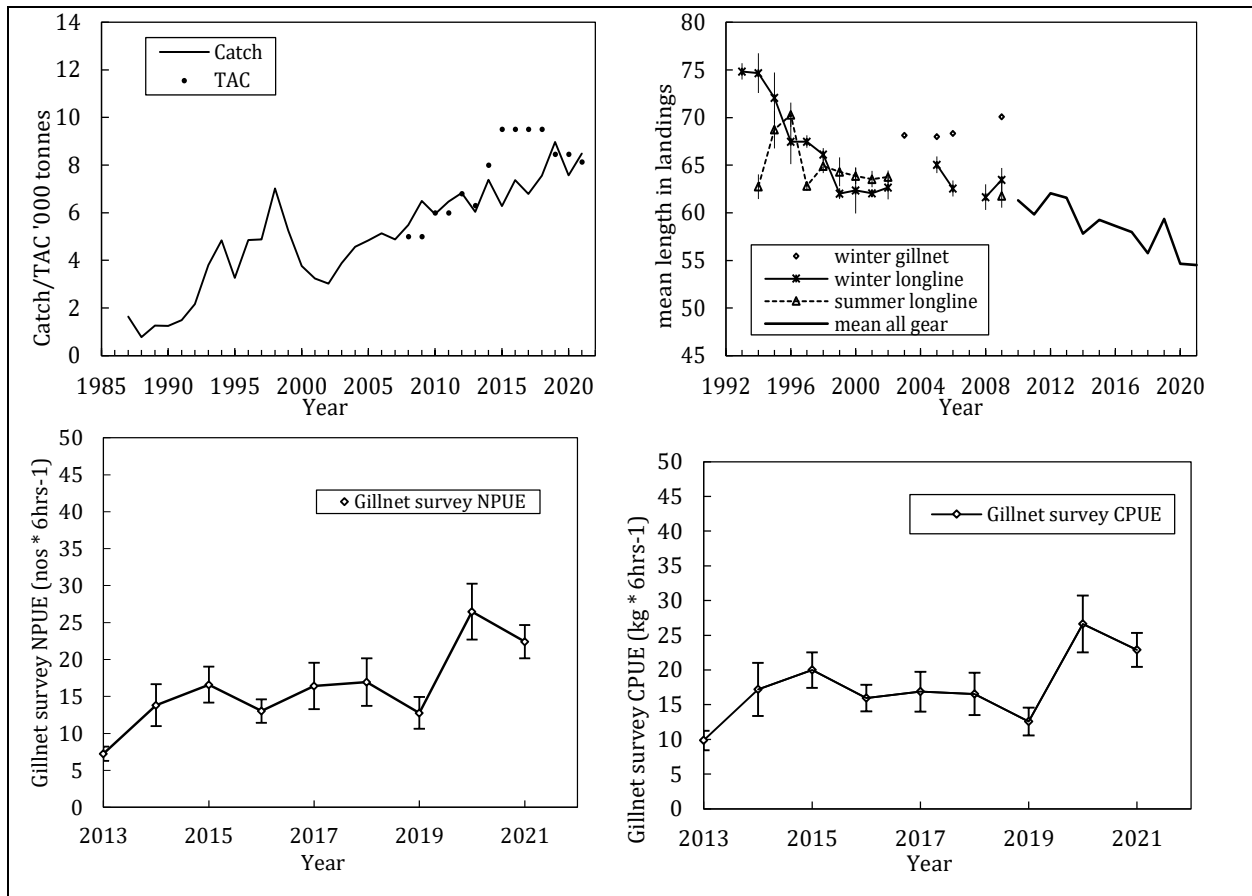
No explicit management plan or management objectives have been defined by the Government of Greenland. A management plan is currently under development.

Management unit

Three inshore stocks in Subarea 1A (Disko Bay, Uummannaq, and Upernavik) are believed to recruit from the SA 0+ 1 offshore spawning stock (in the Davis Strait), and there is little migration between the separated areas and the stock in SA 0 + 1 offshore. Separate advice is given for each area, within the specific management unit, in Subarea 1A inshore.

Stock status

The Upernavik scientific gillnet survey NPUE and CPUE increased relative to earlier levels in 2020 and 2021.



Reference points

Could not be established.

Assessment

No analytical assessment was performed. Survey indices, and mean length in the landings were considered the best information to monitor the stock.



Human impact

Mainly fishery-related mortality. Other mortality sources (e.g. pollution, shipping, oil-industry) are undocumented.

Biological and Environmental interactions

Unknown

Fishery

Catches increased from the mid-1980s and peaked in 1998 at a level of 7 000 t. Landings then decreased sharply, but during the past 15 years, catch has gradually increased to a level between 7 500 and 9 000 t.

Recent catch estimates ('000 ton) are as follows:

	2013	2014	2015	2016	2017	2018	2019	2020	2021	2022
TAC	8.0	9.5	9.5	9.5	9.5	9.5	8.5	8.5	10.0	9.3
Stacfis	6.0	7.4	6.3	7.4	6.8	7.6	9.0	7.6	8.5	

Basis for advice

The ICES Harvest Control Rule 3.2 for data limited stocks was used as a basis for giving TAC advice (mean survey index y2019-2021/mean y2015-2018=1.19). Multi-year advice is recommended when applying this index-ratio based rule. Also, Greenland has requested advice for as many years as is considered appropriate. A two-year advice cycle is suggested at this time.

This results in the following advised catch:

2023 and 2024 $Catch_{advised} = 6070$ t (catch advised for 2021 and 2022=5058*1.2)

This rule should be reviewed in the next assessment.

Effects of the fishery on the ecosystem

Greenland halibut in the area is targeted with longlines and gillnets. Both gears select adult fish with large body size and do not retain recruits or small-sized fish. Ghost fishing by lost gillnets has been observed, but its effects are unknown.

Special comments

Recruits are mainly received from the offshore stock in SA 0 + 1 offshore.

Sources of Information

SCR Doc. 22/009, 033, 038; SCS Doc. 22/011.