

**Greenland halibut in Division 1A inshore - Uummannaq**

Advice June 2022 for 2023-2024

**Recommendation for 2023 - 2024**

Scientific Council recommends that TAC in 2023 and 2024 should not exceed 5153 t.

**Management objectives**

No explicit management plan or management objectives has been defined by the Government of Greenland. A management plan is currently under development.

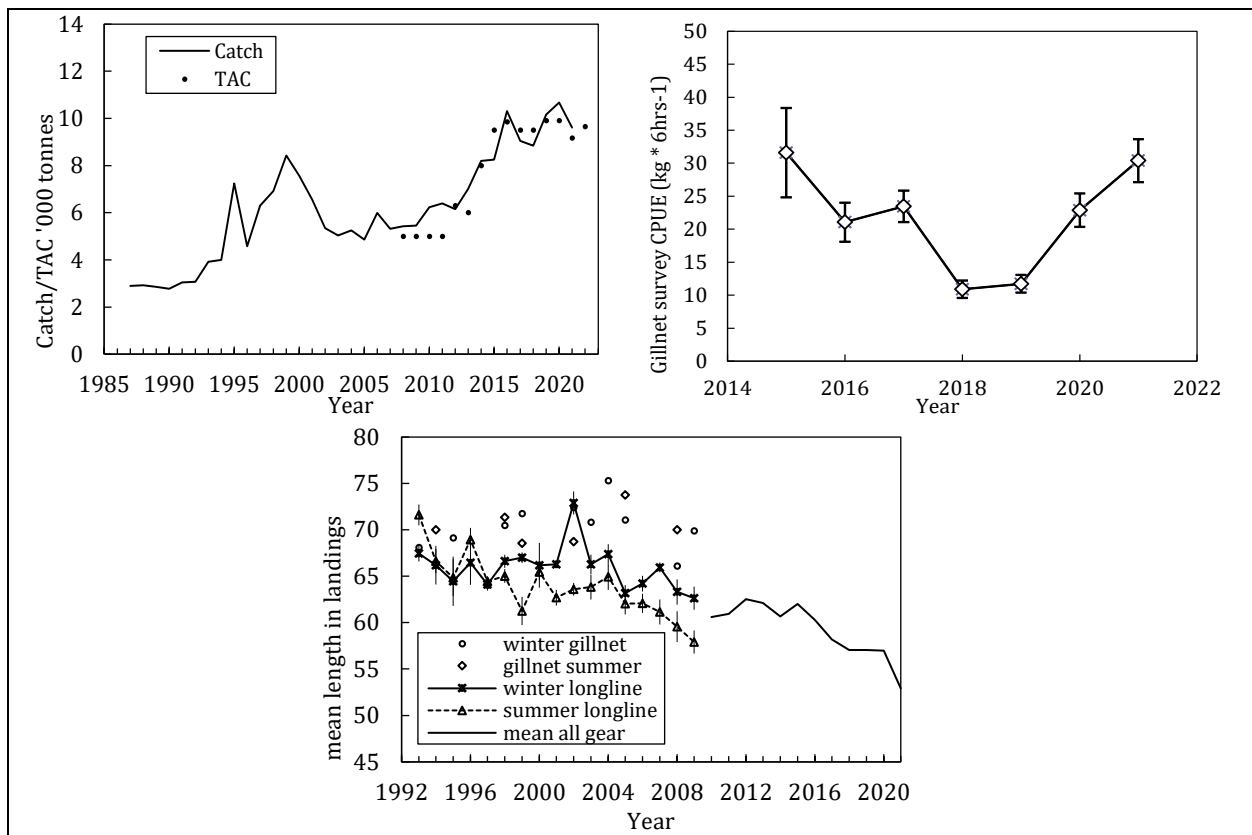
**Management unit**

Three inshore stocks in Subarea 1A (Disko Bay, Uummannaq, and Upernavik) are believed to recruit from the SA 0+ 1 offshore spawning stock (in the Davis Strait), and there is little migration between the separated areas and the stock in SA 0 + 1 offshore. Separate advice is given for each area, within the specific management unit, in Subarea 1A inshore.

**Stock status**

Although the size of the landed fish decreased substantially from 2020 to 2021, the gillnet index, which was lower in 2018 and 2019, has returned to its former level.

The length distribution in the gillnet survey further indicates the presence of large fish in the interval between 50 and 60 cm, and also a higher number of smaller recruits than previously observed.



**Reference points**

Could not be established.



## Assessment

No analytical assessment was performed. Survey indices, and mean length in the landings were considered the best information to monitor the stock.

### *Human impact*

Mainly fishery-related mortality. Other mortality sources (e.g. pollution, shipping, oil-industry) are undocumented.

### *Biological and Environmental interactions*

Unknown

## Fishery

Catches in the Uummannaq fjord gradually increased from the 1980s reaching 8 425 t in 1999, but then decreased to ~ 5 000 in 2002. Since 2004, catches gradually increased before stabilizing around 10 000 t/year.

Recent catch estimates ('000 ton) are as follows:

	2013	2014	2015	2016	2017	2018	2019	2020	2021	2022
1A Uummannaq - TAC	7.5	8.4	9.5	9.8	9.5	9.5	9.9	9.5	9.6	9.6
1A Uummannaq - catch	7.0	8.2	8.2	10.3	9.0	8.8	10.2	10.7	9.6	
STACFIS Total	7.0	8.2	8.2	10.3	9.0	8.8	10.2	10.7	9.6	

## Basis for advice

The ICES Harvest Control Rule 3.2 for data limited stocks was used as a basis for giving TAC advice (mean survey index y2019-2021/mean y2015-2018=0.996). Multi-year advice is recommended when applying this index-ratio based rule. Also, Greenland has requested advice for as many years as is considered appropriate. A two-year advice cycle is suggested at this time.

This results in the following advised catch:

2023 and 2024 Catch<sub>advised</sub> = 5 153t (catch advised for 2021 and 2022=5153\*0.996)

This rule should be reviewed in the next assessment.

## Effects of the fishery on the ecosystem

Greenland halibut in the area is targeted with longlines and gillnets. Both gears select adult fish with large body size and do not retain recruits or small-sized fish. Ghost fishing by lost gillnets has been observed, but its effects in the Uummannaq fjord is unknown.

## Special comments

Recruits are mainly received from the offshore stock in SA 0 + 1 offshore.

## Sources of Information

SCR Doc. 22/010, 029, 037; SCS Doc. 22/011.