



45th ANNUAL MEETING OF NAFO - SEPTEMBER 2023

Changes to Article 17.3 of the NAFO CEM

The objective of the following edits to the NAFO CEM is to maintain VME closures 7a, 11a, 14a, and 14b to 31 December 2026 and incorporate these closures with the other VME Area closures outlined in article 17.3. and Table 7 of the NAFO CEM.

Article 17 – Area Restrictions for Bottom Fishing Activities

Vulnerable Marine Ecosystem Area Closures

3. Until 31 December 2026, no vessel shall engage in bottom fishing activities in areas 1-14b3 illustrated in Figure 5 and defined by connecting the coordinates specified in Table 7a in numerical order and back to coordinate 1.

Table 7a. Boundary Points Delineating the Vulnerable Marine Ecosystem Area Closures in the NAFO Regulatory Area Referenced in Article 17.3.

	Description	Coordinate No.	Latitude	Longitude
1	Tail of the Bank	1.1	44° 02' 53.88" N	48° 49' 09.48" W
		1.2	44° 21' 31.32" N	48° 46' 48.00" W
		1.3	44° 21' 34.56" N	48° 50' 32.64" W
		1.4	44° 11' 48.12" N	48° 50' 32.64" W
		1.5	44° 02' 54.60" N	48° 52' 52.32" W
		1.6	44° 00' 01.12" N	48° 53' 28.75" W
		1.7	43° 59' 57.52" N	48° 49' 26.47" W
2	Flemish Pass/ Eastern Canyon	2.1	44° 50' 56.40" N	48° 43' 45.48" W
		2.2	46° 18' 54.72" N	46° 47' 51.72" W
		2.3	46° 25' 28.56" N	46° 47' 51.72" W
		2.4	46° 46' 32.16" N	46° 55' 14.52" W
		2.5	47° 03' 29.16" N	46° 40' 04.44" W
		2.6	47° 11' 47.04" N	46° 57' 38.16" W
		2.7	46° 40' 40.80" N	47° 03' 04.68" W
		2.8	46° 30' 22.20" N	47° 11' 02.93" W
		2.9	46° 17' 13.30" N	47° 15' 46.64" W
		2.10	46° 07' 01.56" N	47° 30' 36.36" W
		2.11	45° 49' 06.24" N	47° 41' 17.88" W
		2.12	45° 19' 43.32" N	48° 29' 14.28" W
2.13	44° 53' 47.40" N	48° 49' 32.52" W		
3	Beothuk Knoll	3.1	45° 49' 10.20" N	46° 06' 02.52" W
		3.2	45° 59' 47.40" N	46° 06' 02.52" W
		3.3	45° 59' 47.40" N	46° 18' 08.28" W
		3.4	45° 49' 10.20" N	46° 18' 08.28" W
4	Eastern Flemish Cap	4.1	46° 44' 34.80" N	44° 03' 14.40" W
		4.2	46° 58' 19.20" N	43° 34' 16.32" W
		4.3	47° 10' 30.00" N	43° 34' 16.32" W
		4.4	47° 10' 30.00" N	43° 20' 51.72" W
		4.5	46° 48' 35.28" N	43° 20' 51.72" W



	Description	Coordinate No.	Latitude	Longitude
		4.6	46° 39' 36.00" N	43° 58' 08.40" W
5	Northeast Flemish Cap	5.1	47° 47' 46.00" N	43° 29' 07.00" W
		5.2	47° 40' 54.47" N	43° 27' 06.71" W
		5.3	47° 35' 57.48" N	43° 43' 09.12" W
		5.4	47° 51' 14.40" N	43° 48' 35.64" W
		5.5	48° 27' 19.44" N	44° 21' 07.92" W
		5.6	48° 41' 37.32" N	43° 45' 08.08" W
		5.7	48° 37' 13.00" N	43° 41' 24.00" W
		5.8	48° 30' 15.00" N	43° 41' 32.00" W
		5.9	48° 25' 08.00" N	43° 45' 20.00" W
		5.10	48° 24' 29.00" N	43° 50' 50.00" W
		5.11	48° 14' 20.00" N	43° 48' 19.00" W
		5.12	48° 09' 53.00" N	43° 49' 24.00" W
6	Sackville Spur	6.1	48° 18' 51.12" N	46° 37' 13.44" W
		6.2	48° 28' 51.24" N	46° 08' 33.72" W
		6.3	48° 49' 37.20" N	45° 27' 20.52" W
		6.4	48° 56' 30.12" N	45° 08' 59.99" W
		6.5	49° 00' 09.72" N	45° 12' 44.64" W
		6.6	48° 21' 12.24" N	46° 39' 11.16" W
7	Northern Flemish Cap	7.1	48° 25' 02.28" N	45° 17' 16.44" W
		7.2	48° 25' 02.28" N	44° 54' 38.16" W
		7.3	48° 19' 08.76" N	44° 54' 38.16" W
		7.4	48° 19' 08.76" N	45° 01' 58.56" W
		7.5	48° 20' 29.76" N	45° 01' 58.56" W
		7.6	48° 20' 29.76" N	45° 17' 16.44" W
7a	Northern Flemish Cap	7a.1	48° 25' 02.28" N	45° 17' 16.44" W
		7a.2	48° 25' 02.28" N	44° 54' 38.16" W
		7a.3	48° 19' 08.76" N	44° 54' 38.16" W
		7a.4	48° 18' 06.84" N	44° 44' 22.81" W
		7a.5	48° 08' 18.42" N	44° 23' 10.57" W
		7a.6	48° 10' 08.98" N	44° 15' 54.97" W
		7a.7	48° 19' 30.47" N	44° 26' 38.40" W
		7a.8	48° 24' 57.13" N	44° 37' 58.40" W
		7a.9	48° 26' 21.37" N	44° 54' 34.60" W
		7a.10	48° 27' 52.20" N	45° 17' 19.25" W
8	Northern Flemish Cap	8.1	48° 38' 07.95" N	45° 19' 31.92" W
		8.2	48° 38' 07.95" N	45° 11' 44.36" W
		8.3	48° 40' 09.84" N	45° 11' 44.88" W
		8.4	48° 40' 09.84" N	45° 05' 35.52" W
		8.5	48° 35' 56.40" N	45° 05' 35.52" W
		8.6	48° 35' 56.40" N	45° 19' 31.92" W
		8.7	48° 34' 23.52" N	45° 26' 18.96" W
		8.8	48° 36' 55.08" N	45° 31' 15.96" W
9	Northern Flemish Cap	9.1	48° 34' 23.52" N	45° 26' 18.96" W
		9.2	48° 36' 55.08" N	45° 31' 15.96" W
		9.3	48° 30' 18.36" N	45° 39' 42.48" W
		9.4	48° 12' 06.60" N	45° 54' 12.94" W
		9.5	48° 17' 11.82" N	45° 47' 25.36" W
		9.6	48° 16' 07.06" N	45° 45' 48.19" W
		9.7	48° 27' 30.60" N	45° 34' 40.44" W
10	Northwest Flemish Cap	10.1	47° 49' 41.51" N	46° 22' 48.18" W
		10.2	47° 47' 17.14" N	46° 17' 27.91" W
		10.3	47° 58' 42.28" N	46° 06' 43.74" W

	Description	Coordinate No.	Latitude	Longitude
		10.4	47° 59' 15.77" N	46° 07' 57.76" W
		10.5	48° 07' 48.97" N	45° 59' 58.46" W
		10.6	48° 09' 34.66" N	46° 04' 08.54" W
		10.7	48° 07' 59.70" N	46° 05' 38.22" W
		10.8	48° 09' 13.46" N	46° 09' 31.03" W
		10.9	47° 51' 30.13" N	46° 26' 15.61" W
11	Northwest Flemish Cap	11.1	47° 25' 48.00" N	46° 21' 23.76" W
		11.2	47° 30' 01.44" N	46° 21' 23.76" W
		11.3	47° 30' 01.44" N	46° 27' 33.12" W
		11.4	47° 25' 48.00" N	46° 27' 33.12" W
11a	Northwest Flemish Cap	11a.1	47° 27' 36.29" N	46° 21' 23.69" W
		11a.2	47° 30' 01.44" N	46° 21' 23.76" W
		11a.3	47° 30' 01.44" N	46° 27' 33.12" W
		11a.4	47° 37' 38.86" N	46° 16' 31.12" W
		11a.5	47° 34' 39.61" N	46° 12' 03.92" W
		11a.6	47° 32' 28.90" N	46° 16' 26.58" W
		11a.7	47° 32' 10.00" N	46° 14' 29.87" W
		11a.8	47° 28' 27.80" N	46° 16' 05.74" W
12	Northwest Flemish Cap	12.1	48° 12' 06.60" N	45° 54' 12.94" W
		12.2	48° 17' 11.82" N	45° 47' 25.36" W
		12.3	48° 16' 07.06" N	45° 45' 48.19" W
		12.4	48° 11' 03.32" N	45° 52' 40.63" W
13	Beothuk Knoll	13.1	46° 13' 58.80" N	45° 41' 13.20" W
		13.2	46° 13' 58.80" N	46° 02' 24.00" W
		13.3	46° 21' 50.40" N	46° 02' 24.00" W
		13.4	46° 21' 50.40" N	45° 56' 48.12" W
		13.5	46° 20' 14.32" N	45° 55' 43.93" W
		13.6	46° 20' 14.32" N	45° 41' 13.20" W
14a	Eastern Flemish Cap	14a.1	47° 45' 24.44" N	44° 03' 06.44" W
		14a.2	47° 47' 54.35" N	44° 03' 06.44" W
		14a.3	47° 50' 11.33" N	44° 03' 34.49" W
		14a.4	47° 50' 10.86" N	43° 58' 28.99" W
		14a.5	47° 47' 54.35" N	43° 59' 23.39" W
		14a.6	47° 45' 55.19" N	43° 58' 08.94" W
		14a.7	47° 44' 44.59" N	44° 02' 41.50" W
14b	Eastern Flemish Cap	14b.1	47° 35' 21.77" N	43° 56' 50.10" W
		14b.2	47° 37' 33.53" N	43° 52' 56.50" W
		14b.3	47° 30' 04.79" N	43° 48' 18.54" W
		14b.4	47° 27' 34.88" N	43° 48' 18.54" W
		14b.5	47° 27' 34.88" N	43° 52' 00.34" W

3 bis. Until 31 December 2023, no vessel shall engage in bottom fishing activities in the areas illustrated in Figure 5 and defined by connecting the coordinates specified in Table 7b in numerical order and back to coordinate 1.

Table 7b. Boundary Points Delineating the Vulnerable Marine Ecosystem Area Closures in the NAFO Regulatory Area Referenced in Article in Article 17.3 bis.

	Description	Coordinate No.	Latitude	Longitude
7a	Northern Flemish Cap	7a.1	48° 25' 02.28" N	45° 17' 16.44" W
		7a.2	48° 25' 02.28" N	44° 54' 38.16" W
		7a.3	48° 19' 08.76" N	44° 54' 38.16" W

	Description	Coordinate No.	Latitude	Longitude
		7a.4	48° 18' 06.84" N	44° 44' 22.81" W
		7a.5	48° 08' 18.42" N	44° 23' 10.57" W
		7a.6	48° 10' 08.98" N	44° 15' 54.97" W
		7a.7	48° 19' 30.47" N	44° 26' 38.40" W
		7a.8	48° 24' 57.13" N	44° 37' 58.40" W
		7a.9	48° 26' 21.37" N	44° 54' 34.60" W
		7a.10	48° 27' 52.20" N	45° 17' 19.25" W
11a	Northwest Flemish Cap	11a.1	47° 27' 36.29" N	46° 21' 23.69" W
		11a.2	47° 30' 01.44" N	46° 21' 23.76" W
		11a.3	47° 30' 01.44" N	46° 27' 33.12" W
		11a.4	47° 37' 38.86" N	46° 16' 31.12" W
		11a.5	47° 34' 39.61" N	46° 12' 03.92" W
		11a.6	47° 32' 28.90" N	46° 16' 26.58" W
		11a.7	47° 32' 10.00" N	46° 14' 29.87" W
		11a.8	47° 28' 27.80" N	46° 16' 05.74" W
14a	Eastern Flemish Cap	14a.1	47° 45' 24.44" N	44° 03' 06.44" W
		14a.2	47° 47' 54.35" N	44° 03' 06.44" W
		14a.3	47° 50' 11.33" N	44° 03' 34.49" W
		14a.4	47° 50' 10.86" N	43° 58' 28.99" W
		14a.5	47° 47' 54.35" N	43° 59' 23.39" W
		14a.6	47° 45' 55.19" N	43° 58' 08.94" W
		14a.7	47° 44' 44.59" N	44° 02' 41.50" W
14b	Eastern Flemish Cap	14b.1	47° 35' 21.77" N	43° 56' 50.10" W
		14b.2	47° 37' 33.53" N	43° 52' 56.50" W
		14b.3	47° 30' 04.79" N	43° 48' 18.54" W
		14b.4	47° 27' 34.88" N	43° 48' 18.54" W
		14b.5	47° 27' 34.88" N	43° 52' 00.34" W

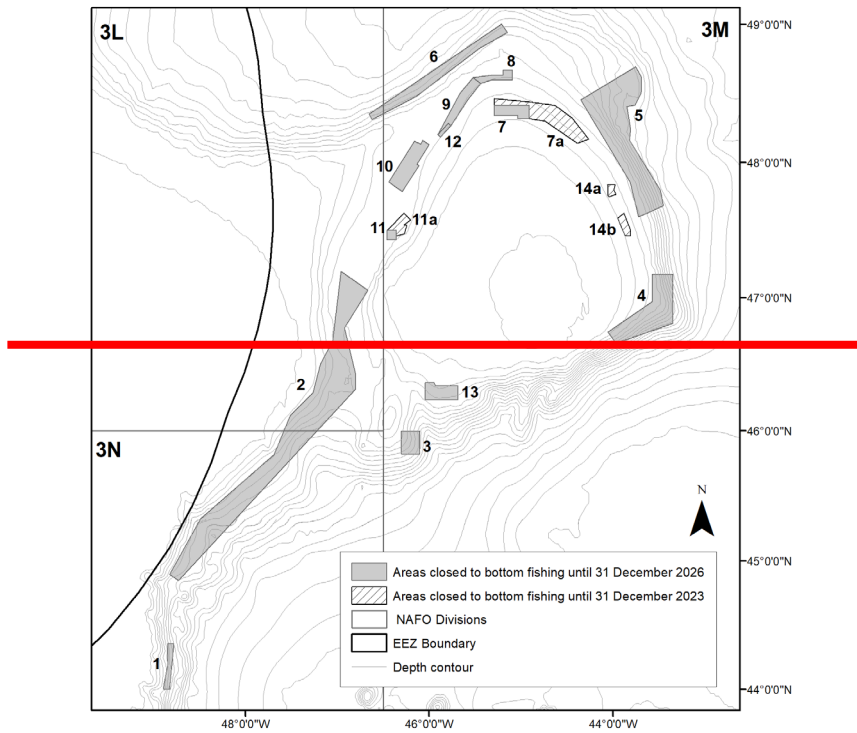
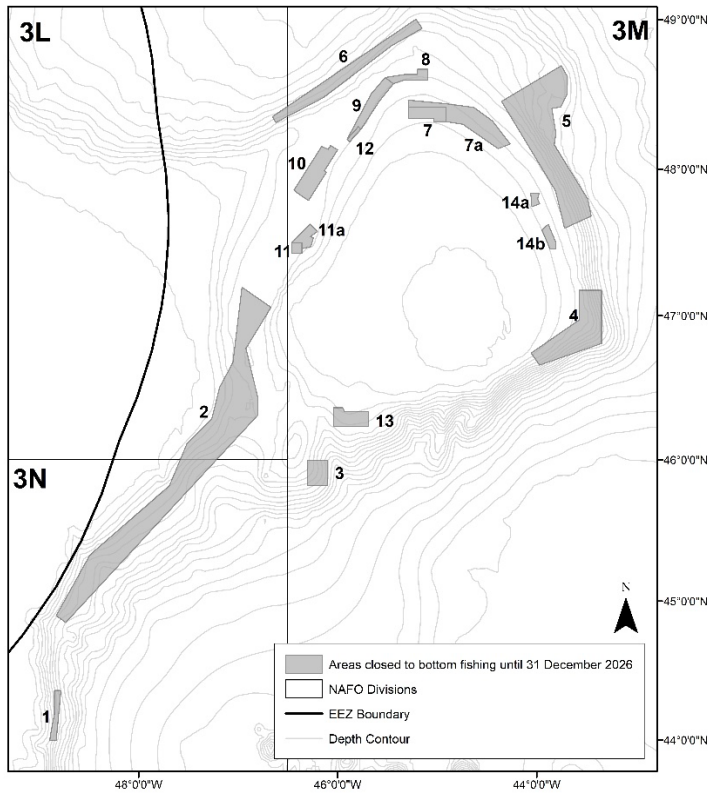


Figure 5. Polygons Delineating Vulnerable Marine Ecosystem Area Closures Referenced in Article 17.3 and [Article 17.3 bis](#).