



Northwest Atlantic Fisheries Organization

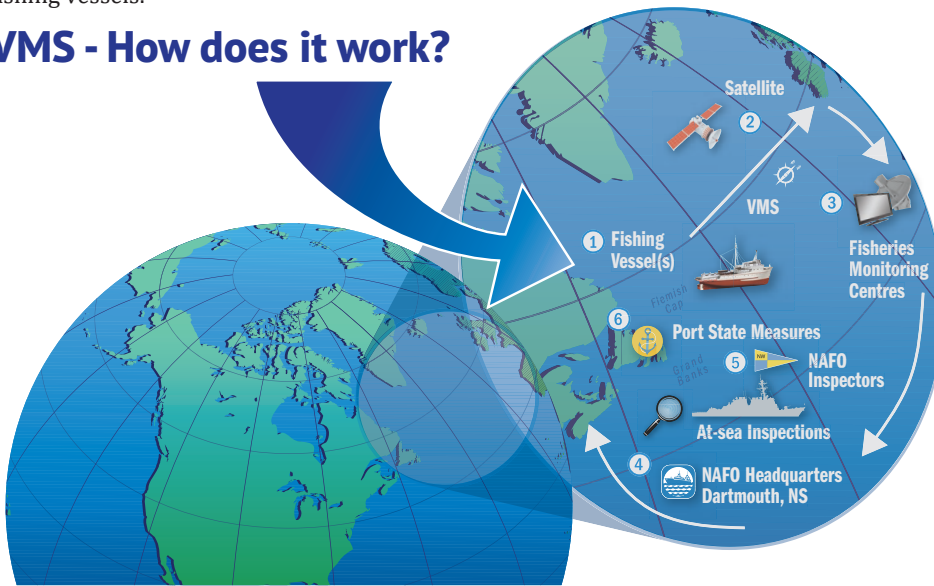
MCS Monitoring, Control & Surveillance



VMS - Vessel Monitoring System

The NAFO Vessel Monitoring System (VMS) is a satellite-based monitoring system that provides data every hour to the fisheries authorities on the location, course and speed of fishing vessels.

VMS - How does it work?



VTI - Vessel Transmitted Information

Uses the same technology and communication channel as VMS, but transmits other information, such as:

- Movement between Division boundaries
- Fish catch quantities on entry and exit
- Daily catches by species and Divisions
- Transshipment - transfer of cargo (fish products) at sea
- Port of landing



Fishing vessels

- Vessels are required to have onboard functional **VMS**
- Vessels report every hour their geographic position, speed, course, etc.
- Vessels transmit daily catch information directly to their national Fisheries Monitoring Centres (FMC)
- NAFO Contracting Parties have the responsibility to ensure that the information is transmitted to the Secretariat



Fisheries Monitoring Centres

These are the land-based national centres to which registered fishing vessels connect via satellites. The information received by the FMC is then forwarded to NAFO's Headquarters.



At-sea Inspections & NAFO Inspectors

The NAFO Joint Inspection and Surveillance Scheme is implemented to ensure compliance of NAFO-registered fishing vessels in the NAFO Regulatory Area (NRA). Inspectors are appointed by Contracting Parties and assigned to fishery patrol vessels tasked to carry out NAFO inspection duties.

The real-time access of inspectors to VMS information enables them to determine the exact location of fishing vessels thereby facilitating onboard inspections.



Vessel Monitoring System (VMS)

The VMS uses the Global Positioning System (GPS) to display the accurate geographic position of the vessel. The satellite monitoring device transmits the information from the vessel(s) to the Fisheries Monitoring Centres (FMCs) of each Contracting Party.



NAFO Headquarters

One of the NAFO Secretariat duties is to collect and maintain VMS data and forward it to the inspection services.

In addition to being an integral part of NAFO's MCS scheme, the VMS data is also used for scientific purposes, e.g. NAFO's Significant Adverse Impacts (SAIs) on Vulnerable Marine Ecosystems (VMEs), fish stock assessment.

The VMS may be used for Search and Rescue and maritime safety purposes.



Port State measures

The NAFO Measures on port State Control apply to landings or transshipments in ports of Contracting Parties by fishing vessels flying the flag of another Contracting Party. The provisions apply to landing or transshipment of fish caught in the NAFO Regulatory Area, or fish products originating from such fish, that have not been previously landed or offloaded at a port. These measures allow certain ports to be designated for landing or transshipping of catches made in the northwest Atlantic. Comprehensive port inspections take place with well-trained and up-to-date inspectors. Prior notifications allow ports to be prepared for the fishing vessels arrival in order to conduct the inspection in a timely manner.

