



Serial No. N6375

NAFO/FC Doc. 14/10
(Adopted)

36th ANNUAL MEETING – SEPTEMBER 2014

Proposal for a the Establishment of two Additional Area Closures to Protect VMEs in the NAFO Regulatory Area

Recalling commitments made under the United Nations General Assembly resolution 61/105 (and subsequent resolutions), to manage the impacts of bottom contact fishing on vulnerable marine ecosystems;

Acknowledging NAFO's commitment to an ecosystem approach to fisheries management;

Mindful of the advice of the Scientific Council from their June 2014 meeting, which noted that the area closures that NAFO has established over the past several years, are effective;

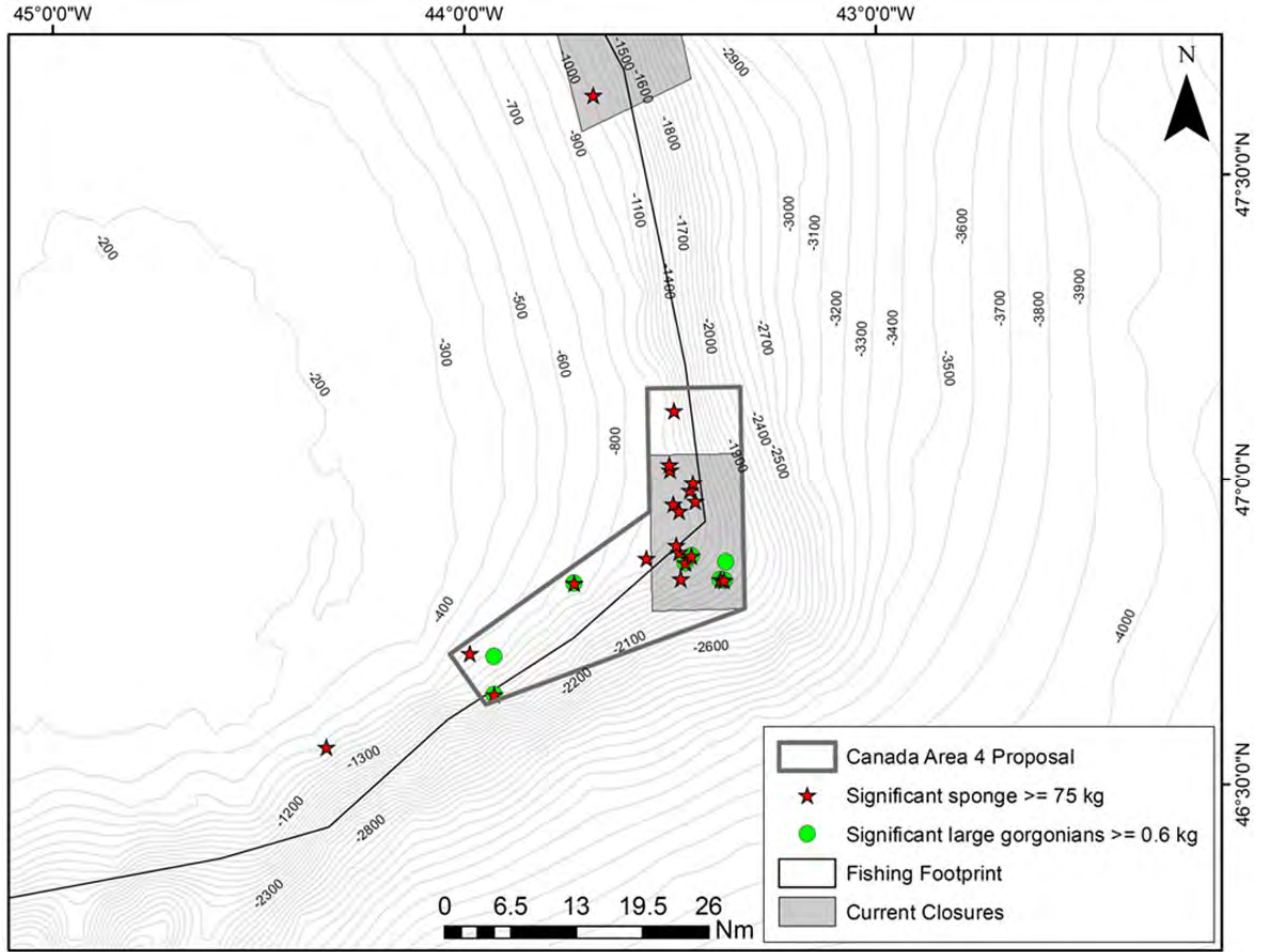
Considering the priority areas noted identified in 2014 Scientific Council advice (NAFO SCS Doc.14/17); and

Noting recommendation 6 of the Report of the Working Group of Fisheries Managers and Scientists on an Ecosystem Approach Framework to Fisheries Management, regarding significant concentrations of sponge and large gorgonians on the Southeastern Flemish Cap and large gorgonians on the Beothuk Knoll;

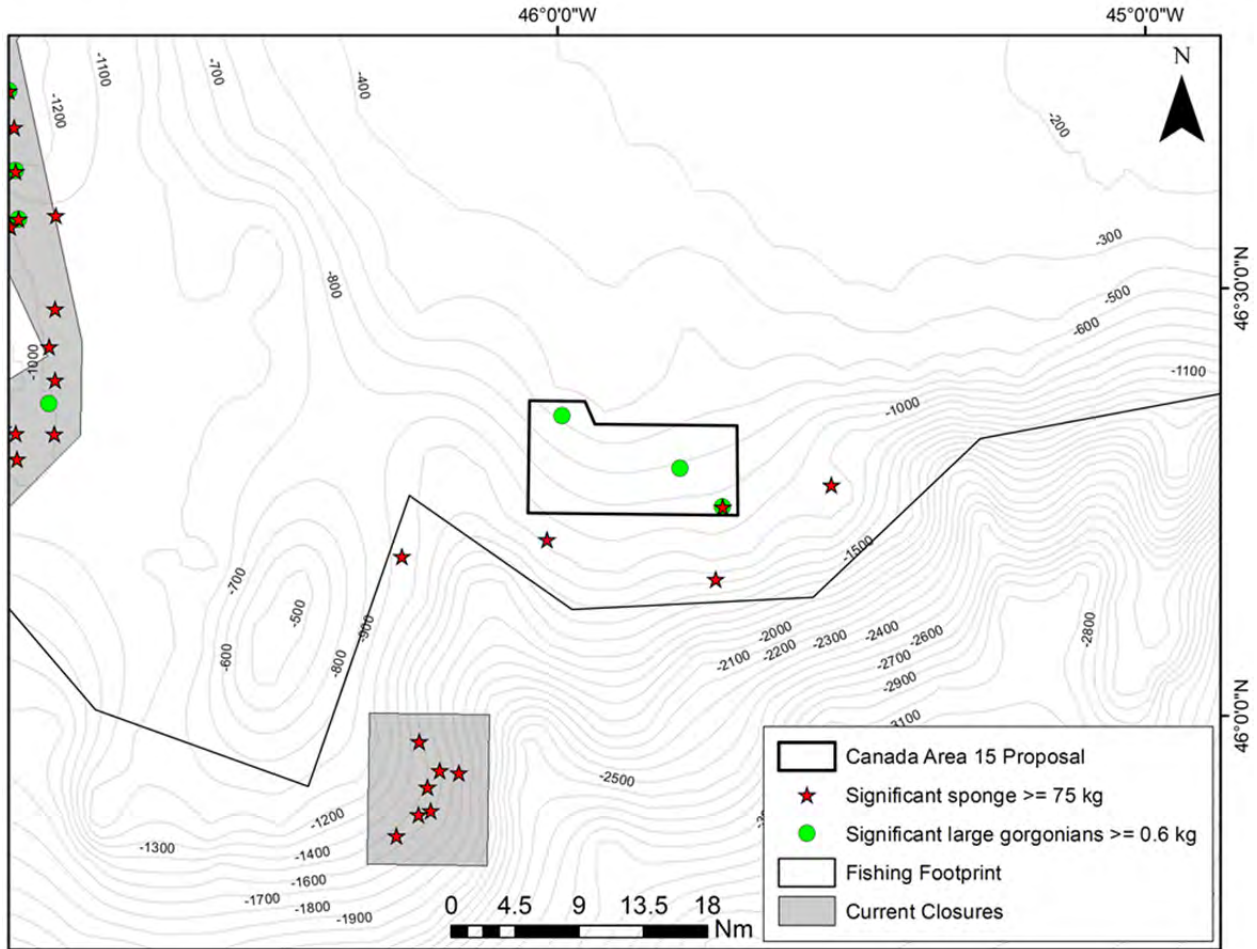
It is proposed that the Fisheries Commission:

- Adjust the current area closure 4 (outlined in Article 16 of the NCEMs), to capture additional significant concentrations of sponge and large gorgonian coral, as outlined in the map in Annex 1;
- Create a new area closure on the Beothuk Knoll to capture significant concentrations of large gorgonian corals, as outlined in the map in Annex 2; and,
- Adjust Article 16.5 of the NCEMs to include the coordinates of the adjustment to area 4 and the creation of a new area closure, as outlined in Annex 3.

Annex 1



Annex 2



Annex 3

Area 4 Point No.	Latitude	Longitude
4.1	46° 44' 34.80" N	44° 03' 14.40" W
4.2	46° 58' 19.20" N	43° 34' 16.32" W
4.3	47° 10' 30.00" N	43° 34' 16.32" W
4.4	47° 10' 30.00" N	43° 20' 51.72" W
4.5	46° 48' 35.28" N	43° 20' 51.72" W
4.6	46° 39' 36.00" N	43° 58' 8.40" W

New Area (15) Point No.	Latitude	Longitude
15.1	46° 13' 58.80" N	45° 41' 13.20" W
15.2	46° 13' 58.80" N	46° 02' 24.00" W
15.3	46° 21' 50.40" N	46° 02' 24.00" W
15.4	46° 21' 50.40" N	45° 56' 48.12" W
15.5	46° 20' 14.32" N	45° 55' 43.93" W
15.6	46° 20' 14.32" N	45° 41' 13.20" W