

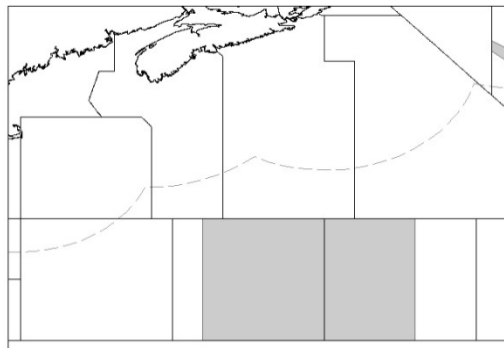


Serial No. N6391

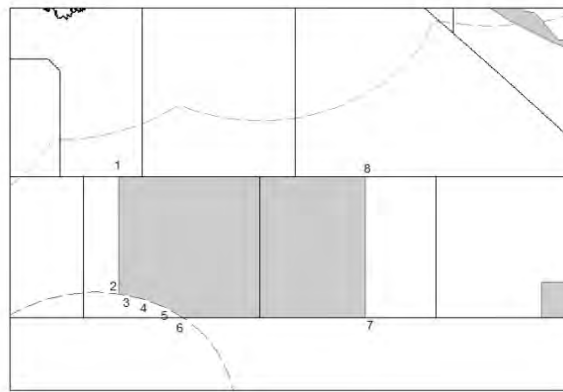
NAFO/FC Doc. 14/25
(Adopted)36TH ANNUAL MEETING - SEPTEMBER 2014**Amendment of New England Seamounts closure defined in Article 16.1**

Revised map and new coordinates of New England Seamounts in consideration of Recommendation 3 in FC Working Paper 14/06 which states: “**Co-ordinates of the New England seamount closure defined in Article 16.1 shall be amended so that the closure is restricted to areas within the NAFO RA.**”

Old Map of New England Seamounts closure:



Revised Map of New England Seamounts closure (*following the boundary of the Bermudan EEZ through points 2-6*):



New coordinates:

Point No.	Latitude	Longitude
1	39°00'00 N	64°00'00 W
2	35°40'19 N	64°00'00 W
3	35°40'08 N	63°57'22 W
4	35°30'43 N	63°16'19 W
5	35°15'29 N	62°37'55 W
6	35°00'00 N	62°14'24 W
7	35°00'00 N	57°00'00 W
8	39°00'00 N	57°00'00 W