



Serial No. N6623

NAFO/FC Doc. 16/12

[Adopted]

### **38<sup>th</sup> ANNUAL MEETING – SEPTEMBER 2016**

#### **Establishment of an Additional Area Closure to Protect VMEs in the NAFO Regulatory Area**

**Recalling** commitments made under the United Nations General Assembly resolution 61/105 (and subsequent resolutions), to manage the impacts of bottom contact fishing on vulnerable marine ecosystems;

**Acknowledging** NAFO's commitment to an ecosystem approach to fisheries management;

**Mindful** of the advice of the Scientific Council Risk assessments for SAI on three VME indicator species in their June 2016 meeting (NAFO SCS Doc. 16-14 Rev.), which noted that both large gorgonians and sponges VME have a low overall risk of SAI, while sea pen VMEs were assessed as having a high overall risk of SAI;

**Considering** the priority areas noted identified in 2014 Scientific Council advice (NAFO SCS Doc. 14/17);

**Noting** recommendation 5 of the Report of the Working Group of Fisheries Managers and Scientists on an Ecosystem Approach Framework to Fisheries Management (WG-EAFFM)

*"Taking note of the recent SAI assessment from the SC, that FC consider management response, if appropriate, including the possible closure of the areas previously identified as sea pen candidate areas 13 and 14 (Eastern Flemish Cap) if proposals are made at the annual meeting...."*

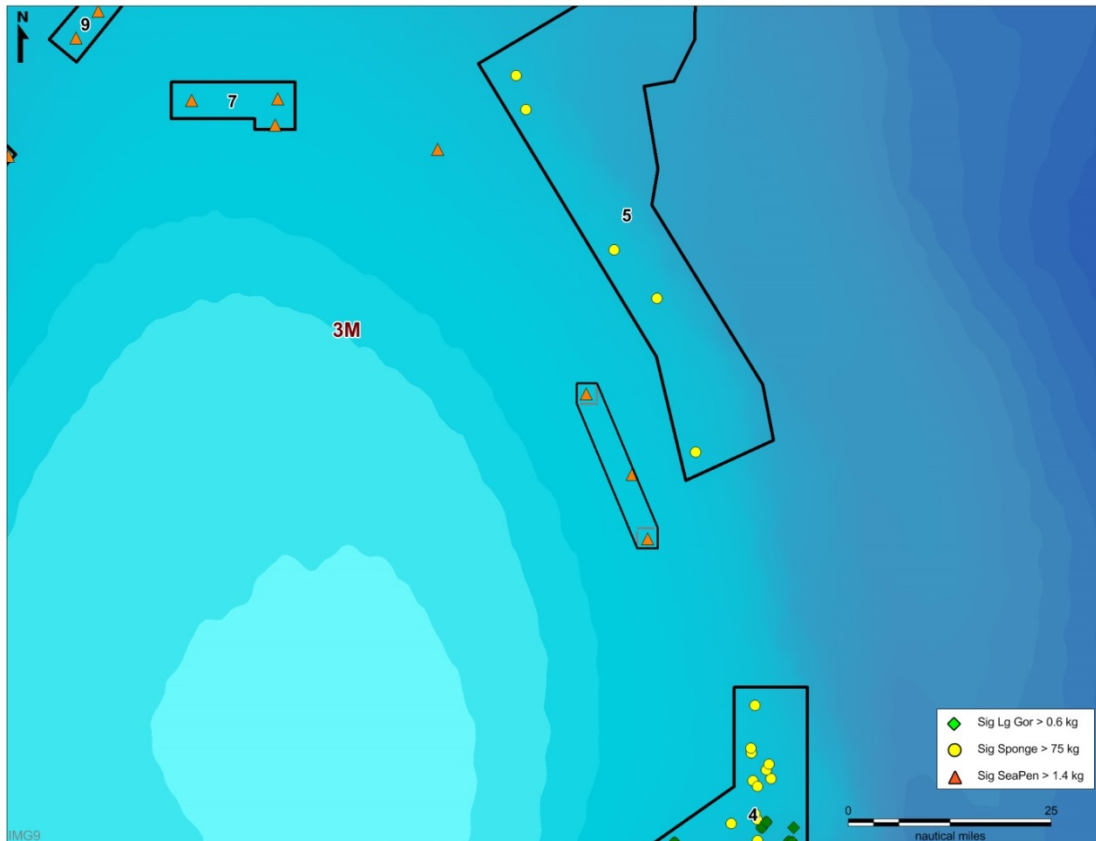
**Taking into account** the maps outlined in Annex 4 of the Report of the NAFO Joint Fisheries Commission–Scientific Council Working Group on Ecosystem Approach Framework to Fisheries Management (WG-EAFFM), which have been attached in Annex 1 of this document;



### It is proposed that the Fisheries Commission:

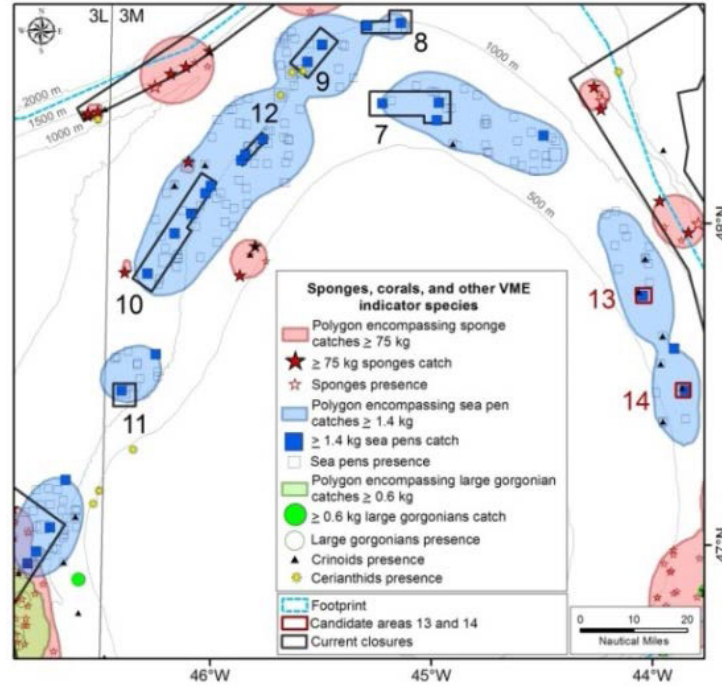
Create a new area closure on the Eastern Flemish Cap encompassing the areas previously identified as areas 13 and 14, to capture significant concentrations of sea pens, as outlined in the map and the coordinates below. This closure, new area 14, will remain in place until December 31, 2018, before which time it will be reviewed taking into account the latest SC advice, which should consider the NEREIDA research results on sea pen resilience.

#### Area 14

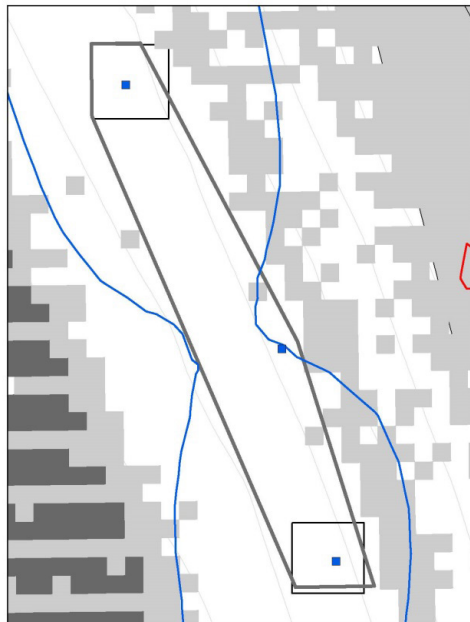


ID	Lat (Y)	Long (X)
1	47.798425	-44.051794
2	47.756789	-44.051794
3	47.459692	-43.866764
4	47.459692	-43.80515
5	47.501333	-43.80515
6	47.798425	-43.989833

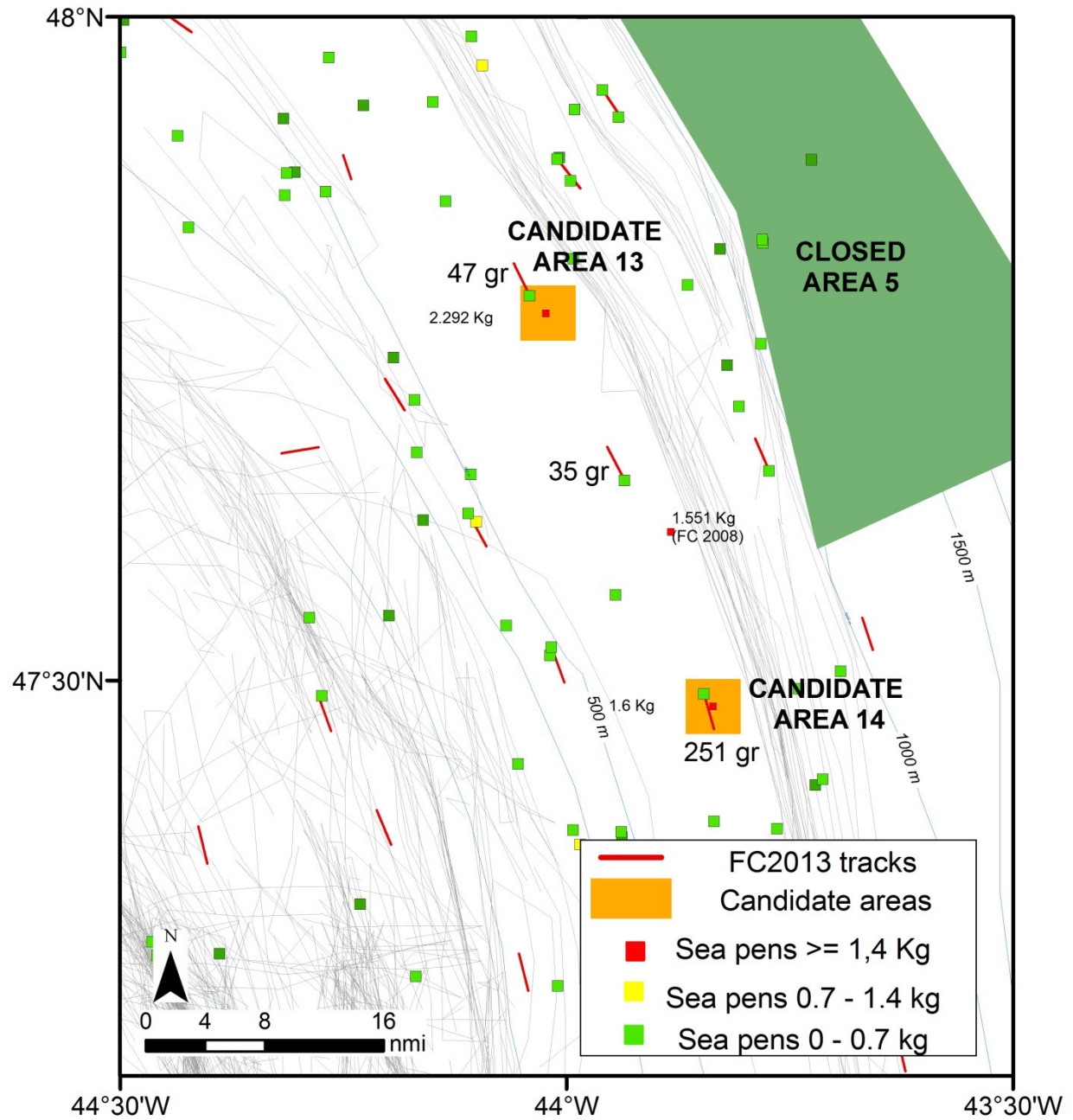
## Annex 1. Maps of Candidate Areas 13 and 14 referred to in Recommendation 5



**Figure 1.** Closed Areas 7 – 12 and Candidate Areas 13 and 14.



**Figure 2.** Candidate Areas 13 and 14 from 2003-2013 VMS data.



**Figure 3.** Candidate Areas 13 and 14.