



ANNUAL MEETING - JUNE 1958

United Kingdom Research Report, 1957

by C. E. Lucas and R. S. Wimpenny

Commercial Fishing

Effort and landings in 1957 (see Sampling Yearbook Vol. 2, 1957) increased materially compared with 1956 figures. In all 41 trips were made from Subarea 1 totalling 7,297.65 metric tons of all species (6,948.43 metric tons of cod).

From Subarea 3, 4 trips were made totalling 1,268.62 metric tons of all species (708.95 metric tons of cod).

Market Sampling 1)

Cod measured from Subarea 1 totalled 4,830 and Figure 1 gives the length distribution, as percentages, of raised numbers.

No measurements were obtained from Subarea 3, nor were age determinations made on material from either area.

Sampling at Sea 1)

During October 1957 an observer on a commercial trawler studied the size range of codling and percentage of catch rejected at sea. Some 86% of those codling rejected at sea were of the 40-49 length group and those rejected represented 5.4% of the total catch by weight.

Comparative Fishing

Although no comparative fishing experiments were conducted in the ICNAF area in 1957, much of the work carried out in the ICES area provided data of direct relevance to the Commission's scientific programme. Results from experiments on the selectivity of trawls and on the subject of effort measurement were presented at the joint ICNAF, ICES, FAO meeting in Lisbon in May-June 1957.

- 1) The data in tabular form will be given in the "1957 Sampling Yearbook".

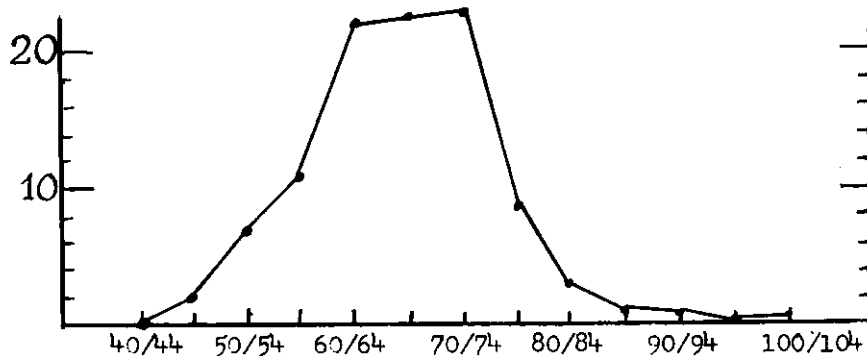


Figure 1. Cod. Subdivision 1F. Percentage length composition of U.K. landings based on 4,830 measurements, raised to numbers landed.