

Northwest Atlantic



Fisheries Organization

Serial No. N454

NAFO SCR Doc. 81/XI/149

SPECIAL MEETING OF SCIENTIFIC COUNCIL - NOVEMBER 1981

Report on harp seal recoveries in Greenland, 1980-81

by

Finn Larsen
Grønlands Fiskeriundersøgelser
Copenhagen, Denmark

Within the last year a total of 72 harp seals tagged and/or branded at Newfoundland were recovered in Greenland. Three seals were recaptured in East Greenland (Angmagssalik), and 69 along the west coast of Greenland. Altogether nine harp seals have been recovered in East Greenland since 1977.

Tables 1-3 show the number by month and district of harp seals recaptured within 12 months from tagging (Table 1), between 12 and 24 months after tagging (Table 2), and more than 24 months after tagging (Table 3). Furthermore, the recoveries are separated into seals tagged in the period 1949-1977 and in 1978-1980. The total number of tagged and/or branded harp seals recovered in Greenland now amounts to 450.

Although the 72 new recaptures constitute a significant addition to the material, they do not alter the general pattern of seasonal and regional distribution of recoveries described in previous papers (Larsen and Kapel, 1979; Larsen and Kapel, 1980), but support the evidence of minor changes in the distribution since earlier tagging experiments. They also support the indication in one of the previous papers (Larsen and Kapel, 1979), that animals more than 12 months old appears earlier and also move farther north (Thule and Upernavik districts) than young of the year (Figs 1 and 2). It should be noted, however, that the three new recoveries from East Greenland are all captured 2-3 months later than the previous ones.

Most of the new recoveries come from the large scale tagging experiment in 1978, relatively fewer from the 1979 and 1980 taggings, and few from earlier years.

All 450 recoveries are now available for computer analysis on magnetic tape, as will be future recoveries. This is expected to allow for more refined analyses of the patterns of distribution as well as of other parameters.

References

Larsen, F. and Kapel, F.O. 1979. Seasonal and regional distribution of tagged harp seals recaptured in Greenland, NAFO/SCR Doc. 79/XI/13.

Larsen, F. and Kapel, F.O. 1980. Report on harp seal recoveries in Greenland, 1979-80. NAFO/SCR Doc. 80/XI/171.

Table 1. Harp seals tagged at Newfoundland 1949-80, recaptured in Greenland within 12 months.

Month		V	VI	VII	VIII	IX	X	XI	XII	I	II	III	IV
Thule	1949-77	-	-	-	-	-	-	-	-	-	-	-	-
	78-80	-	-	-	-	-	-	-	-	-	-	-	-
Upernavik	1949-77	-	-	4	7	2	2	1	-	-	-	-	-
	78-80	-	-	2	1	3	2	-	-	-	-	-	-
Umanak	1949-77	-	-	2	16	8	1	2	-	-	-	-	-
	78-80	-	-	2	22	6	1	-	-	-	-	-	-
Jakobshavn	1949-77	-	-	1	10	11	10	-	-	1	-	-	-
	78-80	-	1	-	3	6	1	-	-	1	1	-	-
Egedesminde - Godhavn	1949-77	-	1	6	2	3	1	-	-	4	-	-	-
	78-80	-	-	4	2	3	5	3	6	3	7	1	-
Holsteinsborg - Godthåb	1949-77	-	-	-	1	-	-	1	4	2	1	2	-
	78-80	-	3	3	1	-	-	1	1	-	3	2	-
Frederikshåb	1949-77	1	2	-	-	-	-	-	-	-	-	-	-
	78-80	-	3	1	-	-	-	-	-	-	-	-	-
Julianehåb - Narssaq	1949-77	1	3	1	-	-	-	-	-	-	-	-	-
	78-80	1	4	1	1	-	-	-	-	-	-	1	-
Nanortalik	1949-77	-	1	1	-	-	-	-	-	-	-	-	-
	78-80	2	2	4	1	-	-	-	-	-	-	-	-
Angmagssalik - Scoresbysund	1949-77	-	-	-	-	-	-	-	-	-	-	-	-
	78-80	-	-	1	2	-	1	-	-	-	-	-	-

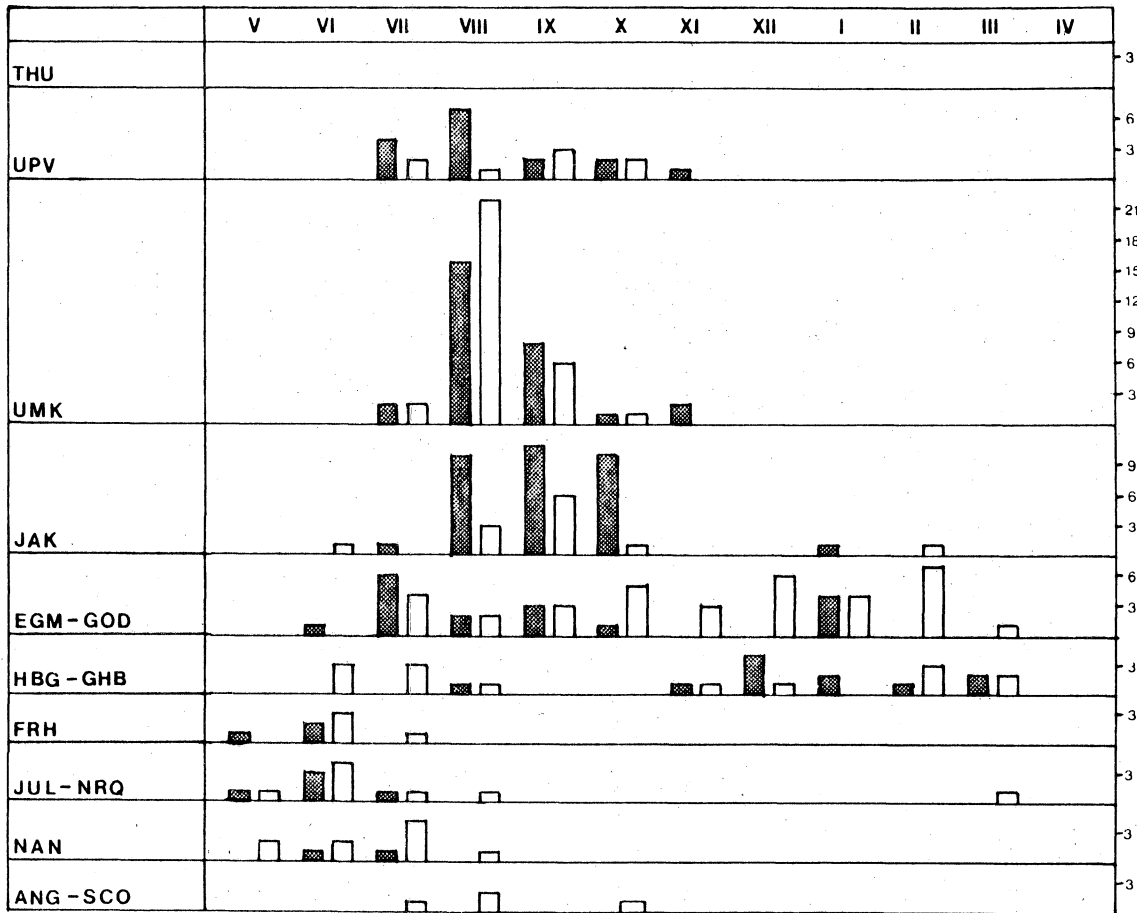


Figure 1. Regional and seasonal distribution of harp seals tagged at Newfoundland 1949-80 and recaptured in Greenland within 12 months. Shaded columns animals tagged 1949-77, open columns animals tagged 1978-80.

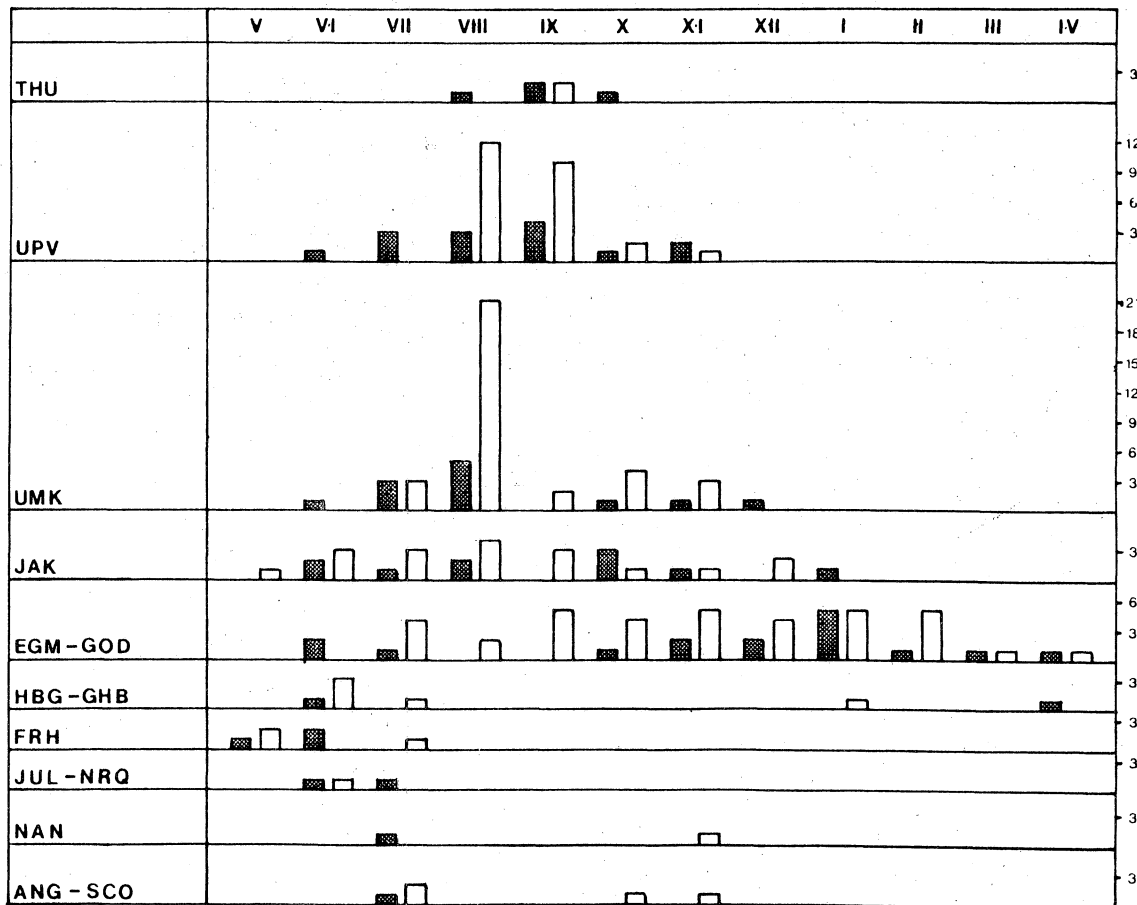


Figure 2. Regional and seasonal distribution of harp seals tagged at Newfoundland 1949-80 and recaptured in Greenland after 12 months. Shaded columns animals tagged 1949-77, open columns animals tagged 1978-80.