

Northwest Atlantic



Fisheries Organization

Serial No. N2614

NAFO SCR Doc. 95/92

SCIENTIFIC COUNCIL MEETING - SEPTEMBER 1995
Symposium - The Role of Marine Mammals in the Ecosystem

Seasonal Variation in Body Condition of Adult Barents Sea
Harp Seals (*Phoca groenlandica*)

by

K. T. Nilssen¹, P. E. Grotnes², T. Haug¹, and V. Potelov³

¹Norwegian Institute of Fisheries and Aquaculture
P. O. Box N-9002 Tromsø, Norway

²Norwegian College of Fisheries Science
University of Tromsø, N-9037 Tromsø, Norway

³Polar Research Institute of Marine Fisheries and Oceanography (PINRO)
6 Knipovich Street, 183763, Murmansk, Russia

Abstract

In the period 1990-1994, harp seals (*Phoca groenlandica*) were sampled for ecological studies in various areas and seasons in the Barents Sea. Data on total body weight, standard body length, axillary girth, dorsal and ventral blubber thickness were selected from all seals with standard body length 150 cm or more in order to evaluate the seasonal dynamics in body condition of the animals. Blubber thickness measurements and a condition index showed the same seasonal patterns. The seals were in poor condition in spring and early summer (May-June), condition improved during the course of summer, and the animals were in good condition in September and in October when the mean dorsal blubber thickness was approximately 88 mm. The energy stores built up during the summer and autumn were maintained until February, whereafter the seals became thinner as the stores of blubber decreased rapidly during the breeding season (late February-March). A slight, but not significant increase in dorsal blubber thickness was observed in the short period between lactation and moult (late March-early April), but the stores of blubber decreased further during moult (late April-May) to a mean dorsal blubber thickness of less than 20 mm in mid-June. No significant differences were observed in blubber thickness or condition indices between the sexes in the various periods, except during April where the females were in significantly poorer condition than the males. Harp seals sampled during the seal invasions to North Norwegian coastal waters in February 1988 were in poorer condition than seals captured in the Barents Sea in February 1993.

Introduction

In phocid seals and cetaceans, the subdermal fat tissue, the blubber layer, is important for thermal insulation, serves as buoyancy and to streamline the body, and also serves as an energy source (Scholander *et al.*, 1950; Pond, 1978; Worthy and Lavigne, 1987; Ryg *et al.*, 1988). The relative amount of fat stored in the blubber layer and in the core of the animals (muscle, skeleton and viscera) varies between marine mammal species (Worthy and Lavigne, 1987). The energy reserves also vary in conjunction with the reproductive cycle, migrations and food availability (Sergeant, 1973; 1991; Pitcher, 1986; Fedak and Andersen, 1987; Ryg *et al.*, 1990). In marine mammals the level of fat reserves, which is mainly the blubber layer, has been considered the best indication of body condition and energetic status (Lockyer, 1986; Read, 1990; Ryg *et al.*, 1990).

In harp seals (*Phoca groenlandica*), most studies of body condition have been carried out during the reproduction period (Worthy and Lavigne, 1983a; b; 1987; Stewart and Lavigne, 1984; Worthy, 1987; Kovacs *et al.*, 1991), although some studies have been

carried out in the Northwest Atlantic in other periods (Sergeant, 1973; 1991; Beck *et al.*, 1993; Chabot *et al.*, MS 1995) and on captive animals (Renouf *et al.*, 1993). In the Barents Sea area earlier studies of harp seal condition have been carried out only during spring, including both breeding, between breeding and moult, and moult (Sivertsen, 1941).

In 1978 the Barents Sea harp seal stock was estimated to comprise approximately 800000 animals and increasing, with 170000 pups being born annually (Benjaminsen, 1979). During the 1980s, however, some decrease in rates of recruitment to the stock may have occurred (Anon., MS 1992; MS 1994; Kjellqwist *et al.*, 1995). Nevertheless, the harp seal is the most abundant seal species and an important predator in the Barents Sea. The species is now included in a multispecies model (MULTSPEC), which may provide the basis for future management of marine resources in the Barents Sea (Bogstad *et al.*, MS 1995). The annual migration pattern of Barents Sea harp seals is usually characterized by a north-bound feeding migration in spring and summer and a south-bound breeding migration during winter (Haug *et al.*, 1994). Summer and autumn, and probably also early winter seem to be the most intensive feeding periods for this population (Lydersen *et al.*, 1991; Nilssen *et al.*, MS 1994; 1995a; in press).

Data describing the variations in condition of the harp seals through the year are necessary prerequisites when the annual consumption of various prey species by the seal stock is to be estimated. In the period 1990-1994, harp seals were sampled for ecological studies in various areas and seasons in the Barents Sea (Nilssen *et al.*, MS 1994; 1995a; in press). Data from all seals with standard body length 150 cm or more were selected for evaluations of seasonal variation in body condition. At this body size most seals will probably have attained sexual maturity (Kjellqwist *et al.*, 1995). Blubber thickness measurements of these animals was also compared to that of harp seals sampled during the seal invasions to North Norwegian coastal waters in 1988 (Haug *et al.*, 1991; Nilssen *et al.*, 1992).

Materials and methods

Sampling areas and periods

Data were obtained from harp seals taken as by-catches in gill net cod-fisheries at the coast of North Norway in February and June 1988 (Table 1; Fig. 1).

In winter and spring, data were collected in the southern parts of the Barents Sea, in the White Sea and at the northeastern coast of North Norway. A survey designed to collect biological material from harp seals in the areas between Cape Kanin and Novaya Zemlya was conducted in February 1993 (Nilssen *et al.*, MS 1994). Between breeding and moult, in the last week of March and the first week of April, in 1992, harp seals were either shot or collected from by-catches in gill net cod-fisheries in Varangerfjord, North Norway (Nilssen *et al.*, 1995a). In the moulting period, data were collected from seals taken during Norwegian commercial sealing in the southern parts of the Barents Sea (the "East Ice") in April 1992 (Nilssen *et al.*, 1995a), and from seals taken during Russian scientific sealing in the White Sea in May 1994 (Table 1; Fig. 1).

During the summer period, a harp seal survey was carried out along the edge of the drifting pack-ice between Novaya Zemlya and Hopen in June 1991, and seals were sampled southeast of Hopen (Table 1; Fig. 1). Some of these seals were in their latest stages of moult as late as mid-June (Nilssen *et al.*, in press).

During autumn, surveys were conducted in the harp seal feeding areas in the northernmost parts of the Barents Sea in September 1990 and 1991, and in October 1992 (Nilssen *et al.*, in press) (Table 1; Fig. 1).

Condition measurements

Seals were weighed to the nearest kg in all sampling periods except in June 1988 and in May 1994 where no body weights were obtained (Table 1). No corrections were made for the weight of stomach contents or foetus, or for the weight of lost blood following the killing by shooting and subsequent bleeding of the seals.

Standard body length of all seals were measured to the nearest cm in a straight line from the tip of snout to the tip of tail, with the animal lying on its back. Axillary girth was measured to the nearest cm. Ventral blubber thickness between the front flippers (in a knife-cut on the sternum) and dorsal blubber thickness (in a knife-cut at the mid-line between the front flippers) were measured (excluding the thickness of the skin) to the nearest mm.

During the commercial sealing in the East Ice in April 1992, all measurements were recorded after draining out the blood by first cutting ventrally along a mid-line from the lower jaw to behind the front flippers and then cutting over the bloodvessels to these flippers. The girth measurements may have been slightly biased due to this operation.

During these commercial catch samplings, and also during the research cruise in June 1991, dorsal blubber thickness was measured after animals were skinned, in a knife-cut through the blubber layer against the inside of the skin, which may have introduced errors in these measurements compared with other periods.

Data analyses

Dorsal blubber thickness was tested for possible differences between the sexes within all periods in 1990-1994. The mean dorsal and ventral blubber thicknesses were compared between different seasons for all seals collected in the period 1990-1994. Blubber thickness data from the seals taken in February and June 1988 were compared with similar data from animals collected in February 1993 and June 1991.

A condition index (C) expressed as $C = \sqrt{L/W} * d$, where L is standard body length in cm, W is total body mass in kg and d is dorsal blubber thickness in cm (Ryg *et al.*, 1990), was used to evaluate the seasonal variation in the condition of the animals. In order to calculate condition for the animals in the May 1994 sample (Table 1), where total body weights were lacking, the correlation between a volume index and body weight was calculated on the basis of data from April 1992 and June 1991. Data from these periods were chosen because the condition of the seals were supposed to be most equal to the condition of animals taken in May 1994. The measurements from May 1994 were used to calculate the volume index (V), expressed as $V = (L^2 * G)/100\ 000$, where L is as above and G is the girth measured in cm right behind the front flippers (axillary girth). The regression between the volume index (V) and the body weight (W) in the April 1992 and June 1991 materials was:

$$W = 4.5 + 3.0 * V$$

The body weight was significantly ($p < 0.001$) correlated to the volume index (Fig. 2).

The condition index (C) was tested for possible differences between the sexes for all periods.

The correlation between the condition index (C) and two other common used body condition indices were tested. These indices were, respectively, $G*100/L$ (previously used for harp seals, see Smirnov, 1924) and $K=W/L^3$ (commonly used in fish studies, see Le Cren, 1951). Also possible relationship between blubber thickness and standard body length was tested.

The relationship between standard body length and total body weight was tested and compared between June 1991, when the animals were leanest, and October 1992, when the seals were observed to be fattest. Least squares linear regression analyses was used to find the relationship between various parameters. Various differences were tested using student's t-test. All tests and calculations were carried out in Quattro Pro (Borland and Osborne, 1990).

Results

Blubber thickness

No correlations were observed between dorsal or ventral blubber thickness and body

length in the seals in any of the sampling periods. No differences were observed in dorsal blubber thickness between the sexes in the different periods, except from April 1992 where females were significantly thinner ($t = 4.08$, $n = 259$, $p < 0.001$) than males.

The variation in dorsal and ventral blubber thickness (both sexes pooled, despite the observed difference in dorsal blubber thickness in April 1992) within the various seasons in the period 1990-1994 are shown in Fig. 3. The dorsal blubber vary more than the ventral blubber in thickness, however, with both parameters being lowest in spring and early summer, with mean values less than 20 mm in June 1991. The blubber increased during the course of summer, and the seals were very fat in September and October, with a mean dorsal blubber thickness of approximately 88 mm in October 1992. In this period maximal dorsal blubber thickness was 116 mm for a 14 years old male with standard body length 183 cm and weighing 189 kg. The energy stored as blubber during the summer and autumn was maintained until February, whereafter the seals became rapidly thinner during the breeding period (late February to mid-March). The blubber thickness seemed to be relatively constant in the period between lactation and moult, since no significant differences in blubber thickness were observed between March and April, but the stores of blubber decreased during moult (April-May) to the very low levels observed in June 1991.

Ventral mean blubber thickness were significantly lower ($t = 6.66$, $n = 84$, $p < 0.001$) in harp seals invading the North Norwegian coast in February 1988, compared with similar data from seals captured in the "East Ice" in February 1993 (Fig. 4). No significant differences in blubber thickness were observed, however, between seals taken during the invasions in June 1988 as compared with seals sampled in the Barents Sea in June 1991 (Fig. 5).

Condition indices

Correlating the $G \cdot 100/L$ (Smirnov, 1924) index with the condition index (C) in all sampling periods from 1990 to 1993 (Fig. 6) the following power regression equation was obtained:

$$C = -0.08 + 0.002 * (G \cdot 100/L)$$

The regression was significant ($p < 0.001$).

The regression analyses of the relationship between K, where $K = W \cdot 10^5 / L^3$ (Le Cren, 1951) and the condition index (C) in all samples in the period 1990-1993 (Fig. 7) was also significant ($p < 0.001$), yielding the power regression equation:

$$C = -0.02 + 0.033 * K$$

No significant differences in body condition were observed between sexes using the condition index (C) in the various periods in 1990-1994, except for April 1992, where the body condition of the females was significantly lower than for the males ($t = 3.58$, $n = 259$, $p < 0.001$).

The seasonal variation in the condition index (C) of the harp seals taken in the period 1990-1994 is shown in Fig. 8, where data from both sexes are pooled. In the spring period, March-June, the mean condition index was significantly lower ($p < 0.001$) than in the autumn and winter period (September-February). Within the spring season, all recorded indices were significantly different from the mean index for this period ($P < 0.001$), except for March 1992. During the autumn-winter season, however, none of the recorded indices differs significantly from the mean index for this period.

Seasonal increase in body mass

To evaluate the increase in body mass between the extremes in spring and fall, the relationship between length and weight was calculated for June 1991 and October 1992 (Fig. 9). In order to obtain comparable data, only animals longer than 157 cm were used in this calculation. The obtained power regression equations were:

June 1991: $\ln(W) = -6.24 + 2.08 * \ln(L)$

October 1992: $\ln(W) = -5.9 + 2.13 * \ln(L)$

No significant difference was found between June and October for the regression coefficients, which indicate that the increase in weight during the summer-autumn period were relatively similar for all animals longer than 157 cm.

Discussion

The observed correlation between the condition index (C) (Ryg *et al.*, 1990) and the two other body condition indices used in this study (Smirnov, 1924; Le Cren, 1951) suggests that all these can be used to evaluate variations in body condition of harp seals. It has been shown that the condition index (C) may vary with the body length of the seals (Chabot *et al.*, MS 1995). This may have biased the results to some extent, but the biases are assumed to be reduced due to the selection of seals with standard body length of 150 cm or more to be included in the study.

The analyses of body condition, using both condition indices and blubber thickness measurements, in this study suggest that Barents Sea harp seals are generally in poor condition in spring and early summer (May-June), condition improves during the course of summer, and seals are in good condition in September-October (Figs 3, 8). The energy stores built up during the summer and autumn are maintained until February, but then the seals become thinner as the stores of blubber decrease rapidly during the breeding period (late February - early March). There may be a slight, but not significant, increase in condition (Fig. 8) in the short period between lactation and moult (late March - early April), but the stores of blubber again decrease during moult, which occurs from late April to June (Figs 3, 8). The present spring observations confirm earlier studies of Barents Sea harp seal condition, which suggest that the adult females had a short feeding period between lactation and moult (March-April), due to observed increase in blubber thickness (Sivertsen, 1941).

The observed increase in condition between mid-June and September, and a further increase to October, indicate that summer and autumn must be very intensive feeding periods. The apparent stability in condition during late autumn and early winter suggests that the seals are able to consume sufficient prey to meet energy requirements during this period. The very poor condition observed in both sexes in March and June provide clear indications that feeding by the adult seals must be restricted during breeding and moult (Fig. 8).

The results in this study is consistent with observations made in Northwest Atlantic harp seals where the stores of blubber varied substantially throughout the year (Sergeant, 1973; 1991; Stewart and Lavigne, 1984; Kovacs *et al.*, 1991): Fatness increased in late winter, fell during whelping and again during moult, and the seals were still in very lean body condition during the summer. The animals increased in body condition during late summer and by December they were fat. Adult females showed a steady fatness from December to late February, while adult males appeared still to increase in condition until late February. The fall in condition of adult females during lactation, was followed by a short period of intensive feeding in early April before the loss in fatness due to the moult.

The increase in body condition during the course of summer seemed to be lower in harp seals in the Northwest Atlantic than in the Barents Sea. Observations in this study also suggest that adult Barents Sea harp seals reached their maximal condition level earlier in the autumn (probably in October) than in Northwest Atlantic (February) (Chabot *et al.*, MS 1995).

Seasonal variations in mass, blubber thickness, condition index and energy consumption have been observed in captive, both subadult and adult, harp seals, but with substantial variations among individual animals (Renouf *et al.*, 1992). Lager *et al.* (1994) also reported that food intake in captive subadult harp seals was generally low during moult (May-June), to be followed by a pronounced increase in feeding in the period July-October. During the period October-April the food intake of captive seals was observed to be relatively stable.

During the extensive harp seal invasions in 1986-1987 to the coast of North Norway the invading harp seals, particularly the subadults, were said to be thin and in poor condition (Wiig, 1988; Øritsland, 1990). Adult seals taken as bycatches in gill nets at the North Norwegian coast in February 1988 confirm this by having sacrificed parts of their storage blubber and being significantly thinner than animals taken in the southeastern Barents Sea in February 1993. By the end of the annual starvation period, however, no significant differences were observed in blubber thickness between adult seals taken in June 1988 at the coast of North Norway compared with seals taken southeast of Hopen in June 1991.

Acknowledgements

Thanks are due to the crews and field assistants on board the vessels *Johan Ruud*, *Polarfangst*, *Michael Sars*, *Selis*, *Meridian*, *Melshorn*, *Jan Mayen* and *Varzuga*. The following field assistants participated during the sampling in Varangerfjord and in the White Sea: A. Ørjebu, T.O. Rudi, S.A. Kjellqwist, G. Henriksen, Y. Nazarenko and V. Adrianov. Thanks are also due to D. Chabot and E.M. Nilssen for comments on the manuscript, and to B. Bergflødt, K.A. Fagerheim, N.E. Skavberg, F. Strand and L. Olsen for technical assistance. The ecological studies of harp seals were supported by funding from the Norwegian Council of Research, project no. 4001-701.260 and 108147/110.

References

- Anon. MS 1992. Report of the Joint ICES/NAFO Working Group on Harp and Hooded Seals, Copenhagen, 14-18 October 1991. *ICES CM 1992/Assessment 5*, 31 p.
- Anon. MS 1994. Report of the Joint ICES/NAFO Working Group on Harp and Hooded Seals, Copenhagen, 15-21 September 1993. *ICES CM 1994/Assessment 5*, 35 p.
- Beck, G.G., T.G. Smith and M.O. Hammill. 1993. Evaluation of body condition in the Northwest Atlantic harp seal (*Phoca groenlandica*). *Can. J. Fish. Aquat. Sci.* 50: 1372-1381.
- Benjaminsen, T. 1979. Pup production and sustainable yield of White Sea harp seals. *FiskDir. Skr., Ser. HavUnders.* 16: 551-559.
- Bogstad, B., K.H. Hauge and Ø. Ulltang. MS 1995. Results of simulation studies using a multispecies model for the Barents Sea (MULTSPEC). *Int. Whal. Commn SC/47/NA1*, 33 p.
- Borland and Osborne. 1990. Using Quattro Pro 2. Osborne McGraw-Hill, Berkeley, California, 916 p.
- Chabot, D., G.B. Stenson and N.B. Cadigan. MS 1995. Short- and long-term fluctuations in the size and condition of harp seal (*Phoca groenlandica*) in the Northwest Atlantic. NAFO SCR Doc. 95/42, Serial No. N2551, 27 p.
- Fedak, M.A. and S.S. Andersen. 1987. Estimating the energy requirements of seals from weight changes. In Marine mammal energetics, A.C. Huntley, D.P. Costa, G.A.J. Worthy and M.A. Castellini (eds), Society for Marine Mammalogy, Lawrence, KS. p. 206-226.
- Haug, T., A.B. Krøyer, K.T. Nilssen, K.I. Ugland and P.E. Aspholm. 1991. Harp seal (*Phoca groenlandica*) invasions in Norwegian coastal waters: age composition and feeding habits. *ICES J. mar. Sci.* 48: 363-371.
- Haug, T., K.T. Nilssen, N. Øien and V. Potelov. 1994. Seasonal distribution of harp seals (*Phoca groenlandica*) in the Barents Sea. *Polar Res.* 13(2): 163-172.
- Kjellqwist, S.A., T. Haug and T. Øritsland. 1995. Trends in age composition, growth and reproductive parameters of Barents Sea harp seals *Phoca groenlandica*. *ICES J. mar. Sci.* 52: 197-208.

- Kovacs, K.M., D.M. Lavigne and S. Innes. 1991. Mass transfer efficiency between harp seal (*Phoca groenlandica*) mothers and their pups during lactation. *J. Zool., Lond.* **223**: 213-221.
- Lager, A.R., E.S. Nordøy and A.S. Blix. 1994. Seasonal changes in food intake of harp seals (*Phoca groenlandica*) at 69°N. *Mar. Mamm. Sci.* **10**(3): 332-341.
- Le Cren, E.D. 1951. The length-weight relationship and seasonal cycle in gonad weight and condition in the perch (*Perca fluviatilis*). *J. Anim. Ecol.* **20**: 201-219.
- Lockyer, C. 1986. Body fat condition in northeast Atlantic fin whales, *Balaenoptera physalus*, and its relationship with reproduction and food resource. *Can. J. Fish. Aquat. Sci.* **43**: 142-147.
- Lydersen, C., L.A. Angantyr, Ø. Wiig and T. Øritsland. 1991. Feeding habits of northeast Atlantic harp seals *Phoca groenlandica* along the summer ice edge of the Barents Sea. *Can. J. Fish. Aquat. Sci.* **48**: 2180-2183.
- Nilssen, K.T., P. Grotnes and T. Haug. 1992. The effect of invading harp seals (*Phoca groenlandica*) on local coastal fish stocks in North Norway. *Fish. Res.* **13**: 25-37.
- Nilssen, K.T., I. Ahlquist, J-E. Eliassen, T. Haug and L. Lindblom. MS 1994. Studies of food availability and diets of harp seals (*Phoca groenlandica*) in the southeastern Barents Sea in February 1993. *ICES CM 1994/N:12*, 24 p.
- Nilssen, K.T., T. Haug, V. Potelov, V.A. Stasenkov and Y.K. Timoshenko. 1995a. Food habits of harp seals (*Phoca groenlandica*) during lactation and moult in March-May in the southern Barents Sea and White Sea. *ICES. J. mar. Sci.* **52**: 33-41.
- Nilssen, K.T., T. Haug, V. Potelov and Y.K. Timoshenko. In press. Feeding habits of harp seals (*Phoca groenlandica*) during early summer and autumn in the northern Barents Sea. *Polar Biol.*
- Øritsland, T. 1990. Seals in the northeast Atlantic and interactions with fisheries. *Comm. Arc. Int. Commnt.* **2**: 10-13.
- Pitcher, K.W. 1986. Variation in blubber thickness of harbour seals in southern Alaska. *J. Wildl. Manage.* **50**: 463-466.
- Pond, C.M. 1978. Morphological aspects and ecological and mechanical consequences of fat deposition in wild vertebrates. *Annu. Rev. Ecol. Syst.* **9**: 519-570.
- Read, A.J. 1990. Estimation of body condition in harbour porpoises, *Phocaena phocaena*. *Can. J. Zool.* **68**: 1962-1966.
- Renouf, D., R. Gales and E. Noseworthy. 1993. Seasonal variation in energy intake and condition of harp seals: Is there a harp seal morph? Problems for bioenergetic modelling. *J. Zool., Lond.* **230**: 513-528.
- Ryg, M., C. Lydersen, N.H. Markussen, T.G. Smith and N.A. Øritsland. 1990. Estimating the blubber content of phocid seals. *Can. J. Fish. Aquat. Sci.* **47**: 1223-1227.
- Ryg, M., T.G. Smith and N.A. Øritsland. 1988. Thermal significance of the topographical distribution of blubber in ringed seals (*Phoca hispida*). *Can. J. Fish. Aquat. Sci.* **45**: 985-992.
- Scholander, P.F., V. Walters, R. Hock and L. Irving. 1950. Body insulation of some arctic and tropical mammals and birds. *Bull. Mar. Biol. Lab. Woods Hole* **99**: 225-236.
- Sergeant, D.E. 1973. Feeding, growth and productivity of northwest Atlantic harp seals (*Pagophilus groenlandicus*). *J. Fish. Res. Board. Can.* **30**: 17-29.
- Sergeant, D.E. 1991. Harp seals, man and ice. *Can. Spec. Publ. Fish. Aquat. Sci.* **114**, 153 p.

- Sivertsen, E. 1941. On the biology of the harp seal *Phoca groenlandica* Erxl. Investigations carried out in the White Sea 1925-1937. *Hvalrddets Skr.*: 1-166.
- Smirnov, N. 1924. On the eastern harp seals *Phoca (pagophoca) groenlandica* var. *oceanica* Lepechin. *Tromsø Mus. Årsh.* 47(2): 1-11.
- Stewart, R.E.A. and D.M. Lavigne. 1984. Energy transfer and female condition in nursing harp seals *Phoca groenlandica*. *Holarct. Ecol.* 7: 182-194.
- Wiig, Ø. 1988. Grønlandssel og selinvasjon. Hva vet vi - hva tror vi. *Naturen* 1988(2): 35-41.
- Worthy, G.A.J. 1987. Metabolism and growth of young harp and grey seals. *Can. J. Zool.* 65: 1377-1382.
- Worthy, G.A.J. and D.M. Lavigne. 1983a. Energetics of fasting and subsequent growth in weaned harp seal pups, *Phoca groenlandica*. *Can. J. Zool.* 61: 447-456.
- Worthy, G.A.J. and D.M. Lavigne. 1983b. Changes in energy stores during postnatal development of harp seals, *Phoca groenlandica*. *J. Mammal.* 64: 89-96.
- Worthy, G.A.J. and D.M. Lavigne. 1987. Mass loss, metabolic rate, energy utilization by harp and grey seal pups during the postweaning fast. *Physiol. Zool.* 60: 352-364.

Table 1. Summary of the Barents Sea harp seals collected for studies of body condition in the period 1988-1994. CS = commercial sealing; SE = scientific expedition; GN = gill net by-catches. The numbers in parenthesis indicate the sampling areas shown in Fig. 1.

YEAR	SEASON	AREA	SAMPLING TYPE	NUMBER OF SEALS
1988	Feb/Jun	Coast of North Norway (8)	GN	14/60
1990	Sep	East of Svalbard (5)	SE	18
1991	Jun	East of Hopen (4)	SE	61
1991	Sep	East of Svalbard (6)	SE	23
1992	Mar-Apr	Varangerfjord (8)	SE/GN	28
1992	Apr	East Ice (2)	CS	232
1992	Oct	East of Svalbard (7)	SE	34
1993	Feb	Southeastern Barents Sea (3)	SE	24
1994	May	White Sea (1)	SE	42
Total				536

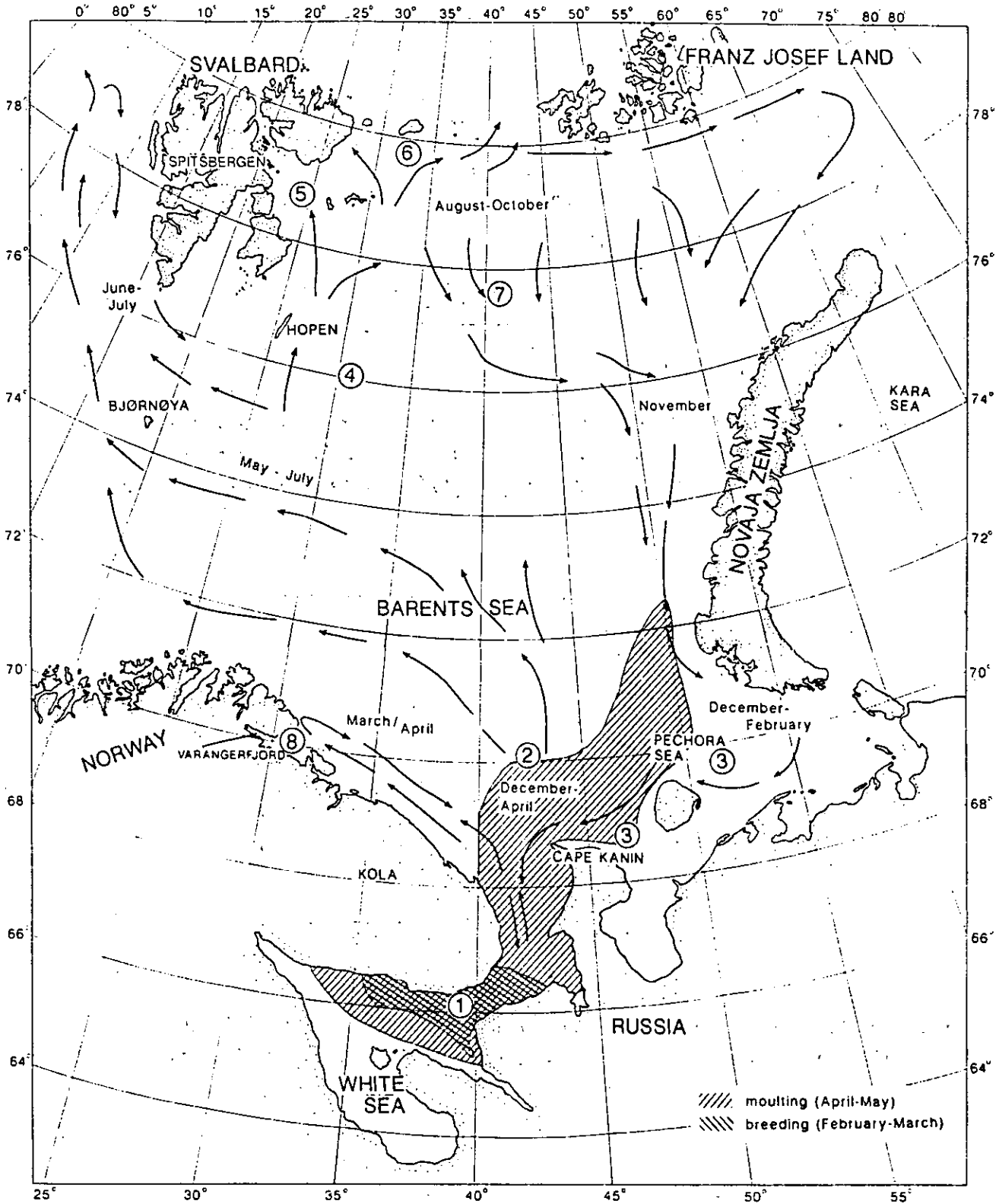


Fig. 1. Map showing the annual migration pattern of Barents Sea harp seals, including the sampling areas (in relation to Table 1) of harp seals in the period 1988-1994.

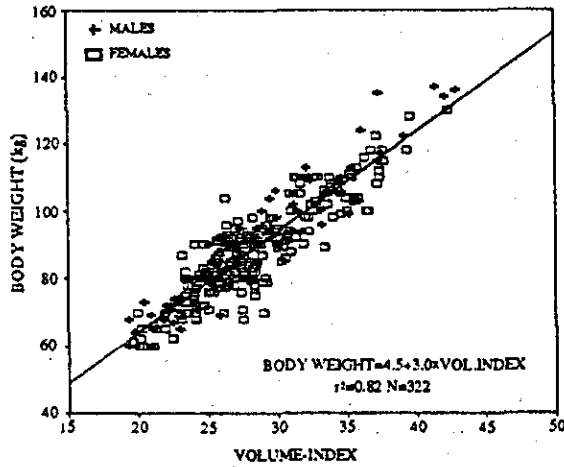


Fig. 2. Total body weight plotted against the volume-index (V) for adult harp seals collected in the "East Ice" area in April 1992 and southeast of Hopen in June 1991. $V = L^2 * G / 100000$, where L is standard body length (cm) and G is axillary girth (cm).

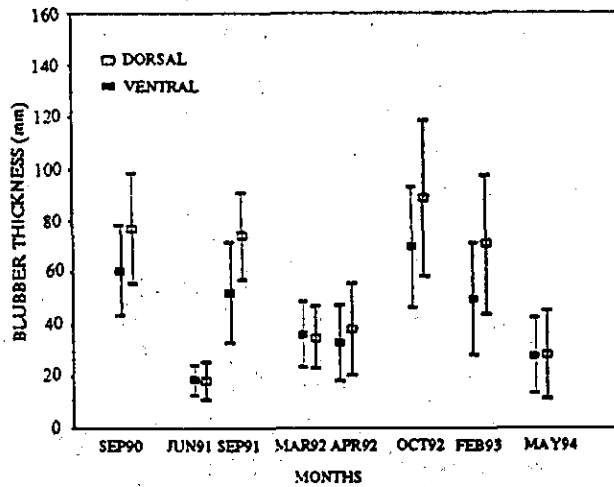


Fig. 3. Seasonal variation in ventral and dorsal blubber thickness (mean \pm 95 % CI) in adult harp seals (both sexes pooled) collected in the Barents and White Sea in 1990-1994.

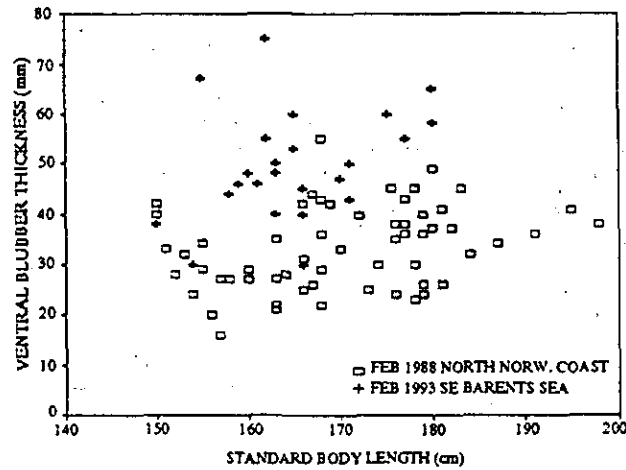


Fig. 4. Ventral blubber thickness plotted against standard body length for adult harp seals (both sexes pooled) collected in February 1988 at the coast of North Norway and in February 1993 in the southeastern Barents Sea.

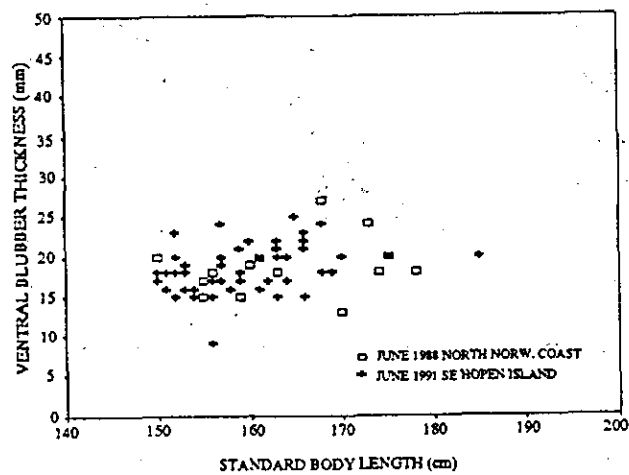


Fig. 5. Ventral blubber thickness plotted against standard body length for adult harp seals (both sexes pooled) collected in June 1988 at the coast of North Norway and in June 1991 southeast of Hopen.

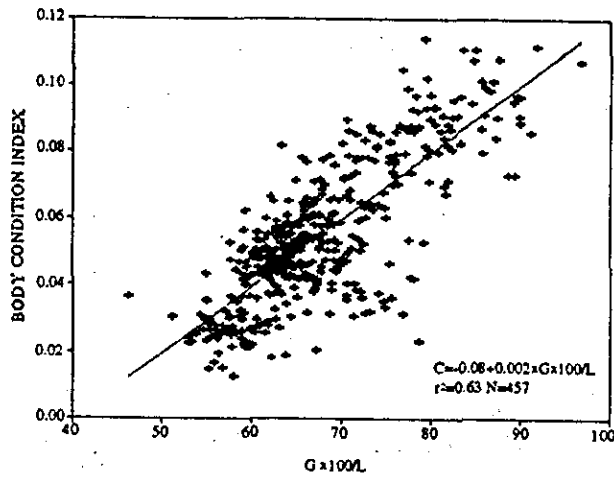


Fig. 6. The body condition index (C) (Ryg *et al.*, 1990) plotted against $G \times 100 / L$ (Smirnov, 1924) for all seals (both sexes pooled) sampled in the Barents Sea in the period 1990-1993. G is axillary girth in cm and L is standard body length in cm,

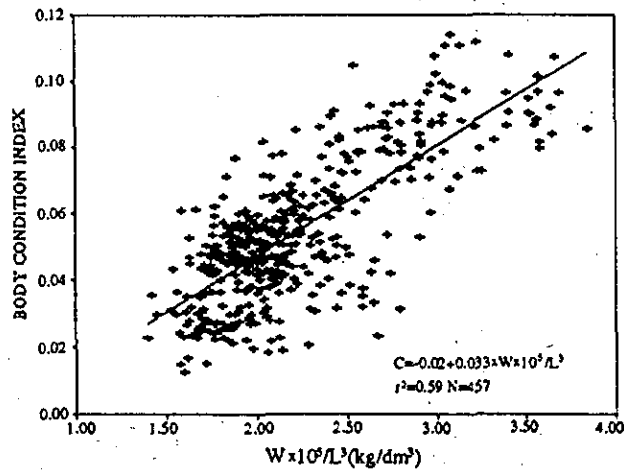


Fig. 7. The body condition index (C) (Ryg *et al.*, 1990) plotted against $W \times 10^5 / L^3$ (Le Cren, 1951) for all seals (both sexes pooled) sampled in the Barents Sea in the period 1990-1993. W is total body mass in kg and L is standard body length in cm.

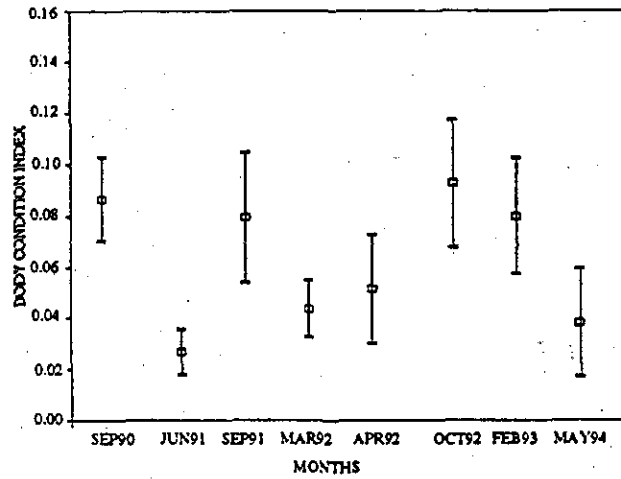


Fig. 8. Seasonal variation in the condition index (C) (Ryg *et al.*, 1990) (mean \pm 95 % CI) in adult harp seals (both sexes pooled) collected in the Barents and White Sea in 1990-1994.

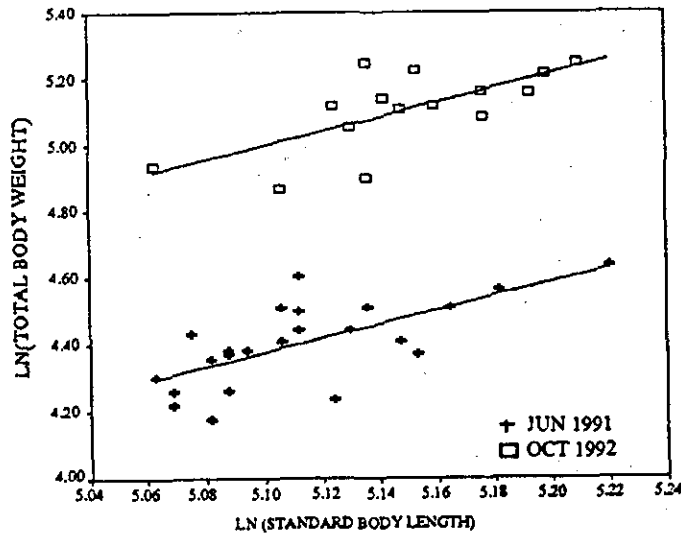


Fig. 9. Variation in total body weight (kg) in adult harp seals (157 cm and longer and both sexes pooled) between June 1991 and October 1992.