

Northwest Atlantic



Fisheries Organization

Serial No. N2781

NAFO SCR Doc. 96/98

SCIENTIFIC COUNCIL MEETING - SEPTEMBER 1996

Length distribution of northern shrimp (*Pandalus borealis*)
on Flemish Cap in July 1996 by strata and depth

by

A. Vasquez¹ and A. Nicolajsen²

¹ Instituto de Investigaciones Marinas, Eduardo Cabello 6
36208 Vigo, Spain

² Fiskirannsóknarstovan, Fisheries Laboratory, Noatun
FR-100 Torshavn, Faroe Islands

INTRODUCTION

No survey has been carried out that specifically tries to estimate the shrimp stock on Flemish Cap but EU (Spain) has conducted a random stratified bottom-trawl survey aimed at estimating demersal stocks in this area. In this survey shrimp was caught as by-catch and was weighted and samples taken for length measurements, see *e.g.* del Rio (1996). This paper presents the catch in number at length from this years survey.

MATERIAL AND METHODS

The material and method is described in del Rio (1996).

RESULTS

The results are shown in Fig. 1. Not surprisingly, small shrimp are shallower and large shrimp are in deeper waters, generally speaking.

REFERENCE

DEL RIO, J. L., 1996, Northern shrimp (*Pandalus borealis*) on Flemish Cap in July 1996. *NAFO SCR Doc. 96/94*. 10 pp.

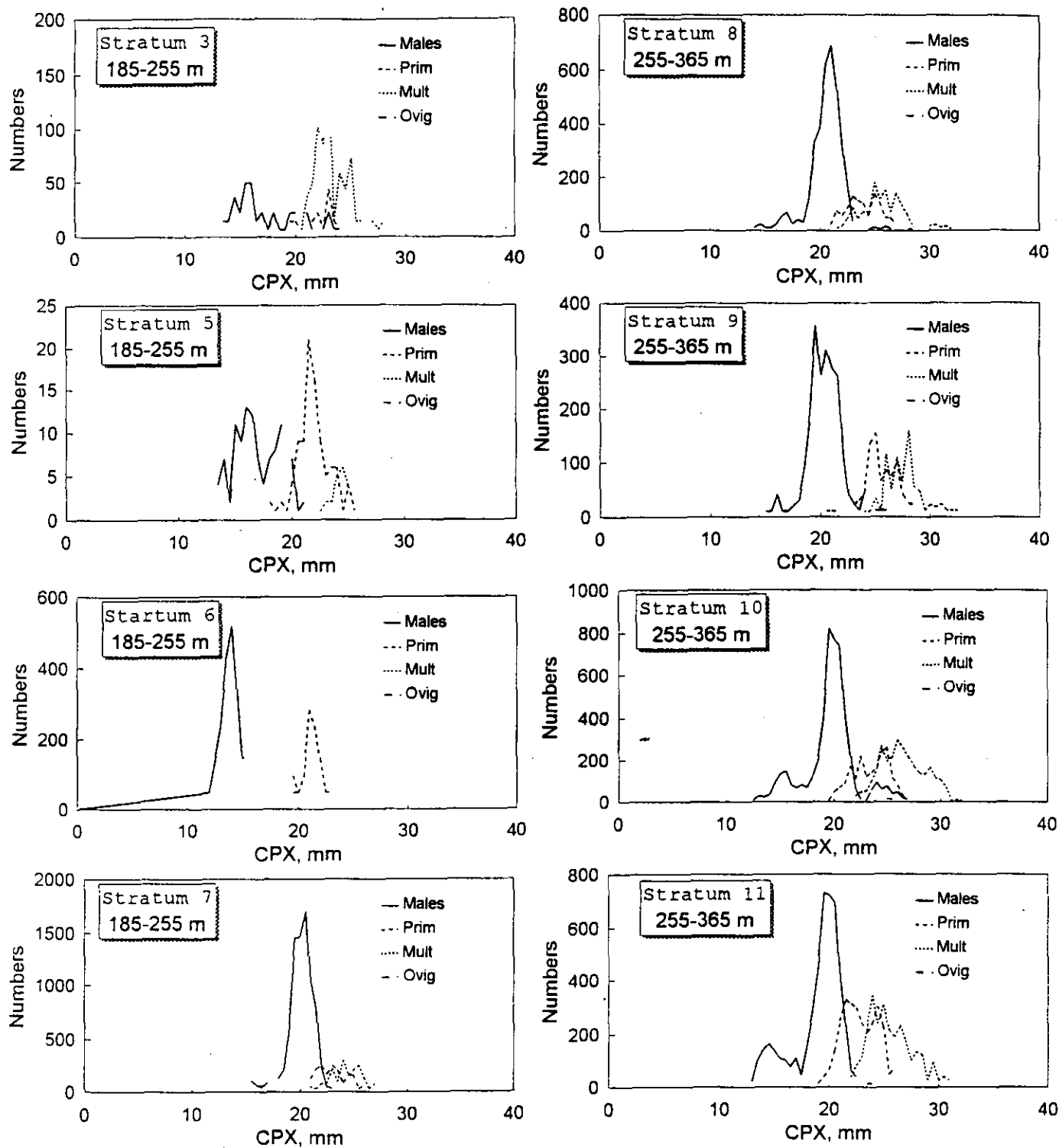


Figure 1 Length distribution for males, primiparous, multiparous and ovigerous females by stratum and depth. (Continues).

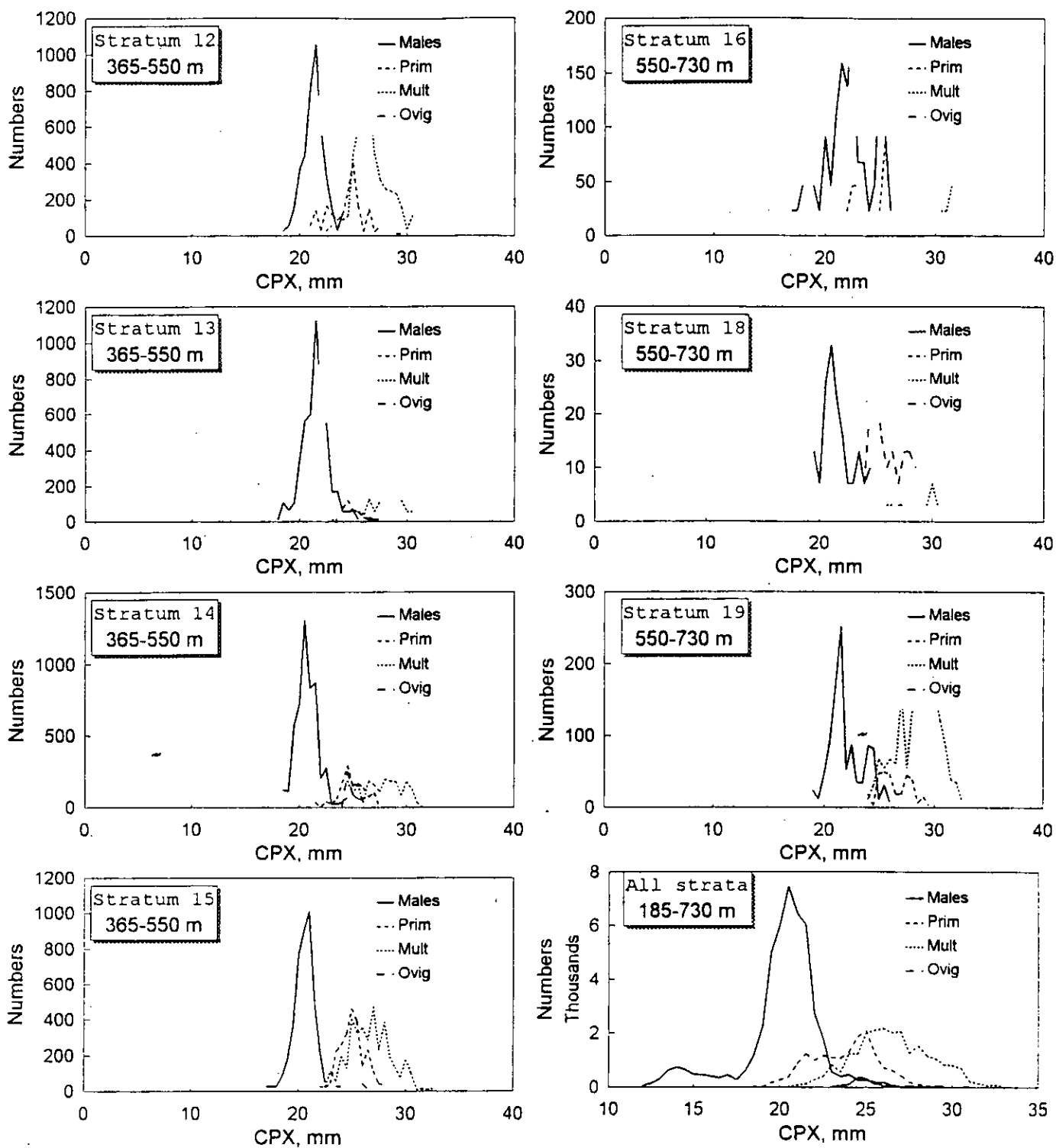


Figure 1 Length distribution for males, primiparous, multiparous and ovigerous females by stratum and depth. (Continued).