



SCIENTIFIC COUNCIL MEETING – SEPTEMBER 2008

Division 3M Northern shrimp (*Pandalus borealis*) – Interim Monitoring Update

By

J.M. Casas Sánchez

Abstract

This document updates some of the indices for northern shrimp (*Pandalus borealis*) harvested within NAFO Divisions 3M. The assessment for this resource was completed, within Scientific Council during autumn 2007, and although it was not possible to present a management advice on a specific TAC due to insufficient information, in light of the poor prospect for this stock, the scientific council recommended that the exploitation level for 2008 and 2009 should not exceed the 2005 and 2006 levels. The catch table (to September 2008) and biomass estimates (EU survey summer 1988-2008) are updated within this report. Preliminary data indicate that 20 533 t and 16 869 t of shrimp were taken in 2006 and 2007 respectively against an annual TAC of 48 000 t. In the 2008 EU survey the 3M biomass index was 10 931 t, the lowest value of the last 10 years and confirm the decreasing trend initiated in 2002.

Fishery and Management

Effort and TAC regulation

During 2007 meeting, Scientific Council (NAFO 2007) noted there was insufficient information on which to base predictions of annual yield potential for this resource and was therefore unable to advise on a specific TAC for 2008 and 2009. However, in light of the poor prospect for this stock, the Scientific Council recommended that exploitation level for 2008 and 2009 should not exceed the 2005-2006 levels. This corresponds to catches in the range of 17,000 to 32,000 tons.

Catch trends

The fishery for northern shrimp at Flemish Cap began in the spring of 1993 and has since continued with estimated annual catches (as estimated by STACFIS, Table 1) of approximately 26 000 t to 48 000 t in the years 1993 through 1996. After 1996 catches were lower and rising slowly from 26 000 t in 1997 to 53 000 t in 2000 and 2001. There was 50 000 t taken in 2002. The catch increased in 2003, reaching the highest value in the catches series (64 000t), declining to about 21 000 and 17 000 t in 2006 and 2007 respectively. Removals to September 2008 (about 8 000 t) are similar to the reported in 2007 for the same period but much lower than usually reported in previous years.

UE Bottom Trawl Research Survey Trends

Summer multi-species research surveys have been conducted onboard the Spanish vessels R/V Cornide de Saavedra since 1988 and R/V Vizconde de Eza since 2003. From 1988 to 2002 the indexes estimated by the R/V Cornide de Saavedra were calibrated and transformed to the R/V Vizconde de Eza following the Warren's method. Fishing sets of 30 minute duration, with a tow speed of 3 knots, were randomly allocated to strata covering the Flemish Cap Bank to a depth of 1 462 m since 2004, with the number of sets in a stratum proportional to its size (Figure 2). Both vessels used the same gear (Lofoten) with a codend mesh size of 35 mm. In order to obtain information about the juvenile fraction of the stock, since 2001 a bag with 6 mm mesh size was attached to the cod-end of the Lofoten gear. SCANMAR sensors were employed to monitor net geometry. Details of the survey design and fishing protocols are outlined in (Casas, 2007).

The increasing of biomass since 1988 to 1992, coincided with a period of time where there was not a directed fishery to shrimp and the cod stock began to decline. With the beginning of the shrimp fishery in 1993 the biomass declined up to 1997. After that the stock recovered reasonably well although with high annual variability in the last years (historical maximums in 2002 and 2005 were followed by years with lower biomass but at a relative high level). The total and female biomass 11 171 t and 8 705 t respectively estimated in 2008 (Table 2), were the lowest values of biomass in the last ten years and about a 36 % lesser than the estimated in 2007, showing a decreasing trend in the biomass of this stock (Figure 3).

Biomass estimated by depth strata from 1988 to 2008 is shown in Table 3. The presence of shrimp in shallowest strata, with depths less than 140 fathoms (257 m), was scarce in the first years (1988-1995). However, since 1996, a noticeable amount of shrimp occurred in these strata and the estimated biomass increased up to 2002 year where 12 978 tons, about the 36 % of the total biomass were estimated in depths lesser than 140 fathoms. After 2002 the biomass estimated in these depths declined each year and in 2008 was residual (about 0.4 % of total biomass). In accordance with this, the catch distributions observed during the 2008 survey (Fig. 4) showed a distribution around the central area of the bank but in depths higher than in previous years.

As in the last years (2003-2007) the youngest specimens (age 1) didn't appear in the catches (Figure 5) , and they were weakly presents in the small mesh size bag attached to the cod-end, suggesting the absence of any strong year classes since 2003.

Considering the abundance at age 2 as indicator of recruitment, the number of shrimp of two years old in the survey and from juvenile bag (Figure 6) were estimated and the index average-weighted. Both indexes showed a similar trend with the exception of 2003 and 2006 years where the less marked changes showed different trends. From both indexes the 2003-2006 year class ought to be considered as weak year classes.

Conclusions

Preliminary data indicate that 7 971 t of shrimp had been taken in the 3M shrimp fishery by september 2008 and it is anticipated that the catch around 16 000 t would be taken by the end of December 2008.

The low values of the Total and Female biomass index in 2008 confirm the decreasing trend of this stock caused by the weak recruitment in the last four years. Based on the information available no change is proposed for the Scientific Council advice for which the exploitation level in 2009 should not exceed the 2005-2007 levels. This would correspond to catches in the range of 17 000 to 32 000 tons.

References

Casas, J. M. 2007. Northern Shrimp (*Pandalus borealis*) on Flemish Cap Surveys 2007. NAFO SCR Doc.07/ 78, Serial No.N5464

NAFO. 2007. Scientific Council Meeting, October 24-November 1, 2007. Appendix IV. Formulation of advice.

Table 1. Annual nominal catches (t) by country of northern shrimp (*Pandalus borealis*) caught in NAFO Div. 3M.

Nation	1993	1994	1995	1996	1997	1998	1999	2000	2001	2002	2003	2004	2005	2006	2007	2008
Canada	3724	1041	970	906	807	484	490 ²	618 ¹	295 ²	16				² 10		
Cuba							119 ¹	46 ¹	1037 ¹	1537 ¹	1462 ¹	969 ¹	964 ¹	1126 ¹	446 ¹	* 11
EU/Estonia		1081	2092	1900	3240	5694	10835 ²	13256 ¹	9851 ²	14215 ¹	12851 ¹	13444 ²	17525 ¹	11302 ¹	7466 ¹	* 7247
EU/Denmark	800	400	200			437	235		93	1359						
EU/Latvia		300	350	1940 ¹	997 ¹	1191 ¹	3080 ¹	3105 ¹	2961 ¹	1892 ¹	3533 ¹	3059 ¹	2212 ¹	1330 ¹	1939 ¹	
EU/Lithuania		1225	675	2900 ¹	1785 ¹	3107 ¹	3370 ¹	3529 ¹	2701 ¹	3321 ¹	3744 ¹	4802 ¹	3652 ¹	1245 ¹	1992 ¹	
EU/Poland					824 ¹	148 ¹	894 ¹	1692 ¹	209			1158 ¹	458 ¹	224		
EU/Portugal	300		150		170 ¹	203 ¹	227 ¹	289 ¹	420 ¹	16		50				
EU/Spain	240	300	158	50 ¹	423 ¹	912 ¹	1020 ¹	1347 ¹	855 ¹	674 ¹	857 ¹	2724 ⁴	725 ⁴	997 ⁴	768	
EU/United Kingdom											¹ 547					* 693
Faroe Is.	7333	6791	5993	8688	7410	9368	9199 ²	7719 ²	10228 ²	8516 ²	12676 ²	4952 ¹	2457 ¹	1102 ¹	2303 ¹	
France (SPM)					150		¹ 138	¹ 337	¹ 161				487			
Greenland	¹ 3788	¹ 2275	¹ 2400	¹ 1107	¹ 104	866 ¹	576 ¹	1734 ¹		644 ¹	1990 ¹		12 ²	778		
Iceland	2243	¹ 2355	7623 ¹	20680 ¹	7197 ¹	6572	9277 ²	8912 ²	5265 ¹	5754 ¹	4715 ¹	3567 ¹	4014 ¹	2099		
Japan							¹ 114	¹ 130	¹ 100	¹ 117						
Norway	7183	8461	9533	5683 ¹	1831 ¹	1339 ¹	2975 ²	2669 ¹	12972 ¹	11833 ¹	21238 ¹	11738 ¹	223 ¹	890 ¹	1872	
Russia		350	3327	4445	1090		1142 ¹	7070 ¹	5687 ¹	1176 ¹	3 ¹	654 ¹	266 ¹	46 ¹	73	* 20
Ukraine									¹ 348		¹ 237	¹ 315		¹ 282		
USA							¹ 629									
Total	25611	24579	33471	48299	26028	30321	43439	52867	53389	50214	63970	47432	32995	21431	16859	7971

- 1 NAFO Statlant 21 A
- 2 From the fisheries biologist of respective countries
- 3 Assessed by Stacfis
- 4 Reported to NAFO provisionally
- * Provisional to 10 September

Table 2. Total and female biomass (tons) of shrimp estimated by swept area method in the years 1988-2008 on EU Flemish Cap surveys.

Year	Total Biomass (tons)	Female Biomass (tons)	Valid Sets Number*
1988	5615	4525	115
1989	2252	1359	116
1990	3405	1363	113
1991	11352	6365	117
1992	24508	15472	117
1993	11673	6923	101
1994 ¹	3879	2945	116
1995	7276	4857	121
1996	10461	5132	117
1997	7449	4885	117
1998 ²	39367	11444	119
1999	24692	13669	117
2000	19003	10172	120
2001	27204	13336	120
2002	36510	17091	120
2003	21087	11589	177
2004	20182	12081	177
2005	30675	14381	176
2006	16235	11477	179
2007	17046	12843	176
2008	11171	8705	166

*Since 2003 the area surveyed and strata number increased up to depths from 740 to 1450 m. increasing proportionally the number of sets.

Table 3. Total shrimp biomass estimated by strata (tons) in the years 1988-2008 from EU Flemish Cap surveys. Between 1988 and 2002 data were transformed by Warren's method.

Stratum	Depth (Fathoms)	1988	1989	1990	1991	1992	1993	1994 ¹	1995	1996	1997	1998 ²	1999	2000	2001	2002	2003	2004	2005	2006	2007	2008
1	70-80																3	0			0	
2	81-100											175			69	112	690	217	164	8	50	0
3	101-140				10					148	39	639	450	1486	2169	5527	1817	2107	1023	477	20	11
4	101-140											239	596	306	1099	1942	637	785	2395	1195	11	1
5	101-140					8				26	110	1107	1948	2135	2782	2445	3780	867	695	664	558	11
6	101-140				32	2	5		20	422	161	2915	1142	657	2112	2951	1667	1250	883	299	462	23
7	141-200		30	400	1265	3763	2704	117	506	1336	988	4056	3072	2213	3006	4632	1521	3108	2607	1370	1642	468
8	141-200			88	248	1662	826	4	248	676	393	2402	2507	1140	2900	4257	1110	2043	4585	3084	709	1938
9	141-200	133	69	35			135		613	459	412	3981	1139	1110	1483	1754	819	673	583	1435	1277	1159
10	141-200	275	75	321	2103	3235	1778	752	1315	1148	1099	7186	4052	2771	3760	3748	4685	2489	2447	614	3248	671
11	141-200	263		148	1144	4096	1335	447	650	1235	1018	6049	3017	3005	4091	3460	3003	2350	2284	1086	2878	368
12	201-300	2170	505	512	2361	4654	2115	636	1201	1295	1195	2042	2127	1082	845	1468	378	1222	1510	1524	1965	1585
13	201-300		66	64	89	38	136		28	687	554	1580	1465	43	620	217	23	230	689	691	373	1080
14	201-300	618	375	623	995	2543		679	792	1076	426	3034	1717	689	843	2014	303	726	2155	923	1481	1593
15	201-300	963	451	855	2004	3605	2292	1078	1370	1278	478	2575	1156	1753	837	1108	483	993	1039	1539	1597	1944
16	301-400	777	253	355	179	420	139	49	57	237	168	515	172	464	375	506	92	696	1099	840	526	136
17	301-400						35									3			5	196	56	33
18	301-400						175			43	9			6		44		42	42	115	8	10
19	301-400	134	359		792	388		118	467	397	404	887	109	121	229	311	61	366	402	173	187	61
20	401-500																	6	250	29	20	7
28	401-500																	52	130	175	54	71
33	401-500																		5		0	0
21	501-600																		0			0
34	501-600																		13		0	1

¹codend mesh-size 40 mm

²codend mesh-size 25 mm liner

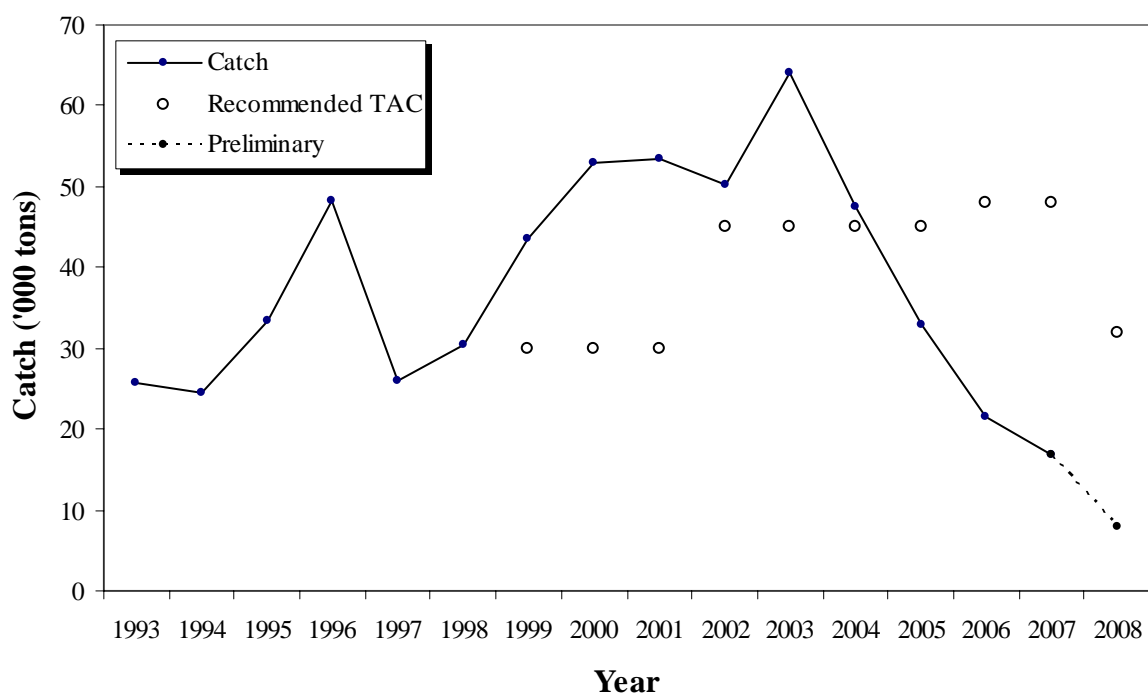


Figure 1. Trends in NAFO Div. 3M northern shrimp (*Pandalus borealis*) catch (t) and TAC over the period 1993-2008.

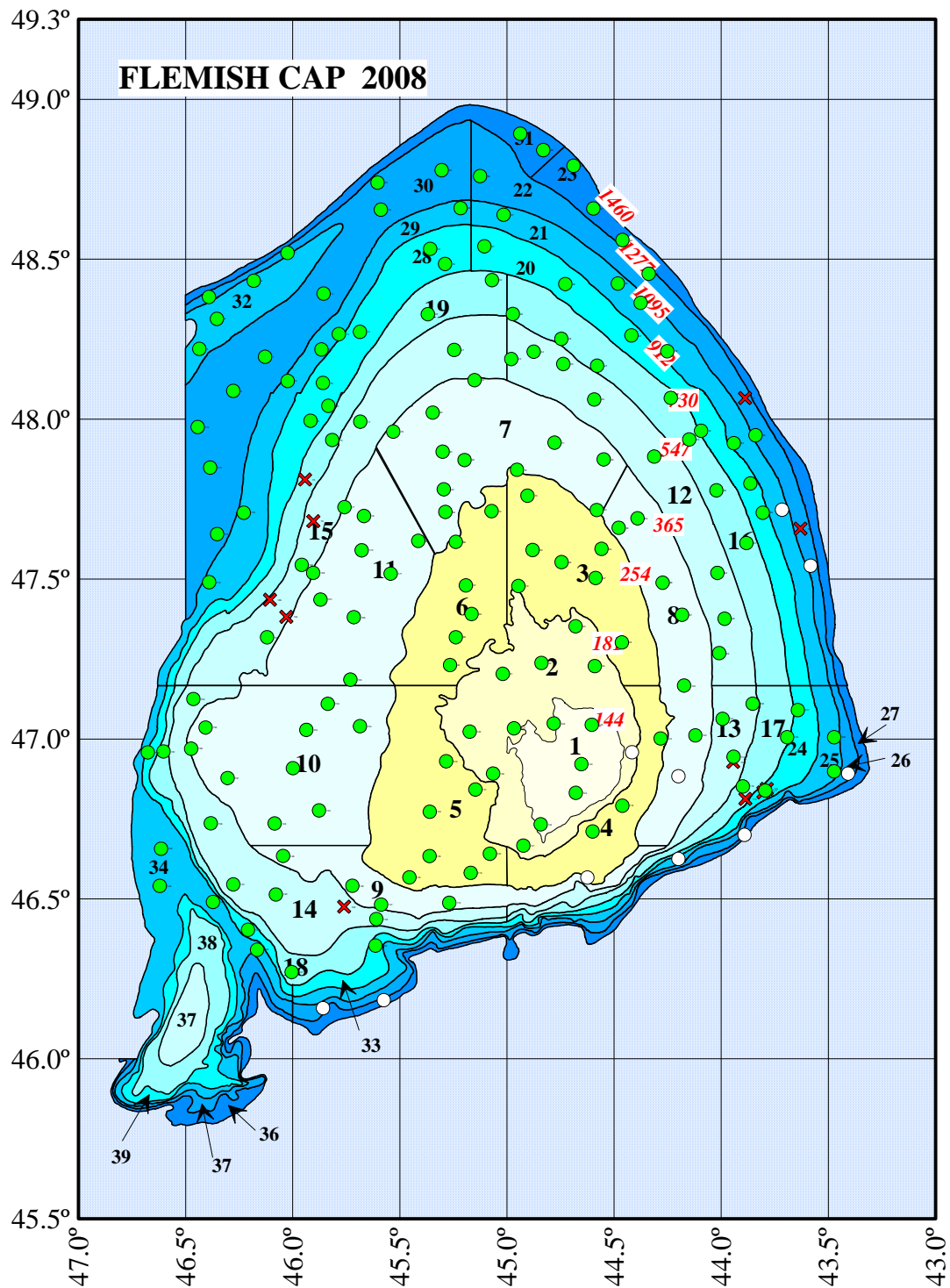


Figure 2. The NAFO 3M stratification scheme used in EU research bottom trawl survey showing the sets carried out in 2008.

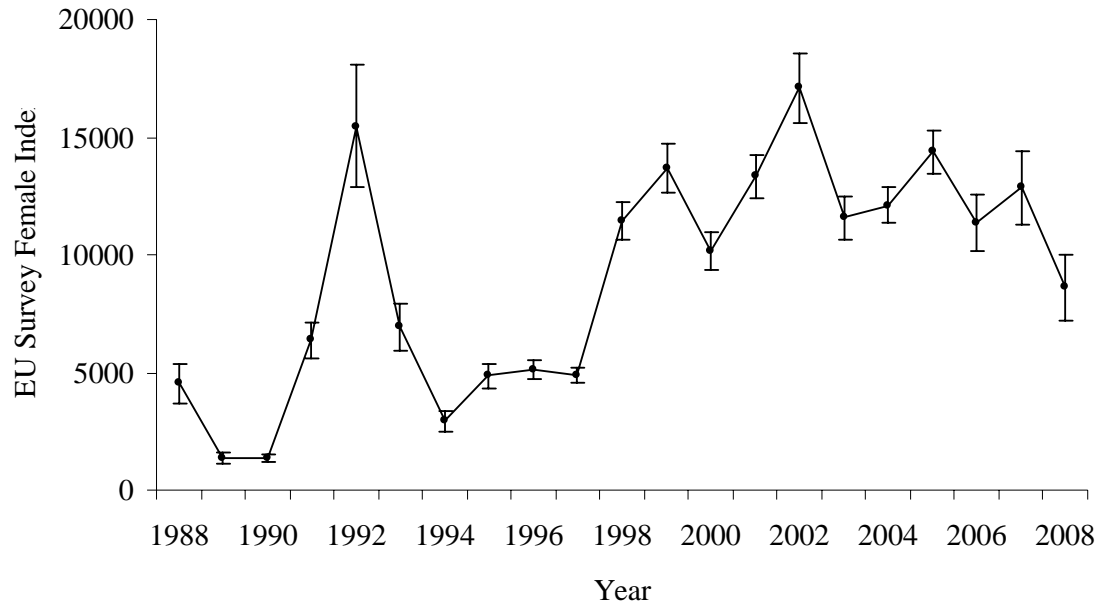


Figure 3. Female biomass of northern shrimp from EU Flemish Cap 1988-2008 surveys.

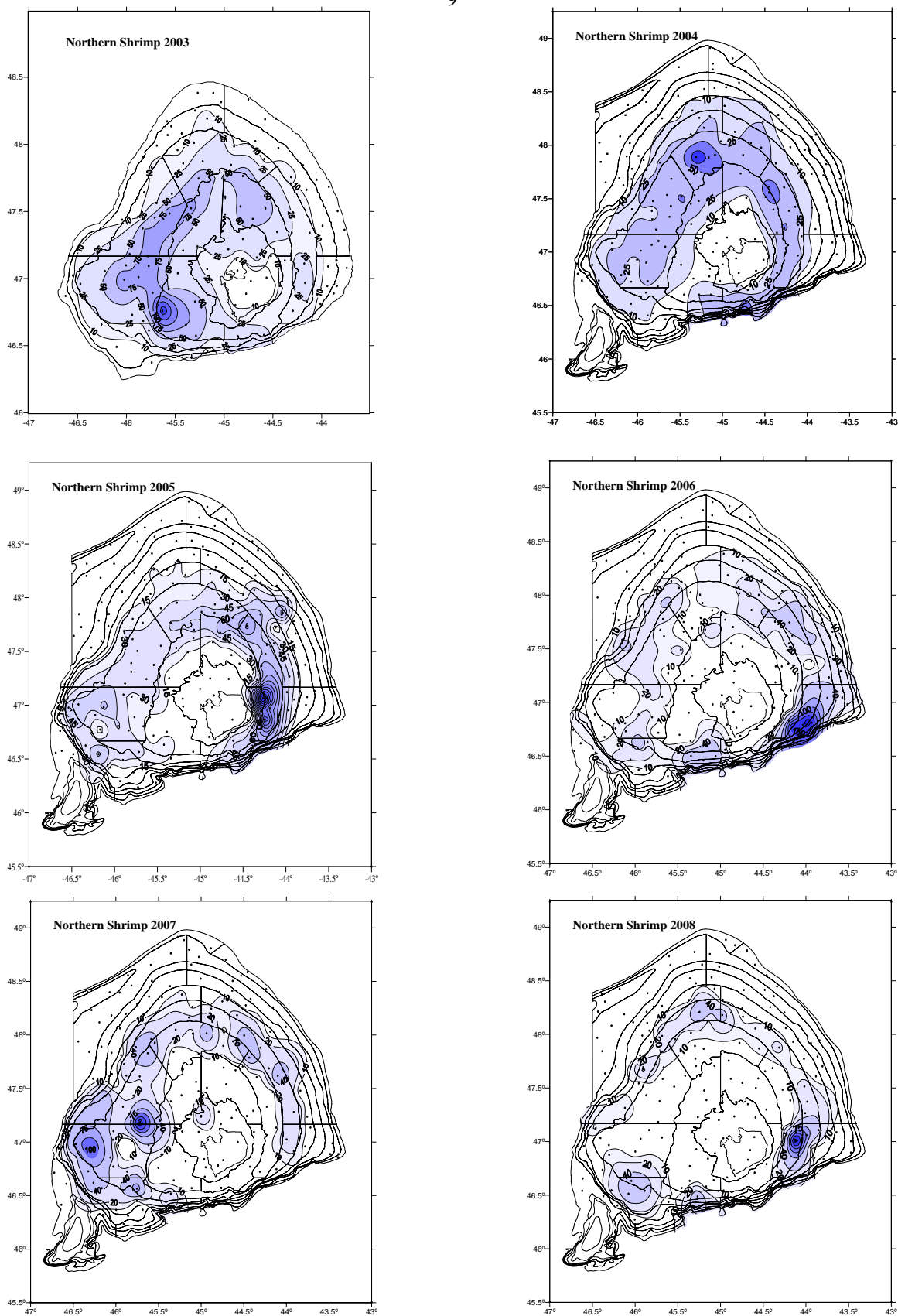


Figure 4.- Distribution of NAFO Div. 3M Northern shrimp (*Pandalus borealis*) catches kg/tow as obtained from EU research bottom trawl surveys conducted over the period 2003-2008.

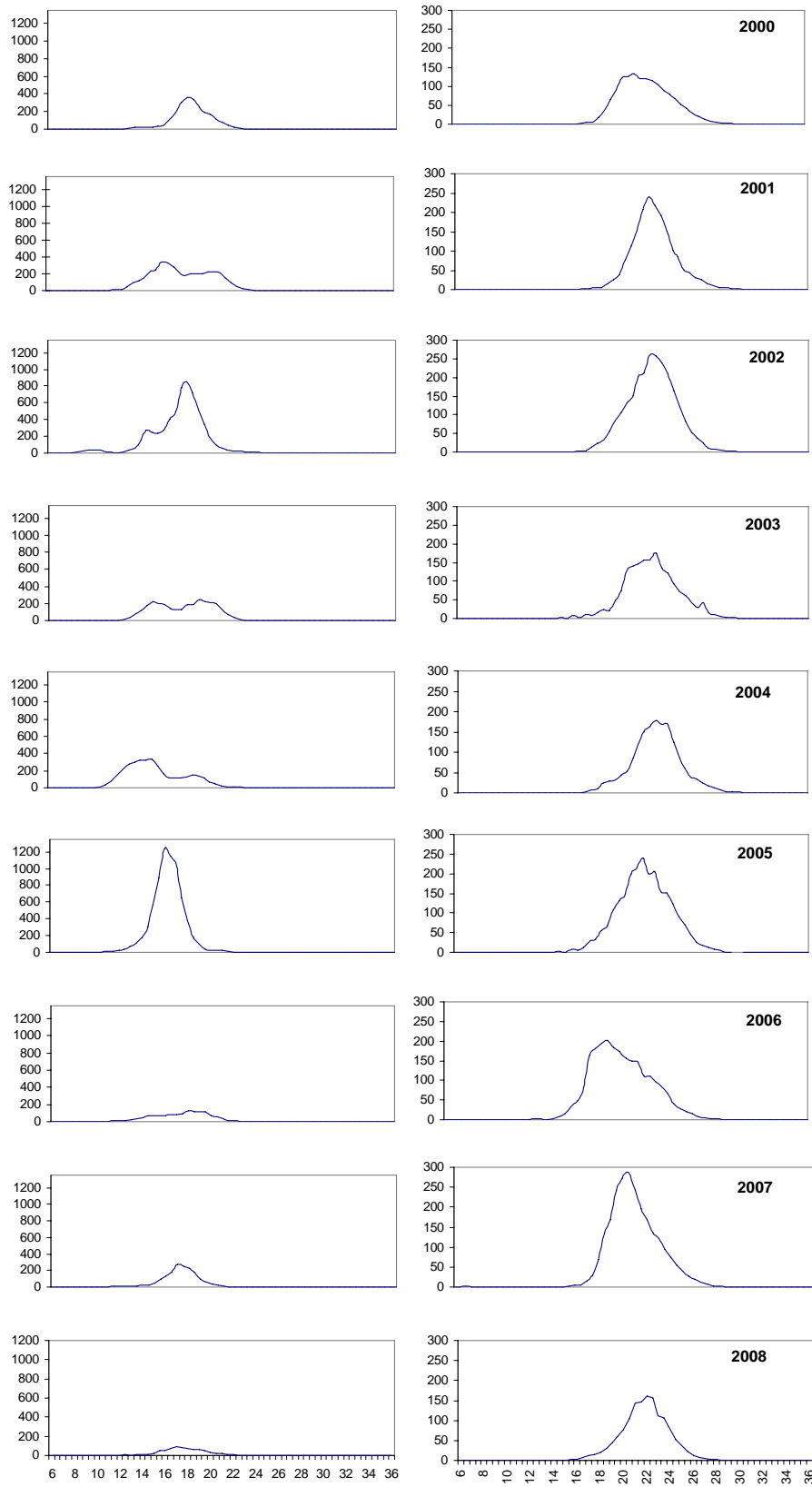


Figure 5. Shrimp size distribution from Flemish Cap 2000-2008 surveys.
Y-Axis=Frequency (10^6), X-Axis=Carapace Length (mm).

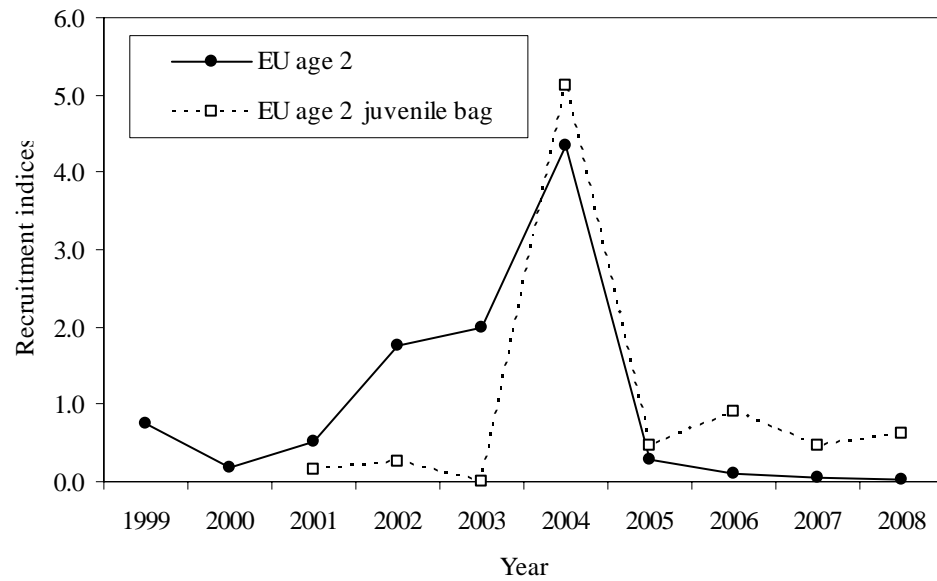


Figure 6. Abundance indexes at age 2 obtained in EU Flemish Cap surveys from Lofoten gear (red line) and Juvenile bag (blue line).