

Northwest Atlantic



Fisheries Organization

Serial No. N6217

NAFO SCR Doc. 13/056

**NAFO/ICES WG *PANDALUS* ASSESSMENT GROUP—September 2013**

The West Greenland trawl survey for *Pandalus borealis*, 2013, with reference to earlier results.

by

AnnDorte Burmeister, Michael C.S. Kingsley and Helle Siegstad

Greenland Institute of Natural Resources  
Box 570, 3900 Nuuk, Greenland

**Abstract**

A trawl survey is carried in NAFO Subarea 1 and NAFO Division 0A east of 60°30'W as a contribution to the assessment of the stock of the Northern Shrimp (*Pandalus borealis*). In 2013, 221 stations were fished in 42 fishing days; 181 provided data to the shrimp survey in all strata.

The 2003 peak in total survey and fishable biomasses has been followed by continuous decline, reaching in 2012 the lowest levels since 1997. Total survey biomass increased by 19% over 2012. While offshore survey biomass increased by 45% over 2012 and is about 60% of its previous maximum, in Disko Bay and Vaigat the survey biomass declined by 12%, and is 58% of its (2005) maximum and equal to its 2004 value. Offshore regions comprise 65% of the total survey biomass, and 35% is inshore in Disko Bay and Vaigat.

Surveyed regions showed increases in survey biomass of about 38% in U1-U3, 34% in the West (W1-W9), but a decrease of about 12% in Disko Bay and Vaigat compared with 2012 results. The increased survey biomasses in the W- areas were mainly caused by an increase of about 34% in W1 and W2, of 81% in areas W3 + W4—north, west and south of Store Hellefiskebanke, mainly due to three big catches in sub-strata W3-2, W4-2 and W4-3. However, biomass in the southern part area, W5-W9, amounted only 8.8% of the total estimated survey biomass in 2013 compared with 23.5% in 2012.

The Fishable proportion of the survey biomass is below the mean of the foregoing 20 years, and female biomass is high as a proportion both of the survey and of the fishable biomass in both regions, while the biomass of fishable males is low, the stock appearing deficient in these length classes. That the spawning stock should compose a high proportion of the total survey biomass makes the stock sensitive to fishing pressure: short-term recruitment to the spawning stock is likely to be low.

Both inshore and offshore the index of age-2 shrimps is well below its 20-year mean when considered relative to survey biomass. However absolute numbers of age-2 shrimps increased by more than 50% offshore, mainly owing to a significant increase in numbers of 2-age in strata W4, but they declined by 16% over 2012 in Disko Bay.

Since the late 1990s the stock is found in shallower water than before, but in 2013 the survey biomass depth index increased from its 2012 value.

Area-weighted mean bottom temperature in the survey area increased at the beginning of the 1990s, by about 1.6°C, and this relatively warm period continued in 2012.

## Introduction

Since 1988, the Greenland Institute of Natural Resources has carried out annual trawl surveys on the West Greenland shelf between June and August to assess the biomass and recruitment of the stock of *Pandalus borealis* and to obtain information on the size and sex composition of the stock as well as on the environmental conditions. This document presents the results of the 2013 survey, and compares them with revised series from previous surveys.

## Material and Methods

### *Survey design and area coverage*

The offshore survey area for the Northern shrimp, *Pandalus borealis*, covers waters on the West Greenland continental shelf from Kap Farvel in the south to latitude 72°30'N, comprising NAFO Sub area 1 and, where the shelf bulges into the Canadian EEZ, a small area in the eastern part of NAFO Div. 0A. In the late 1980s when the survey was initiated, *P. borealis* was fished in waters between about 150 m and 550 m deep, and the shrimp survey has always been restricted to depths between 150 m and 600 m. Since 1991 the survey has included the inshore areas of Disko Bay and Vaigat in NAFO Div. 1A but, along most of the coast, the survey does not cover areas closer to shore than 3 miles offshore of the fishery baseline. In some coastal areas fishable concentrations of *P. borealis* exist closer to shore than this, including areas that extend into some fjords (see e.g. Fig. 4a of Hammeken and Kingsley 2010).

The survey area is divided into primary and secondary strata. The survey primary strata correspond to geographical areas identified on the basis of logbook information on the distribution of the fishery (Carlsson *et al.* 2000). They are subdivided into four secondary (depth) strata at 150–200 m, 200–300 m, 300–400 m, and 400–600 m. When the survey was initiated, bathymetric information in Disko Bay, as well as offshore north of 69°30'N, did not support this depth stratification, and these regions were therefore originally subdivided into geographical substrata not based on depth. Depth data logged by the survey and other investigations eventually allowed these waters to be stratified on depth and a new geographical stratification with depth sub-strata was introduced in 2004 (Wieland and Kannevorf, 2004). At the same time, the geographical strata in the Canadian zone, formerly two, were merged into one.

From 1988 through 1999, trawl stations were allocated to strata in proportion to stratum area, but since 2000 more stations have been allocated to strata where biomass variances have been high in previous years in order to improve the precision of the overall biomass estimate (Kingsley *et al.*, 1999). An exponential smoothing of previous years' stratum variances was applied in the allocation procedure, giving higher influence to the more recent years. Past variance data for Atlantic cod and Greenland halibut is also made available to the allocation procedure, which is now set to minimise a weighted combination of the expected survey precision for the three species.

Generally the station layout is based on a division of the survey area into elements about 2 nautical miles square. Since 1999 survey stations have been positioned using 'buffered random' sampling, in which stations are placed randomly with the constraint that a minimum distance between them, which depends on station density within the stratum, must be observed (Kingsley *et al.*, 2004).

From 1988 through 1998, survey designs were independent from year to year, stations being placed anew in the strata. Since 1999 about 50% of the stations included in the preceding year's design have been repeated as fixed stations in the following year, the others being placed, as before, using the buffered sampling rules. Catches are correlated from year to year by position, and fixing stations improves the ability of the survey to indicate year-to-year changes in stock size by inducing serial correlation in survey error (Kingsley, 2001a).

In 2013, 171 stations were planned at depths between 150 and 600 m in the survey area, with 63 'extra' stations mapped and available to be included if time permitted. 143 of the 171 planned stations and 41 'extra' stations were fished. 29 stations were reported as having been moved more than 2 n.mi. from the planned position, with a mean of

3.1 n.mi.; 12 of the 29 because of untrawlable bottom. Of the 184 stations fished, 181 provided usable data to the shrimp survey. In the course of the shrimp survey, 36 CTD casts were made along standard transects offshore and in Disko Bay and Vaigat.

#### *Survey period and daily sampling period*

The trawl survey has been carried out every year between mid-June and the end of August to minimise the effect of seasonal cycles in the biology of the species. Trawling is carried out between 0800 and 2000 UTC; it appears that the daily vertical migration of the Northern shrimp is quite abrupt at sunrise and sunset and a shorter trawling day is not necessary.

#### *Tow duration*

From 1988 to 1997 all tows in the shrimp survey lasted 60 min. However, shorter tows give just as accurate results (Carlsson *et al.*, 2000; Kingsley, 2001b; Kingsley *et al.*, 2002; Wieland and Storr-Paulsen, 2006; Ziemer and Siegstad, 2009) and since 2005 the survey has been operated with 15-minute tows alone.

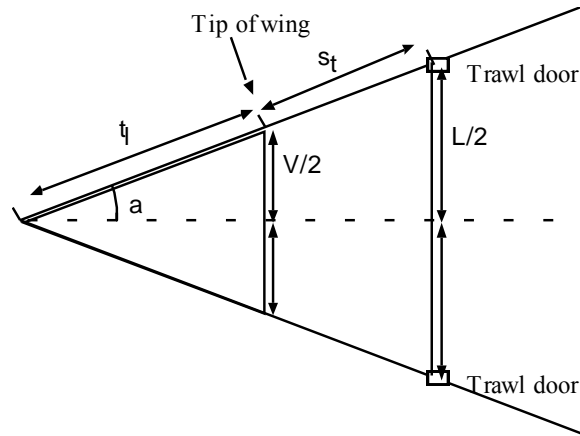
#### *Fishing practices*

The surveys have been conducted with the research trawler *Paamiut* (722 GRT) since 1991; similar vessels were used in 1988–1990. Initially, a 3000/20-mesh *Skjervøy* bottom trawl with a twin cod-end, and equipped with a heavy steel-bobbin footrope, was used. A 20-mm (stretched-mesh) liner was added to the 44-mm-mesh cod-end in 1993. From 1988 to 1991 estimates of trawl geometry—door spread and height of head-rope—were based on results from tank experiments at the Danish Institute for Fisheries Technology and Aquaculture. Since 1991 *Scanmar* acoustic sensors have been mounted on the trawl doors, and a *Furuno* trawl-eye on the head rope. Door-spread readings are recorded during the tow, and the reading from the trawl-eye is used to judge when the trawl has settled and the tow can be deemed started.

From 1988 through 2003 *Greenland Perfect* trawl doors were used, measuring 9.25 m<sup>2</sup> and weighing 2420 kg. They were replaced in 2004 by *Injector International* 7.5 m<sup>2</sup> trawl doors weighing 2800 kg to facilitate a change of survey trawl in 2005. In 2005 the *Skjervøy* 3000 trawl was replaced by a *Cosmos* 2000 trawl with ‘rock-hopper’ ground gear comprising steel bobbins and rubber disks. Towing speeds have been about 2.5 knots in all surveys.

#### *Swept area calculation*

Nominal swept area for each tow was calculated as the straight-line distance between its GPS start and end positions multiplied by the wingspread. The distance between the trawl doors should be recorded 3 or 5 times during each tow; provided it was recorded at least once, wingspread for a tow was calculated from the mean doorspread and the geometry of the trawl. For both trawls the wingspread (i.e. the width of the swept area)  $V$  has been calculated as follows. The trawl and the trawl plus bridles are assumed to form two similar triangles, bridles and wings making a straight line:



and the lengths of the bridles ( $s$ ) and the trawl wings ( $t$ ) are known. The wingspread  $V$  is then calculated as:

$$V = (t * L) / (t + s_t)$$

where  $L$  is the distance between the doors (doorspread).

The length of the *Skjervøy* trawl is 67.15 m and the length of the *Cosmos* trawl is 71.8 m, both measures excluding the cod-ends. Since 2004 the bridle length, i.e. the total length of lines, chains and shackles between the trawl doors and the tip of the trawl wing, has been 54 m for either trawl; other bridle lengths were used in earlier years (Table 1). In the case of the *Skjervøy* trawl, 0.7 m has been added to the calculated wingspread because the *Skjervøy* trawl is a three-winged trawl and the lower wings (directly attached to the ground-rope) were estimated to spread 0.35 meters wider than the middle wings on each side in tank experiments at the Danish Institute for Fisheries Technology and Aquaculture (Per Kanneworff, pers. com.).

If doorspread was not recorded in the course of a tow, the unweighted mean of the calculated wingspreads for the year was used, without regard to fishing depth or wire length. If the speed of the tow calculated from its duration and its start and end positions lay outside a range of 3.0 to 6.5 km/hr, its length was recalculated from the survey average towing speed and the tow duration.

### *Biomass estimation*

Each haul's catch was divided by its estimated swept area calculated from wingspread and track length to estimate a biomass density. Unweighted mean stratum densities were multiplied by the stratum area to compute stratum biomass, and a corresponding error variance for the stratum biomass estimate was also calculated for strata with two or more accepted hauls. For strata with only one accepted haul, an error coefficient of variation of 0.95 was assigned. Stratum biomasses and their error variances were summed to get regional and overall estimates.

### *Indices of distribution and location of shrimp biomass*

Indices to summarise how widely the survey biomass is distributed and a measure of its central latitude were calculated (Kingsley 2008). Data from surveys executed in 1994–2012 was used: there was no survey before 1994 in the southernmost areas and before 1991 in Disko Bay or Vaigat, but since 1994 the series has been consistent. Biomass estimates from the annual survey are customarily presented (e.g Ziemer 2008) for 7 divisions of the survey area:

- a northern division, formerly stratified as N1–N9, and re-stratified according to depth information (Wieland and Kanneworff 2004) as U1–U3 with depth strata;
- Disko Bay and Vaigat, formerly stratified as D1–D9, restratified as I1 and I2 with depth strata;
- Canadian Exclusive Economic Zone, once 2 divisions, now 1;
- subdivisions of the west coast, from the mouth of Disko Bay and adjacent shelf waters to Paamiut;
- an extreme southerly division, comprising Julianehåb Bay and adjacent waters.

These divisions were given southerly ranks: Julianehåb Bay and the adjacent shelf waters were 1; the subdivisions up the coast were given ranks 2, 3 and 4. The small Canadian sub-division was split, half being included with the subdivisions W1 and W2, and the other half included with survey subdivisions W3 and W4. Disko Bay and Vaigat were given rank 5, and the northernmost subdivision of the survey area was ranked 6.

Then a 'lat. index' was calculated as a mean rank for the survey, weighting by estimated total survey biomass. This index summarises how far north a (weighted) centre of gravity of the stock biomass lies.

A 'spread index' was calculated as a Simpson diversity index (Simpson 1949) of the distribution of the biomass:

$$SpreadIndex = \left( \sum_{Subdivisions} Biomass_{Subdiv} \right)^2 / \sum_{Subdivisions} (Biomass_{Subdiv})^2$$

This index summarises how widely the survey stock biomass is distributed among survey subdivisions.

#### *Depth distribution of biomass.*

The overall depth distribution of the estimated survey biomass was calculated according to available depth information. Up to 2003, such information was only available for the west-coast area W and the Canadian EEZ, and the depth distribution of the biomass was analysed only for those areas. Since 2004, the northern area and the inshore areas in Disko Bay and Vaigat have been sub-stratified depth and the depth analysis extended to those areas.

A single depth index, in metres, was calculated by assuming that the entire survey biomass in any depth stratum was concentrated at the stratum's midpoint depth, except for the deepest stratum: the fishery takes little from water deeper than 520 m, so the central depth for the 400–600 m stratum was set at 460 m.

#### *Sampling, weighting and "area expansion"*

The composition of the stock by size and sex is based on a two-stage analysis of lengths and weights. From catch samples, 1000–2000 individual shrimps are both weighed and measured, and these measurement pairs are used to estimate a weight-length relationship. From each catch a sample of about 0.5 to 3 kg was taken and sorted to species. All specimens of Northern shrimp were classified: juveniles and males composed one class, primiparous and multiparous females two others (Allen 1959, McCrary 1971). The oblique carapace length (CL) of each shrimp in the sample was measured to the nearest 0.1 mm. These length measurements are then supplemented with weight estimates based on the fitted weight-length curve. Aggregated, and then averaged over the stations in a stratum, these observations of sex and measurements of length and their associated estimates of weight are used to estimate the distribution of the stratum biomass between sex and length classes as well as the numbers of shrimps in the stratum in the various sex and length classes.

The descriptions of calculation methods that follow consider only one stratum. Survey strata are considered here as independent sampling problems. Survey totals are got by summing stratum results. 'Length class' can be generalized to include sex or sex-length class. From the catch and swept area at a station, the single-station estimate of stratum biomass is

$$\hat{B}_{ts} = \frac{Strat.Area_t \cdot Catch_{ts}}{Sw.Area_{ts}}$$

These single-station estimates are averaged. An unweighted analysis gives

$$\hat{B}_t = \frac{Strat.Area_t}{K_t} \sum_s \frac{Catch_{ts}}{Sw.Area_{ts}}$$

where  $t$  is the stratum and  $s$  is the station, of which there are  $K_t$  in stratum  $t$ . Shrimp density does not vary much within a haul's distance (Kingsley et al. 2002) and so it is statistically preferable to use the unweighted mean estimate of stratum biomass. This is what is done in the West Greenland survey.

If the number of shrimps in class  $l$  in the Length Sample, of weight  $Samp.Wt_{ts}$ , from station  $s$  in stratum  $t$  is  $n_{lts}$ , the corresponding single-station estimate of the number of shrimps in the class in the stratum is

$$\hat{N}_{lts} = Strat.Area_t \frac{n_{lts}}{Samp.Wt_{ts}} \cdot \frac{Catch_{ts}}{Sw.Area_{ts}}$$

The stratum estimate from many stations is:

$$\hat{N}_{lt} = \frac{Strat.Area_t}{K_t} \sum_s \left( \frac{n_{lts}}{Samp.Wt_{ts}} \cdot \frac{Catch_{ts}}{Sw.Area_{ts}} \right)$$

where the divisor  $K_t$ , the number of stations, includes those with no catch. The coefficient

$$\frac{Catch_{ts}}{Samp.Wt_{ts} \cdot Sw.Area_{ts}}$$

common to all length (and sex) classes counted in the Length Sample for a station can be called its 'raising factor'. Given these estimates of numbers, and if estimates  $w(l)$  of individual weight at length are available, length-class biomass is given by

$$\hat{W}_{lt} = w(l) \frac{Strat.Area_t}{K_t} \sum_s \left( \frac{n_{lts}}{Samp.Wt_{ts}} \cdot \frac{Catch_{ts}}{Sw.Area_{ts}} \right)$$

Provided that for all Length Samples  $\sum_l n_{lts} w(l) = Samp.Wt_{ts}$ , i.e. the weight of every Length Sample answers

exactly to the number and size of the shrimps that compose it, the sum of length-class biomasses equals the stratum total biomass calculated from catches and swept areas. This is ensured by using, as the weight of the Length Sample, the total weight of the shrimps it comprises, calculated from the weight-length function, instead of using its weighed weight. In effect, the length-measurement data is used only to partition the stock biomass between sex and length classes.

Where catches were, for one reason or another, not sampled for lengths, the mean of the length frequency distributions from the available samples in that stratum, each raised by its catch and swept area, was applied to the entire stratum biomass. If it occurred that there were no length samples from the catches in an entire stratum, the length distribution estimated for the entire survey from data for the strata that did have length samples would be applied to its estimated biomass.

Results from these calculations were subsequently used to construct area-specific length frequency distributions (LFD). LFD results were used to calculate indices of numbers by sex and length, biomass by sex, an index of fishable biomass (comprising shrimps at least 17 mm CPL), and numbers of small pre-recruits ('age 2 shrimps'), which are expected to enter the fishery in coming years.

For data since 2007 the following weight-length relationship has been fitted:

$$w(l) = w_0 + a \cdot (l - l_0)^z$$

with the parameter  $l_0$  constrained to be less than 4.5 mm. A weighted fit was used with constant coefficient of variation about the fitted line.

As there is no reliable method of aging even young shrimps, indices of numbers at age are obtained by modal analysis of length frequencies for juveniles and males, attempting to fit overlapping age-specific normal distributions to the aggregated length distributions.

Modal analysis is carried out using CMIX (de la Mare, 1994, CMIX.EXE 1997, © Australian Antarctic Division), implemented as an Excel Add-In. CMIX fits overlapping Normal distributions to length frequency distributions by maximum-likelihood methods. It assumes that the length-density data have an Aitchison delta distribution, suitable for fitting to data from trawl surveys since it provides for the possibility that some survey hauls will catch nothing (Aitchison, 1955; Pennington, 1983). The data is so variable that for each analysis it is necessary to test whether all the fitted Normal distributions should be constrained to have the same coefficient of variation, or whether variances should be fitted separately for each one.

As growth is probably affected by temperature, the survey area is divided into 6 regions, defined from gradients in bottom temperature (Wieland, 2004), and estimated numbers in strata are pooled over regions. Length-frequency histograms are not smoothed before being analysed. The analyses of sex and length distribution in the stock, and the modal analyses, were re-done in 2011 for data from 2007–2011. To simplify the modal analysis and to get it to converge more easily, and because the main objective is to estimate the numbers at age 2, only the numbers for the ‘Juveniles and Males’ sex class were put through it. For this re-analysis, strata were grouped: U1 to U3, I1 and I2, W1 to W4, W5 and W6, and W7 to W9. Within each group, the estimated stock numbers in each stratum were aggregated over depth substrata, and the stratum aggregate numbers presented to CMIX as a haul. E.g. for the stratum group U1 to U3, CMIX was presented with three ‘hauls’, each comprising the numbers at length estimated for an entire stratum. The resulting fitted components were adjusted (by very small factors) to bring the sum of the CMIX fitted numbers into exact agreement with the demographic estimates.

### *Bottom temperature*

Bottom temperature was measured with a *Starmon* sensor mounted on one of the trawl doors. It records at intervals of 30 s with a resolution of 0.01°C. The average temperature for each haul was calculated after retrieval of the sensor. All measurements taken at greater depths than 150 m were used to calculate a mean bottom temperature weighted for the areas of the survey strata between 150 and 600 m depth.

## **Results and Discussion**

### *Survey conduct and progress.*

The survey in 2013 started from Nuuk on 06 June. The first cruise occupied stations from Nuuk north to Disko Bay having occupied 96 stations in 18 days. The second cruise occupied 60 stations in 12 days in Vaigat, north to the survey limit, and west of Disko on its way back south, the northern area being less densely sampled and steaming times longer. The second cruise was accompanied by a crew engaged in taking photographs of the sea bottom to investigate the long-term effects of trawling on bottom ecosystems, who used the ship at night when the survey was suspended.

The third cruise started from Nuuk on 13 July to occupy stations south to the southern limit of the survey and occupied 59 stations at 16 days until July the 28.

Of the 58 planned survey strata, 1 (the Canadian zone C0, C0-4) and W9-4 had no stations trawled, and 3 had only 1 each (U3-1, W2-4 and W6-4). 32 stations had no catch of *P. borealis*; 6 strata, with 12 occupied stations between

them, had no catches and only strata U2, U3, I1, I2, and W2 had catches of *P. borealis* at all stations. Length samples were measured from 140 stations with catches, even very small ones.

There were no exceptionally large catches and no catches exceeded 1 ton. There were 21 catches over 200 kg, of which 13 were made in Disko Bay or Vaigat, one north from 69°30' N and 5 in strata W1-W4. Disko Bay or Vaigat, sub-strata I-1 and W4-3 in Holsteinsborg Dyb each had one bigish catch, of 898 and 986 kg respectively. In southerly areas, strata W6-W9 yielded an average catch of 3.4kg and 25 of 42 stations had no catch of *P. borealis*.

#### *Overall Biomass and Area Distribution.*

For all strata biomass estimates have been calculated (Table 2) on the basis of the nominal swept area. The biomass estimates (in tons) for the five main regions and the entire survey area in 2011 were:

Region–2011	Biomass estimate (t)	Number of stations	ECV (%)
North (U1-U3)	55 525	25	9.75
Canadian zone (C0)*	—	0	—
West (W1–W9)*	112 215	137	30.04
Disko Bay & Vaigat (I1, I2)	92 850	30	12.40
Total	260 590	192	13.84

- sub-stratum W1-4 (400–600 m) and area C0 were not surveyed in 2011 because of sea-ice cover.

in 2012:

Region–2012	Biomass estimate (t)	Number of stations	ECV (%)
North (U1-U3)	33 469	26	16.0
Canadian zone (C0)*	—	0	—
West (W1–W9)	64 360	141	18.2
Disko Bay & Vaigat (I1, I2)	92 473	26	17.4
Total	190 302	193	10.8

- Area C0 was not surveyed in 2012 because of ice.

and in 2013:

Region–2013	Biomass estimate (t)	Number of stations	ECV (%)
North (U1-U3)	54 085	29	16.1
Canadian zone (C0)*	0 412	4	76.8
West (W1–W9)	97 901	126	19.8
Disko Bay & Vaigat (I1, I2)	81 377	22	11.6
Total	233 775	181	9.9

- sub-strata C0-4 Area was not surveyed in 2013 because of ice and W9-4 (400-600) due to poor bottom conditions.

The 2010 total survey biomass increased over the levels recorded in 2008 and 2009, which averaged 280 Kt, and had been close to the 2007 result. In 2011 all surveyed regions showed decreases in survey biomass compared with the 2010 results of about 24% in the North and about 34% in the West, but only 6% in Disko Bay and Vaigat. Very low survey biomass were observed in strata W3 and W4, which amounted only 11% of their 1988-2010 mean and the biomass was mainly concentrated north of 68°34.5' N. The declining trend in survey biomass continued in 2012, where biomass estimate for Disko Bay and Vaigat was little changed from 2011, but were further large decreased in U1–U3, of 40%, and in the southern offshore area (the W areas), of 44% (Table 2, table 3 and table 4).



In 2013 total biomass increased by 19% compared with its 2012 level, but was only 39% of the 1988–2013 mean (Figure 2a and 2b). Surveyed regions showed increases in survey biomass of about 38% in U1–U3 and 34% in the West (W1–W9), but a decrease of about 12% in Disko Bay and Vaigat compared with 2012 results. The increased survey biomass in the W- areas were mainly caused by an increase of about 34% in W1 and W2, of 81% in areas W3 + W4—north, west and south of Store Hellefiskebanke, mainly owing to three big catches in sub-strata W3-2, W4-2 and W4-3. However, biomass estimates for W5–W9 amounted only 8.8% of the total estimated survey biomass in 2013 compared with 23.5% in 2012.

Even though densities of *P. borealis* have been declining over the past three years, Disko and Vaigat had far higher densities (8.16 t/km<sup>2</sup>) than other areas (Fig 3a), over three times as high as the second highest, strata W1 and W2 combined (2.13 t/km<sup>2</sup>). Lowest densities were found in the Southern areas W8–W9 (0.05 t/km<sup>2</sup>) (Table 5). Mean density in all regions was 1.2 t/km<sup>2</sup> in 2013 and was below the 1988–2013 means (Fig. 3b).

The spread index, of how widely the survey thinks the stock biomass is distributed, showed a further decrease in 2013, while the north index remained close to the high value of the previous 5 years, with little change (Fig. 4).

#### *Depth distribution of the shrimp biomass.*

During the early and mid-1990s the depth distribution of the survey biomass was stable, with a significant contribution from the 400–600 m stratum, but most of the biomass found in 300–400 m of water (Fig. 5a). From 1990 to 1998 the average distribution was 1.9% in 150–200 m of water, 25.2% in 200–300m, 55.9% in 300–400 m, and 17.1% deeper than 400 m; the survey biomass depth index was stable near 350 m (Fig 5.b). In the late 1990s this situation started to change. The proportion in water 300–600 m deep decreased and that in the 200–300-m stratum increased greatly. In the late 1990s, the stock biomass started the sustained increase that peaked in 2003.

Somewhat later, starting in the early 2000s, the shallowest stratum, which is only 50 m from shallowest to deepest, also started to contribute a little more to the biomass than it had done.

The 200–300 m stratum started showing biomass increases as early as the late-1990s, and at that time the deepest stratum also started its decline—hence the start of the change in the mean-depth index. The 150–200 and 300–400 m strata increased later, and less. After 2004 and until 2012, the biomass has declined in all strata, but proportionally by more in the deepest two strata.

Compared with this shift in the depth distribution of the survey biomass, a shift in the depth distribution of the commercial catches appears to have started earlier. In 1991–1994 the median catch depth was 347 m but in 1995–98 it had already decreased by about 30 m, and by 2003–2006 it was 100 m less at 247 m (Kingsley 2011). This change has stayed in place in the case of the inshore fleet, which in 2007–2010 was still taking its median catch at 255 m, but the offshore catches show slight signs of moving back to deeper water with a median catch depth of 277 m in 2007–2010. The fraction of catches taken in water shallower than the lower limit of the survey, i.e. 150 m, is however still only a few percent, so this is probably not the reason for the recent decrease in survey biomass; besides, the great increase in survey biomass between about 1997 and 2003 coincided with the first years of this shift of the biomass, and the fishery, into shallower water.

In 2012 16.5% of the survey biomass was estimated to be in 150–200 m of water, 57.5% in 200–300 m, 22.3% in 300–400 m and 3.6% deeper than 400 m. In fact, the distribution was reversed: 17% deeper than 400 m in the early years was replaced by 17% shallower than 150 m now, and 55% in 300–400 m of water by 55% in 200–300 m.

Depth distribution of survey biomass changed in 2013 with somewhat less biomass in the shallower water, as only 9.7% of the biomass was distributed at 150–200m, 50.3% in 200–300m, while an increase in survey biomass was observed for the deeper waters, to 35.4% at 300–400 m and 4.6% in 400–600m (Fig 5a and 5b).

In 2001–2013 the survey biomass depth index has ranged between 265 and 300 m, with an average near 281 m compared to an average of 329 m in the period from 1988 to 2000 (Fig 5.c). In 2013 the depth index was estimated to approx. 288 m, an increase of 21 m compared with 267 m in 2012.

### Bottom temperature and biomass

The overall mean bottom temperature in the shrimp survey area was stable near 0.9°C in the early 1990s. Between the mid- and the late 1990s it underwent a step increase and since the late 1990s it has been stable in the neighbourhood of 1.6°C. The increase has affected all depth strata and all areas. The depth distribution of the shrimp survey biomass appears to have shifted after, and not concurrently with, the temperature shift (Fig. 6). The latitude distribution of the stock has also shifted, but also *after* the temperature shift: it is *since* the late 1990s that the survey 'North index' has continually increased, and the mean catch latitude in the fishery reached its decided minimum, at 64°41'N, in 1998.

In summary: bottom temperature increased in a stepwise fashion in the mid- to late 90s, and after that the survey biomass moved north and into shallower water, and the fishery catches also moved north; but fishery catches started moving into shallower water when the temperature started to increase.

### Demography and recruitment

#### Length-weight relationships

In 2013, a single weight-length relationship was fitted to measurements of 2353 shrimps of all sex classes (Table.) Parameter values were little changed from 2012.

Table: *Pandalus borealis* in West Greenland: parameters of a relationship  $w(l) = w_0 + a \cdot (l - l_0)^z$  fitted to weight-length data for individual shrimps.

Year	$w_0$ (g)	coefficient $a$ (mg)	$l_0$ (mm)	exponent $z$	sample	scatter c.v. (%)
1988–2000	0	0.669	0	2.96		
2001–02	0	0.483	0	3.0576		
2003	0	0.752	0	2.9177		
2004	0	0.765	0	2.9092		
2005	0.03103	1.726	1.91	2.7188	1616	6.79
2006	0.05771	1.426	1.591	2.761204	1907	7.89
2007	0.7700	1.789	4.5*	2.78216	487	6.42
2008	-0.03285	1.4162	0.797398	2.7501	2147	6.67
2007–08	-0.121034	0.4031	-1.66043	3.052731	2634	6.88
2009	0.01823	2.774	2.19026	2.58902	1768	6.86
2010	0.1533	8.155	4.5*	2.32036	1096	6.66
2011	0.12993	9.75324	4.5*	2.25051	2569	6.64
2012	0.08185	8.928	4.229	2.27317	2300	7.31
2013	0.12644	9.541	4.5*	2.26021	2353	6.66

\*  $l_0$  must be no greater than 4.5 mm.

The scatter about the fitted weight-length relationship is consistent from year to year, except that the 2007 data, when the sample was relatively small, has a slightly smaller scatter, and 2006 a scatter markedly greater, than the other years. In 2012 also the scatter was larger than in most other years.

Table: *Pandalus borealis* in West Greenland: weights at length predicted from fitted weight-length relationships.

Year	Weight (g) at length (mm):			
	10	15	20	25
1988–2000	0.61	2.03	4.75	9.19
2001–2002	0.55	1.91	4.59	9.08
2003	0.62	2.03	4.70	9.02
2004	0.62	2.02	4.66	8.92
2005	0.54	1.91	4.56	8.82
2006	0.57	1.91	4.50	8.67
2007	0.98	2.01	4.44	8.75
2008	0.60	2.06	4.76	9.02
2007–2008	0.61	2.04	4.70	8.96
2009	0.59	2.06	4.82	9.12
2010	0.58	2.06	4.87	9.17
2011	0.58	2.07	4.79	8.86
2012	0.56	2.06	4.80	8.90
2013	0.58	2.07	4.80	8.92

Estimated weights at length are consistent over years, and there is very little change from 2010–2013. Recent years—2008–2013—seem to have heavier shrimps in the intermediate lengths, 15 and 20 mm. This might be connected with a shift in the timing of the West Greenland survey, which since 2008 has been about a fortnight earlier than in 2007 and before.

The mean weight of both sexes has decreased over the 24-year history of the survey (Fig. 8), by, on average, 81 mg/yr for females and 26 mg/yr for males. A reduction in the size at sex change could presumably change the mean size of both sexes without changing the overall mean size, but this has in fact decreased by 33 mg/yr. Alternatively, heavy fishing on the largest sizes or gear change—for example to smaller meshes—might reduce mean size in the standing stock. There is serial correlation in the residuals about the trend lines, presumably associated with the carry-over of a large fraction of the stock from one year to the next.

#### *Recruitment and mean length at age 2*

Some of the length-frequency plots—e.g. regions I and W1–W4 in 2008 (Fig. 9b) and 2010 (Fig. 9d)—show a first component with mean CPL at 7–8 mm. These shrimps had probably hatched in the spring of the year before. Catches of this first component are small owing to the mesh size used in the survey; even the second component is not fully retained by the survey gear (Wieland, 2002b).

Regional differences in length at age 2 are obvious: they tend to be larger in more southerly areas and in deeper water. Year-to-year changes in the mean length at age 2 have been related to shifts in bottom temperature and changes in stock density of shrimp (Wieland, 2005). For the most recent six years, however, estimates of the mean size at age 2 were fairly consistent (Table 9b).

In 1993–1995 estimates of numbers at age 2 were low, particularly in Disko Bay and Vaigat (Table 10, Fig. 11); in 1996 they were exceptionally high, especially offshore, but dropped again in 1997. After 1997, age-2 numbers increased steadily to peak in 2001, followed by a steady decline to 2005. A series minimum observed in 1995 was reached again in 2007.

A slight increase followed, but the estimates for 2011 of 3.6 bn and 2.08 bn in 2012 were considerably below the series mean of 6.5 bn. In 2013 numbers at age 2 increased to 3.11 bn, however still far below the 20-year mean (Fig. 11 and table 10). The increase in numbers of 2-age shrimp is due to a significant increase of age-2 shrimps in area W4, while there were almost no age-2 shrimps found in W1–W3.

Disko Bay and Vaigat, which include only about 7% of the survey area, contributed 28–72% of the numbers at age 2 in 1997–2005, and more than 40% in the period from 2006–2010 (Table 10). In 2011 and 2012 the contribution

from Disko Bay and Vaigat was about 64 - 68%, but in 2013, although this area has a relatively high proportion of both the survey biomass and the total numbers of shrimps, it only has 35% of the age-2 shrimps (Table 10).

Age-2 shrimps have always been few in the southernmost region W7 to W9, and since 2004 they have also been very few in W5 and W6. In the most recent years contributions of age-2 shrimps have been low in region W1-W4/C0 (8 – 12%), but constitute 49% of the total numbers in 2013 (Table 10).

The age-2 index is correlated with the fishable biomass two, three and four years later (Fig. 12); lags of two to four years in such a correlation might be reasonable considering that the main contribution to the fishable biomass comes from sizes corresponding to ages 4 to 6 years. The recent low numbers of small shrimps presage a decrease of the fishable biomass in the coming years to below the average of the late 1990s. However, these estimates are uncertain: the series both of age-2 numbers and of fishable biomass have strong serial correlation, which invalidates the nominal levels of statistical significance of the simple correlations.

#### *Numbers, spawning stock biomass and fishable biomass*

Given that the survey biomass is down to a low level than any seen since the late 1990s, it is expected that numbers and weights of all stock components are also low. Spawning stock biomass—i.e. of females—accounted for 44.4% of the total survey biomass in 2013, the highest value so far observed (Table 7). The number of females, estimated at 27.8%, is also the highest proportion of the estimated total yet seen (Table 6).

Compared with the length distributions in 2012, there are a greater proportion of the very smallest shrimps, those below about 15 mm CPL (13.1%) caught by this year survey, (Fig. 7 and Fig10). Also a greater proportion of the largest females above 23 mm CPL (Fig. 7 and Fig. 10), which composed over 24% of the stock by number; the length distribution is relatively deficient in the intermediate lengths. In spite of this, the fishable biomass is estimated at 93% of the survey total biomass, a proportion that is close to average, probably because of the unusually high proportion of females. The high proportion of large shrimps is expected to make the stock in its present state sensitive to fishing pressure, as the fishery prefers, in general, to catch the largest shrimps; while a deficiency in intermediate sizes bodes ill for short-term recruitment to the fishable and to the spawning stocks.

#### *Bottom temperature*

Area weighted bottom temperatures is given in Fig. 6. Unfortunately, owing technical difficulties, no new temperature data for 2013 is available for the entire surveyed regions. However, bottom temperatures in 2012 were around average.

Regionally the temperature in southern most areas (W5-W9) stayed on the relative high average. In W1-W3 it is slightly higher again this yr. In Disko and in U1-U3 it was approx. the same as last year. In shallow water in depth between 150-200 m the area weighted average bottom temperature is continuously rising since 2007. In conclusion the overall temperature was the same as the long term area weighted average temperature for West Greenland.

### **Conclusions**

#### *Stock size*

In aggregate, the stock has stopped the steep decline it has maintained until 2012, interrupted by a small increase in 2008–10, since its 2003 peak. Compared with the records in the entire time series (1988–2013) all available stock indicators indicate that stock size is still at a low level. Despite a survey biomass increase from 2012 to 2013 of approx. 19%, it is still 22% below the 1988-2013 mean and about 40% of the peak reached in 2003.

Inshore and offshore components showed different trajectories in 2013; while inshore survey biomass in Disko Bay and Vaigat decreased by 12% from 2012, offshore biomass increased by about 45%. The inshore region, Disko bay and Vaigat, contributed 35% of the total survey biomass and despite the decrease there compared with 2012, survey biomass was well above its 20-year mean of 66.6 Kt.. Offshore, and in aggregate, there was almost no increase from 2008–10; and since 2010 a rapid decline offshore, but this stopped in 2013, so now the offshore survey biomass is at 65% of its 20-year median.

### *Stock distribution*

The area over which the stock is distributed has decreased a little more since 2012, and it remains concentrated in few survey strata in the centre of its range. Mean densities are high in Disko Bay and Vaigat—somewhat changed since 2010-2012 records, declined but still above the 20-year mean. Densities increased in the two strata to the west of Disko Bay (W1-W2), increased by five times in W3-W4 north, south, and west of Store Hellefiskebanke, but falling almost to nothing in the Southern regions, where densities are practically zero on the continental slope west of the banks all the way from Store Hellefiskebanke to Kap Farvel.

The latitude index of the survey has only slightly declined over the past 3 years. Despite for an extraordinarily high proportion of biomass in Disko Bay in 2012, and low biomass in W3-W4 in 2011 and 2012, proportion of biomass distribution have been relatively constant during the time series for the inshore region, W1-W4, while proportion of survey biomass in W5-W9 has declined significantly and only constitute a small fraction of the total survey biomass.

Since the late 1990s, the stock appears to be found in shallower water than before. While some large catches were made in shallow water in 2011 and 2012 and the 150–200m stratum yielded its highest proportion of biomass ever in 2012, a smaller proportion of the survey biomass was distributed in the shallow strata in 2013, whereas proportions increased in the central depths from 201 to 400m. However, the depth index for the survey biomass has been stable since 2001.

### *Stock composition*

The stock in all surveyed regions is influenced by a high proportion of large females in the fishable as well as in the total biomass, whereas the proportion of males in the fishable biomass is low. Offshore and inshore components have had different historic trajectories. Inshore Disko Bay and Vaigat tend to have had more smaller shrimps than the aggregate offshore regions, and offshore regions have had higher proportion of females in the fishable biomass. However, this tendency seems to be less in 2013 than earlier, while female's compose a higher proportion of both the inshore as well as the offshore fishable biomass.

Despite a 50% increase over 2012, numbers at age 2 are overall at a low level and below the 20-year mean. In 2013 numbers of age-2 shrimps have decreased in Disko Bay and Vaigat but increased in absolute numbers offshore. Pre-recruits of 14-16.5 mm CPL are low in numbers in inshore as well as offshore regions.

## References

- ALLEN, J.A. 1959. On the biology of *Pandalus borealis* Kroger, with reference to a population off the Northumberland coast. *J. Mar. Biol. Assoc. U.K.*, **38**: 189-220.
- AITCHISON, J. 1955. On the distribution of a positive random variable having a discrete probability mass at the origin. *J. Am. Stat. Assoc.* 50: 901-908
- CARLSSON, D.M. and P. KANNEWORFF. 2000. Stratified-random trawl survey for shrimp (*Pandalus borealis*) in NAFO Sub area 0+1, in 2000. *NAFO SCR Doc.*, No. 78, Serial No. N4335.
- CARLSSON, D., O. FOLMER, P. KANNEWORFF, M.C.S. KINGSLEY and M. PENNINGTON. 2000. Improving the West Greenland Trawl Survey for shrimp (*Pandalus borealis*). *J. North. Atl. Fish. Sci.*, **27**: 151-160.
- KINGSLEY, M.C.S. 2001a. Effects in 2001 of recent modifications to the design of the West Greenland Shrimp Survey. *NAFO SCR Doc.*, No. 176, Serial No. N4565.
- KINGSLEY, M.C.S. 2001b. Studies in 2001 on the end effect of the Skjervøy 3000 trawl in the West Greenland shrimp survey. *NAFO SCR Doc.*, No. 177, Serial No. N4566.
- KINGSLEY, M.C.S., P. KANNEWORFF and D.M. CARLSSON. 1999. Modifications to the design of the trawl survey for *Pandalus borealis* in West Greenland waters: effects on bias and precision. *NAFO SCR Doc.*, No. 105, Serial No. N4184.
- KINGSLEY, M.C.S., D.M. CARLSSON, P. KANNEWORFF and M. PENNINGTON. 2002. Spatial structure of the resource of *Pandalus borealis* and some implications for trawl survey. *Fish. Res.* **58**: 171-183.
- KINGSLEY, M.C.S., P. KANNEWORFF and D.M. CARLSSON. 2004. Buffered random sampling: a sequential inhibited spatial point process applied to sampling in a trawl survey for Northern shrimp *Pandalus borealis* in West Greenland waters. *ICES J. Mar. Sci.*, **61**: 12-24.
- KINGSLEY, M.C.S. 2008. Indices of distribution and location of shrimp biomass for the West Greenland research trawl survey. *NAFO SCR Doc.*, No 78, Serial No. N5610.
- MCCRARY, J.A. 1971. Sternal spines as a characteristic for differentiating between females of some Pandalidae. *J. Fish. Res. Board Can.*, **28**: 98-100.
- PENNINGTON, M. 1983. Efficient estimators of abundance for fish and plankton surveys. *Biometrics* 39: 281-286
- WIELAND, K. 2002a. A new length-weight relationship for Northern shrimp (*Pandalus borealis*) off West Greenland (NAFO Subareas 0+1). *NAFO SCR Doc.*, No. 144, Serial No. N4773.
- WIELAND, K. 2002b. The use of fine-meshed bags for sampling juvenile Northern shrimp (*Pandalus borealis*) in the West Greenland Bottom Trawl Survey. *NAFO SCR Doc.*, No. 145, Serial No. N4774.
- WIELAND, K. 2004. Abundance, mean size at age and growth of Northern shrimp (*Pandalus borealis*) juveniles and males off West Greenland in 1993–2004. *NAFO SCR Doc.*, No. 04/73, Serial No. N5043.
- WIELAND, K. 2005. Changes in recruitment, growth and stock size of Northern shrimp (*Pandalus borealis*) at West Greenland: temperature and density-dependent effects at released predation pressure. *ICES J. Mar. Sci.* **62**: 1454-1462.
- WIELAND, K. and D.M. CARLSSON. 2001. Geographical distribution and mean size of different life stages of Northern shrimp (*Pandalus borealis*) off West Greenland. *NAFO SCR Doc.*, No. 01/178, Serial No. N4567.
- WIELAND, K. and P. KANNEWORFF. 2004. Revision of depth contours and stratification of the West Greenland Bottom Trawl Survey for Northern shrimp. Technical report No. 56, Greenland Institute of Natural Resources ([http://www.natur.gl/publikationer/tekniske\\_rapporter](http://www.natur.gl/publikationer/tekniske_rapporter)).
- WIELAND, K. and M. STORR-PAULSEN. 2006. Effect of tow duration on catch rates and mean length of Northern shrimp (*Pandalus borealis*) and Greenland halibut (*Reinhardtius hippoglossoides*) in the West Greenland Bottom Trawl Survey. *Fish. Res.* **78**: 276-285.

Table 1. *Pandalus borealis* in West Greenland: vessels, trawl types and rigging parameters used in the West Greenland Bottom Trawl Survey for shrimp and fish, 1988–2013

	Vessel	Trawl	Bridle length (m)	Wing-spread (m)	
1988	Elias Kleist	Skjervøy	59.9	23.1	*
1989	Sisimiut	“	81.1	17.9	*
1990	Maniitsoq	“	59.9	23.1	*
1991	Paamiut	“	75.1	28.3	**
1992–2003	“	“	60.1	20.1–25.2	**
2004	“	“	54.0	25.7	**
2005–2013	“	Cosmos	54.0	27.4–28.2	**

(\*: from tank experiments (Per Kanneworff, pers.com.), \*\*: average for all valid tows calculated from measures of door spread and approximate geometry of the trawl).

Table 2. *Pandalus borealis* in West Greenland: survey estimates of total biomass 2013.

Stratum	Area (km <sup>2</sup> )	Stations	Biomass density (t/km <sup>2</sup> )	Biomass (Kt)	Biomass error variance	Error coefft of variation (%)
C0-2	903	2	0.056	0.051	0.0020	88.9
C0-3	2179	2	0.166	0.361	0.0981	86.7
C0-4	1154					
Overall C0	4236	4	0.097	0.412	0.1001	76.8
I1-1	407	3	21.862	8.889	8.4527	32.7
I1-2	1963	4	16.491	32.373	48.5606	21.5
I1-3	2441	4	7.929	19.356	10.5789	16.8
I1-4	1499	2	3.521	5.277	2.1490	27.8
I2-1	419	3	4.261	1.787	0.6997	46.8
I2-2	815	2	10.601	8.640	3.8046	22.6
I2-3	1085	2	4.416	4.790	14.5603	79.7
I2-4	1338	2	0.198	0.265	0.0167	48.7
Overall I	9967	22	8.165	81.377	88.8225	11.6
U1-1	2486	3	1.870	4.650	15.4363	84.5
U1-2	4633	3	0.968	4.486	0.7154	18.9
U1-3	4785	3	0.987	4.724	0.7037	17.8
U1-4	5129	2	0.118	0.605	0.3661	100.0
U2-2	6710	2	1.135	7.614	0.1464	5.0
U2-3	8481	4	1.328	11.262	6.1521	22.0
U2-4	7994	4	0.002	0.014	0.0000	36.4
U3-1	2012	1	0.212	0.426	0.1635	95.0
U3-2	3017	2	4.574	13.797	23.3773	35.0
U3-3	1675	2	3.242	5.430	28.7524	98.8
U3-4	2710	3	0.397	1.077	0.0604	22.8
Overall U	49631	29	1.090	54.085	75.8737	16.1
W1-1	2873	3	1.106	3.178	0.5434	23.2
W1-2	6099	7	2.953	18.009	10.3367	17.9
W1-3	7520	7	1.282	9.638	8.4258	30.1

Stratum	Area (km <sup>2</sup> )	Stations	Biomass density (t/km <sup>2</sup> )	Biomass (Kt)	Biomass error variance	Error coefft of variation (%)
W1-4*	816	2	0.008	0.007	0.0000	100.0
W2-1	1674	2	0.570	0.954	0.1255	37.1
W2-2	2612	8	4.454	11.632	23.7225	41.9
W2-3	1741	2	4.633	8.067	63.4949	98.8
W2-4	915	1	0.151	0.138	0.0172	95.0
W3-1	2122	2	0.258	0.547	0.1013	58.2
W3-2	4725	18	2.272	10.737	36.8310	56.5
W3-3	2085	2	1.228	2.561	2.6179	63.2
W3-4	2994	4	0.687	2.056	3.0901	85.5
W4-1	4119	3	0.533	2.197	4.8250	100.0
W4-2	1818	5	3.438	6.251	38.5272	99.3
W4-3	821	2	15.446	12.686	159.0822	99.4
W4-4	1961	2	0.211	0.413	0.0128	27.3
W5-1	3001	2	0.010	0.031	0.0003	57.3
W5-2	3648	7	0.744	2.715	7.2727	99.3
W5-3	1950	2	1.918	3.740	13.9490	99.9
W5-4	3021	3	0.260	0.786	0.4815	88.3
W6-1	1206	2	0.000	0.000	0.0000	0.0
W6-2	2006	6	0.643	1.289	1.0645	80.1
W6-3	1585	2	0.000	0.000	0.0000	0.0
W6-4	1234	1	0.000	0.000	0.0000	0.0
W7-1	2442	4	0.000	0.000	0.0000	0.0
W7-2	891	5	0.030	0.027	0.0007	100.0
W7-3	265	2	0.002	0.001	0.0000	100.0
W7-4	317	2	0.000	0.000	0.0000	100.0
W8-1	424	2	0.002	0.001	0.0000	100.0
W8-2	567	5	0.002	0.001	0.0000	63.9
W8-3	405	2	0.136	0.055	0.0028	96.4
W8-4	718	2	0.260	0.186	0.0340	99.0
W9-1	1711	3	0.000	0.000	0.0000	0.0
W9-2	938	2	0.000	0.000	0.0000	100.0
W9-3	516	2	0.001	0.001	0.0000	73.9
W9-4	430	0	0.000	0.000	0.0000	0.0
Overall W	72169	126	1.357	97.901	374.5590	19.8
Survey totals	136003	181	1.719	233.775	539.3552	9.9

<sup>†</sup> strata with 1 trawled station have been assigned an error coefficient of variation of 95%

\* area C0-4 was not surveyed in 2013 because there was too much sea ice.



Table 3. *Pandalus borealis* in West Greenland: biomass estimates (Kt) for survey subdivisions and standard errors for the entire survey in 1988–2013.

Year	N1-9/ U1-3 <sup>1,5</sup>	C1-3/C0 <sup>1,6</sup>	W1-2	W3-4	W5-7 <sup>2</sup>	S/W8-9 <sup>1</sup>	D1-9/I1-2 <sup>3,1</sup>	Total	SE <sup>4</sup>
1988	22.6	9.5	55.1	85.5	17.7		39.2	229.7	24.7
1989	11.1	3.7	50.0	82.7	39.0		39.2	225.7	32.3
1990	11.0	9.1	78.6	53.9	23.5		39.2	215.3	32.6
1991	5.1	4.2	26.8	47.4	23.3		43.1	149.9	23.0
1992	18.1	22.2	46.2	30.6	45.8		41.4	204.4	32.5
1993	6.9	2.9	93.8	36.7	62.2		28.3	230.8	30.9
1994	6.6	6.0	95.0	44.5	32.6	16.7	34.0	235.4	51.7
1995	6.8	3.9	39.0	52.4	48.7	1.6	39.1	191.4	30.6
1996	8.8	1.5	46.4	31.5	80.0	3.3	44.3	215.9	40.4
1997	5.7	0.2	34.7	13.1	57.9	21.8	44.3	177.7	31.1
1998	7.0	0.4	37.8	100.6	45.1	18.6	51.8	261.2	57.6
1999	17.6	10.5	50.1	23.2	50.5	56.0	52.6	260.6	42.1
2000	8.4	10.7	62.1	69.8	71.0	21.8	73.0	316.9	40.3
2001	34.1	3.7	74.3	47.6	58.5	36.3	72.1	326.7	44.2
2002	17.4	5.4	114.0	62.1	94.9	40.5	85.8	420.2	60.0
2003	109.3	5.9	148.6	93.3	98.0	35.0	107.7	597.8	77.0
2004	111.2	3.5	152.8	96.5	102.6	15.4	81.4	563.4	103.7
2005	100.5	9.3	159.9	87.2	53.4	1.9	139.6	551.9	88.4
2006	54.7	45.8	108.9	60.6	92.2	12.5	110.7	484.0	65.1
2007	61.2	1.7	128.1	64.0	21.3	1.2	79.1	356.6	44.3
2008	91.7	16.7	61.3	40.0	20.9	0.7	50.8	282.1	28.3
2009	91.7	4.3	62.9	30.1	18.4	1.0	70.1	278.4	27.1
2010	73.1	3.0	89.6	65.3	13.5	0.9	99.3	344.7	44.6
2011	55.5	0.0	69.2	6.1	34.3	2.6	92.9	260.6	36.1
2012	33.5	0.0	33.8	7.0	23.1	0.4	92.5	190.3	20.6
2013	54.1	0.4	51.6	37.4	8.6	0.2	81.4	233.8	23.2

<sup>1</sup>: New stratification introduced in 2003 (regions N and S) and in 2004 (regions U, C and D)

<sup>2</sup>: Areas W6 and W7 were sampled from 1990 and 1993, respectively

<sup>3</sup>: D1-D9 1988-90 not sampled, but set to mean of 1991-1997.

<sup>4</sup>: Standard error calculated excluding D1-D9 in 1988-1990

<sup>5</sup>: Probably underestimated due to poor coverage of the northern part of the area N

<sup>6</sup>: Canada(C) in 2011 and 2012 was not sampled due to icecondition

Table 4. *Pandalus borealis* in West Greenland: error coefficients of variation (%) for the biomass estimates of five main survey regions and the entire survey area in 1988–2013.

Year	N1-9/ U1-3	C1-3/C0	W1-2	W3-4	W5-7	S/W8-9	D1-9/I1-2	Total survey	Number of hauls
1988	31.4	40.0	17.9	26.4	42.5	-	-	14.41	131
1989	22.2	42.8	23.9	33.2	35.0	-	-	18.60	130
1990	43.5	39.9	22.7	39.5	42.0	-	-	18.30	109
1991	40.2	27.1	21.2	30.4	30.6	-	22.9	13.37	194
1992	16.9	68.9	15.5	17.9	42.0	-	15.7	13.84	167
1993	51.6	53.3	14.6	28.0	28.5	-	19.4	11.66	157
1994	48.7	18.3	27.2	16.8	45.9	99.2	26.0	19.11	157
1995	47.1	44.7	20.0	22.6	36.3	74.0	17.7	13.93	163
1996	52.6	91.0	23.9	19.8	36.2	95.0	10.6	16.31	148
1997	37.9	61.9	15.8	20.2	43.1	14.6	14.5	15.26	167
1998	40.4	44.0	33.2	44.5	30.6	58.8	18.4	19.19	209
1999	51.1	80.0	13.1	14.8	27.7	52.1	14.2	14.08	227
2000	36.1	7.8	21.5	32.7	18.5	56.8	12.9	11.08	198
2001	26.5	44.5	24.9	45.0	25.6	22.8	18.6	11.77	224
2002	56.0	45.4	16.0	28.9	36.5	55.0	18.7	12.44	216
2003	26.8	44.4	17.5	16.0	34.9	49.9	17.5	11.21	172
2004	24.9	22.6	22.8	27.1	24.1	71.4	11.6	16.03	187
2005	17.4	97.3	22.8	38.0	50.4	48.7	34.6	16.02	194
2006	20.5	79.0	19.2	20.5	41.3	79.4	12.9	13.41	223
2007	21.9	45.1	19.8	32.6	8.8	56.8	20.8	12.43	223
2008	17.3	80.7	15.6	33.1	43.5	44.8	11.5	10.02	204
2009	22.1	59.6	12.8	18.7	39.0	53.0	15.9	9.72	247
2010	11.1	29.7	27.0	61.0	66.9	98.7	10.0	12.94	270
2011	9.8	-( <sup>1</sup> )	19.1	26.2	89.0	80.5	12.4	13.85	192
2012	16.0	-( <sup>1</sup> )	12.4	23.9	45.8	84.6	17.4	10.83	193
2013	16.1	76.8	21.1	41.8	55.6	78.6	11.6	9.93	181
Mean 1994-2013								13.48	

1: C (Canada) in 2011 and 2012 was not sampled

Table 5. *Pandalus borealis* in West Greenland: estimated mean densities (t/km<sup>2</sup>) for survey subdivisions in 1988–2013.

Year	N1-9/ U1-3	C1-3/C0	W1-2	W3-4	W5-7	S/W8-9	D1-9/I1-2
1988	0.54	2.77	2.34	3.94	1.76	-	-
1989	0.25	1.08	2.76	3.81	3.88	-	-
1990	0.25	2.65	3.33	2.48	1.59	-	-
1991	0.12	1.23	1.14	2.18	1.57	-	4.60
1992	0.44	6.46	1.96	1.41	3.09	-	4.42
1993	0.17	0.85	3.55	1.68	3.32	-	3.02
1994	0.17	1.76	3.59	2.03	1.74	3.22	3.63
1995	0.18	1.15	1.47	2.39	2.60	0.24	4.17
1996	0.23	0.44	1.75	1.44	4.27	0.51	4.73
1997	0.15	0.06	1.31	0.60	3.09	3.35	4.73
1998	0.18	0.11	1.43	4.59	2.41	2.85	5.54
1999	0.46	3.06	1.89	1.06	2.70	8.59	5.62
2000	0.22	3.10	2.35	3.18	3.79	3.35	7.80
2001	0.89	1.08	2.81	2.17	3.12	5.57	7.70
2002	0.45	1.57	4.31	4.46	5.07	6.21	9.16
2003	2.22	1.39	6.11	6.25	5.23	5.80	11.49
2004	2.20	0.82	6.25	4.71	4.76	2.65	8.37
2005	1.99	2.20	6.54	4.25	2.48	0.34	14.19
2006	1.08	10.81	4.46	2.96	4.28	2.20	11.26
2007	1.21	0.40	5.24	3.12	0.99	0.21	8.04
2008	1.85	3.94	2.53	1.94	0.97	0.13	5.09
2009	1.85	1.01	2.59	1.46	0.85	0.17	7.03
2010	1.47	0.70	3.70	3.16	0.63	0.16	9.96
2011	1.12	-	2.95	0.30	1.59	0.46	9.32
2012	0.67	-	1.40	0.34	1.07	0.07	9.28
2013	1.09	0.10	2.13	1.81	0.40	0.04	8.16

Table 6. *Pandalus borealis* in West Greenland: estimated numbers (billions) by sex in 1988–2013.

Year	Juv. & Males	Females	Total	Juv. & Males %	Females %
1988 <sup>1</sup>	26.8	9.3	36.1	74.3	25.7
1989 <sup>1</sup>	39.0	6.9	45.9	85.0	15.0
1990 <sup>1</sup>	29.3	8.9	38.1	76.8	23.2
1991	19.6	5.1	24.7	79.3	20.7
1992	29.4	6.5	35.9	81.9	18.1
1993	34.8	8.3	43.1	80.7	19.3
1994	32.0	8.9	40.9	78.3	21.7
1995	27.7	6.5	34.2	80.9	19.1
1996	38.2	6.6	44.8	85.2	14.8
1997	27.2	6.3	33.5	81.2	18.8
1998	41.0	9.9	50.9	80.5	19.5
1999	42.5	9.9	52.3	81.1	18.9
2000	62.4	11.1	73.4	84.9	15.1
2001	56.6	11.8	68.4	82.7	17.3
2002	85.3	14.9	100.1	85.1	14.9
2003	99.4	24.9	124.4	80.0	20.0
2004	89.4	26.3	115.8	77.3	22.7
2005	94.5	25.1	119.6	79.0	21.0
2006	78.3	24.6	102.9	76.1	23.9
2007	55.1	16.0	71.1	77.4	22.6
2008	42.4	11.8	54.2	78.2	21.8
2009	41.3	12.0	53.3	77.4	22.6
2010	52.9	13.5	66.3	79.7	20.3
2011 <sup>2</sup>	36.8	13.0	49.8	74.0	26.0
2012 <sup>2</sup>	28.8	8.7	37.4	77.0	23.2
2013 <sup>3</sup>	31.1	12.0	43.1	72.2	27.8
Average	47.8	12.3	60.0	79.5	20.5

<sup>1</sup> mean values for Disko Bay and Vaigat in 1991–1997 have been inserted for 1988–1990, and included in the calculation of the average.

<sup>2</sup> area C0 was not surveyed in 2011 or 2012 owing to sea ice; no correction has been made.

<sup>3</sup> Sub-strata C0-4 was not surveyed in 2013 owing to sea ice; and sub-strata W9-4 due to poor bottom conditions.

Table 7. *Pandalus borealis* in West Greenland: biomass estimates ('000 t) by sex based on length-weight distributions from the West Greenland shrimp survey in 1988–2013.

Year	Juv. & Males	Females	Total	Juv. & Males %	Females %
1988 <sup>1</sup>	134.7	94.8	229.5	58.7	41.3
1989 <sup>1</sup>	157.1	68.6	225.7	69.6	30.4
1990 <sup>1</sup>	129.4	85.4	214.9	60.2	39.8
1991	100.5	49.4	149.9	67.0	33.0
1992	141.3	63.1	204.4	69.1	30.9
1993	149.2	81.9	231.1	64.6	35.4
1994	146.5	88.9	235.4	62.2	37.8
1995	124.5	66.9	191.4	65.0	35.0
1996	147.9	68.0	215.9	68.5	31.5
1997	114.7	62.9	177.7	64.6	35.4
1998	170.4	90.9	261.3	65.2	34.8
1999	166.7	93.9	260.6	64.0	36.0
2000	213.8	100.2	314.0	68.1	31.9
2001	199.1	108.3	307.4	64.8	35.2
2002	293.6	126.6	420.2	69.9	30.1
2003	389.2	208.6	597.8	65.1	34.9
2004	353.1	210.3	563.4	62.7	37.3
2005 <sup>2</sup>	355.2	196.7	551.9	64.4	35.6
2006 <sup>2</sup>	297.4	188.0	485.4	61.3	38.7
2007 <sup>2</sup>	227.8	128.7	356.6	63.9	36.1
2008 <sup>2</sup>	182.6	99.5	282.1	64.7	35.3
2009 <sup>2</sup>	173.5	105.0	278.4	62.3	37.7
2010 <sup>2</sup>	222.3	122.4	344.7	64.5	35.5
2011	148.5	112.0	260.6	57.0	43.0
2012	115.4	74.9	190.3	60.7	39.3
2013	129.9	103.9	233.8	55.6	44.4
Average	194.2	107.8	302.0	64.3	35.7

<sup>1</sup> 1991–1997 mean values for Disko Bay and Vaigat have been used for 1988–1990, and included in the calculation of the average.

<sup>2</sup> data for 2005–2010 was re-analysed in 2011.

Table 8. *Pandalus borealis* in West Greenland: estimates of fishable biomass ( $\geq 17$ mm CL; '000 t) from the West Greenland shrimp survey in 1988–2013.

Year	Offshore fishable		Disko fishable		Overall fishable	
	biomass	%	biomass	%	biomass	%
1988	186.2		37.0		223.2	
1989	171.9		37.0		209.0	
1990	170.0		37.0		207.0	
1991	104.7	98%	41.3	96%	146.0	97%
1992	154.8	95%	39.4	95%	194.2	95%
1993	189.4	94%	27.1	96%	216.5	94%
1994	191.0	95%	32.1	94%	223.1	95%
1995	144.9	95%	38.3	98%	183.2	96%
1996	150.6	88%	41.5	94%	192.1	89%
1997	127.7	96%	39.4	89%	167.1	94%
1998	197.2	94%	47.1	91%	244.3	94%
1999	195.0	94%	42.3	80%	237.3	91%
2000	219.8	90%	60.6	83%	280.3	88%
2001	216.8	85%	63.7	88%	280.5	86%
2002	302.2	90%	67.2	78%	369.5	88%
2003	454.0	93%	94.3	88%	548.3	92%
2004	457.5	95%	70.8	87%	528.3	94%
2005	381.8	93%	112.3	80%	494.2	90%
2006	358.6	96%	92.4	83%	451.0	93%
2007	264.7	95%	71.3	90%	336.1	94%
2008	216.8	94%	45.8	90%	262.6	93%
2009	192.2	92%	62.8	90%	255.1	92%
2010	229.8	94%	88.9	90%	318.7	92%
2011	155.9	93%	83.1	89%	239.0	92%
2012	89.5	91%	83.9	91%	173.3	91%
2013	143.6	94%	74.6	92%	218.1	93%
Average	217.9	93%	58.9	89%	276.8	92%

<sup>1</sup> 1991–1997 mean values for Disko Bay and Vaigat have been used for 1988–1990, and included in the calculation of the average.

<sup>2</sup> data for 2005–2010 was re-analysed in 2011.

<sup>3</sup> area C0 was not surveyed in 2011 or 2012, nor substratum W1-4 in 2011, owing to sea ice;.

Table 9a. *Pandalus borealis* in West Greenland: mean carapace length (mm) at age 2 in 1993–2006, with standard deviations and coefficients of variation (- : not present, ( ) : fixed in the final MIX.run).

Mean:							
			Region / Depth				
	U1 to U3	I1 and I2	C0 and W1 to W4		W5 and W6		W7 to W9
Year	150-600 m	150-600 m	150-300 m	300-600 m	150-300 m	300-600 m	150-600 m
1993	11.1	12.6	12.1	13.2	14.8	13.6	(14.0)
1994	12.4	11.6	12.3	13.1	14.8	13.7	-
1995	11.2	12.5	13.5	14.3	15.3	13.1	(12.5)
1996	11.9	13.0	14.2	14.0	13.7	14.9	(14.0)
1997	12.6	12.9	14.3	12.4	14.7	13.5	(13.0)
1998	11.0	14.0	14.0	14.9	15.8	16.4	(15.0)
1999	14.7	15.4	15.1	15.0	15.4	16.1	(15.5)
2000	13.3	14.9	15.0	15.0	14.8	16.7	(13.0)
2001	13.6	13.1	13.2	13.8	13.8	14.0	(13.5)
2002	13.1	12.6	12.8	12.6	14.9	15.3	(13.5)
2003	11.9	12.2	13.0	12.9	14.4	13.8	14.6
2004	11.9	11.6	12.3	13.0	14.3	(15.5)	(14.5)
2005	11.1	11.4	12.0	11.9	13.2	12.5	(16.0)
2006	11.8	11.3	11.8	12.3	12.9	14.0	(14.8)
Standard deviation:							
	U1 to U3	I1 and I2	C0 and W1 to W4		W5 and W6		W7 to W9
Year	150-600 m	150-600 m	150-300 m	300-600 m	150-300 m	300-600 m	150-600 m
1993	0.79	1.32	1.03	1.08	0.84	0.87	(0.80)
1994	(0.70)	1.04	1.17	1.20	1.09	1.54	-
1995	0.81	1.03	1.40	1.45	0.81	1.48	(0.70)
1996	0.79	1.09	0.91	1.23	1.48	1.29	(0.70)
1997	1.04	1.13	1.18	1.17	1.31	1.43	(0.70)
1998	1.07	1.40	1.03	1.35	1.31	1.10	(0.80)
1999	1.46	1.40	1.24	1.39	1.35	1.32	(0.70)
2000	1.30	1.39	1.26	1.44	1.46	1.26	(0.80)
2001	1.35	1.32	1.38	1.46	1.13	(0.80)	(0.70)
2002	1.33	1.49	1.37	1.46	1.52	(0.90)	(0.70)
2003	0.98	1.26	1.20	1.50	1.19	1.25	(0.90)
2004	1.05	1.01	1.14	1.49	1.27	(0.70)	(0.90)
2005	0.71	0.96	0.73	1.38	1.05	0.90	(0.85)
2006	1.14	1.28	1.11	1.15	1.17	(0.90)	(0.85)
Coefficient of variation:							
	U1 to U3	I1 and I2	C0 and W1 to W4		W5 and W6		W7 to W9
Year	150-600 m	150-600 m	150-300 m	300-600 m	150-300 m	300-600 m	150-600 m
1993	0.07	0.10	0.08	0.08	0.06	0.06	(0.05)
1994	(0.06)	0.09	0.10	0.09	0.07	0.11	-
1995	0.07	0.08	0.10	0.10	0.05	0.11	(0.05)
1996	0.07	0.08	0.06	0.09	0.11	0.09	(0.05)
1997	0.08	0.09	0.08	0.09	0.09	0.11	(0.05)
1998	0.10	0.10	0.07	0.08	0.08	0.07	(0.05)
1999	0.10	0.09	0.08	0.09	0.09	0.08	(0.05)
2000	0.10	0.09	0.08	0.10	0.10	0.08	(0.07)
2001	0.10	0.10	0.10	0.11	0.08	(0.06)	(0.05)
2002	0.10	0.12	0.11	0.12	0.10	(0.06)	(0.05)
2003	0.08	0.10	0.09	0.12	0.08	0.09	(0.06)
2004	0.09	0.09	0.09	0.11	0.09	(0.05)	(0.06)
2005	0.06	0.08	0.06	0.12	0.08	0.07	(0.05)
2006	0.10	0.11	0.09	0.09	0.09	(0.06)	(0.06)

Table 9b. *Pandalus borealis* in West Greenland: mean carapace length (mm) at age 2 in 2007–2013, with standard deviations and coefficients of variation (- : not present, ( ): fixed in the final CMIX run, na: no data).

Mean:

Year	Region / Strata					
	U1-U3 150-600 m	I1+I2 150-600 m	C0 200-600 m	W1-W4 150-600 m	W5+W6 150-600 m	W7-W9 150-600 m
2007	12.7	12.0	12.7	12.5	12.8	-
2008	13.0	12.4	13.1	12.3	11.8	-
2009	12.4	12.2	-	12.5	12.5	-
2010	11.3	12.0	13.1	13.3	-	-
2011	12.2	11.5	na	12.1	13.0	-
2012	11.8	11.5	na	12.1	13.3	-
2013	11.7	12.5	-	13.5	-	-

Standard deviation:

Year	Region / Strata					
	U1-U3 150-600 m	I1+I2 150-600 m	C0 200-600 m	W1-W4 150-600 m	W5+W6 150-600 m	W7-W9 150-600 m
2007	1.44	1.25	1.05	1.35	1.02	-
2008	1.30	1.16	1.13	1.24	0.83	-
2009	1.18	1.45	-	1.14	(1.45)	-
2010	1.20	1.17	1.09	1.18	-	-
2011	1.50	1.01	na	1.24	1.30	-
2012	1.22	1.23	na	1.03	1.12	-
2013	0.95	1.05	-	1.06	-	-

Coefficient of variation:

Year	Region / Strata					
	U1-U3 150-600 m	I1+I2 150-600 m	C0 200-600 m	W1-W4 150-600 m	W5+W6 150-600 m	W7-W9 150-600 m
2007	0.11	0.10	0.08	0.11	0.08	-
2008	0.10	0.09	0.09	0.10	0.07	-
2009	0.09	0.12	-	0.09	(0.12)	-
2010	0.11	0.10	0.08	0.09	-	-
2011	0.12	0.09	na	0.10	0.10	-
2012	0.10	0.11	na	0.09	0.08	-
2013	0.08	0.08	na	0.08	-	-



Table 10. *Pandalus borealis* in West Greenland: survey estimate of numbers (billions) at age 2 years, 1993–2013.

Year	U1 to U3	I1 and I2	C0 and W1 to W4		W5 and W6	W7 to W9	Total
1993	0.06	0.08	2.60		1.54	0.00	4.28
1994 <sup>1</sup>	0.01	0.21	1.51		1.20	0.00	2.92
1995 <sup>1</sup>	0.02	0.11	0.82		1.37	0.00	2.32
1996 <sup>1</sup>	0.11	1.25	2.45		6.20	0.00	10.01
1997 <sup>1</sup>	0.05	1.37	0.52		1.27	0.00	3.22
1998 <sup>1</sup>	0.04	1.79	2.01		2.60	0.00	6.44
1999 <sup>1</sup>	0.42	5.06	2.66		3.22	0.00	11.36
2000 <sup>1</sup>	0.33	5.54	4.92		3.50	0.01	14.29
2001 <sup>1</sup>	1.66	5.44	7.79		1.01	0.01	15.90
2002 <sup>1</sup>	0.02	3.98	3.41		2.97	0.04	10.42
2003 <sup>1</sup>	0.76	1.11	1.70		2.88	0.03	6.48
2004 <sup>1</sup>	0.64	3.39	2.24		0.47	0.01	6.75
2005	0.31	2.50	0.58		0.05	0.00	3.45
2006	0.27	1.97	1.54		0.68	0.04	4.50
2007	0.08	1.04	0.00	0.84	0.31	0.00	2.27
2008	2.61	1.60	0.04	0.76	0.40	0.00	5.41
2009	1.94	2.12	0.00	0.93	0.20	0.00	5.18
2010	1.10	2.11	0.01	2.05	0.00	0.00	5.27
2011 <sup>2</sup>	0.70	2.44	0.01	0.42	0.03	0.00	3.59
2012 <sup>2</sup>	0.34	1.33	0.01	0.17	0.23	0.00	2.08
2013	0.48	1.11	0.00	1.52	0.00	0.00	3.11
Average:	0.57	2.17	1.98		1.43	0.01	6.15

<sup>1</sup> data for 1993 to 2004 has been converted from Skervøy to Cosmos trawl;<sup>2</sup> for area C0 in 2011 and 2012, when it was not surveyed, the average value from 2007 to 2010 has been used.

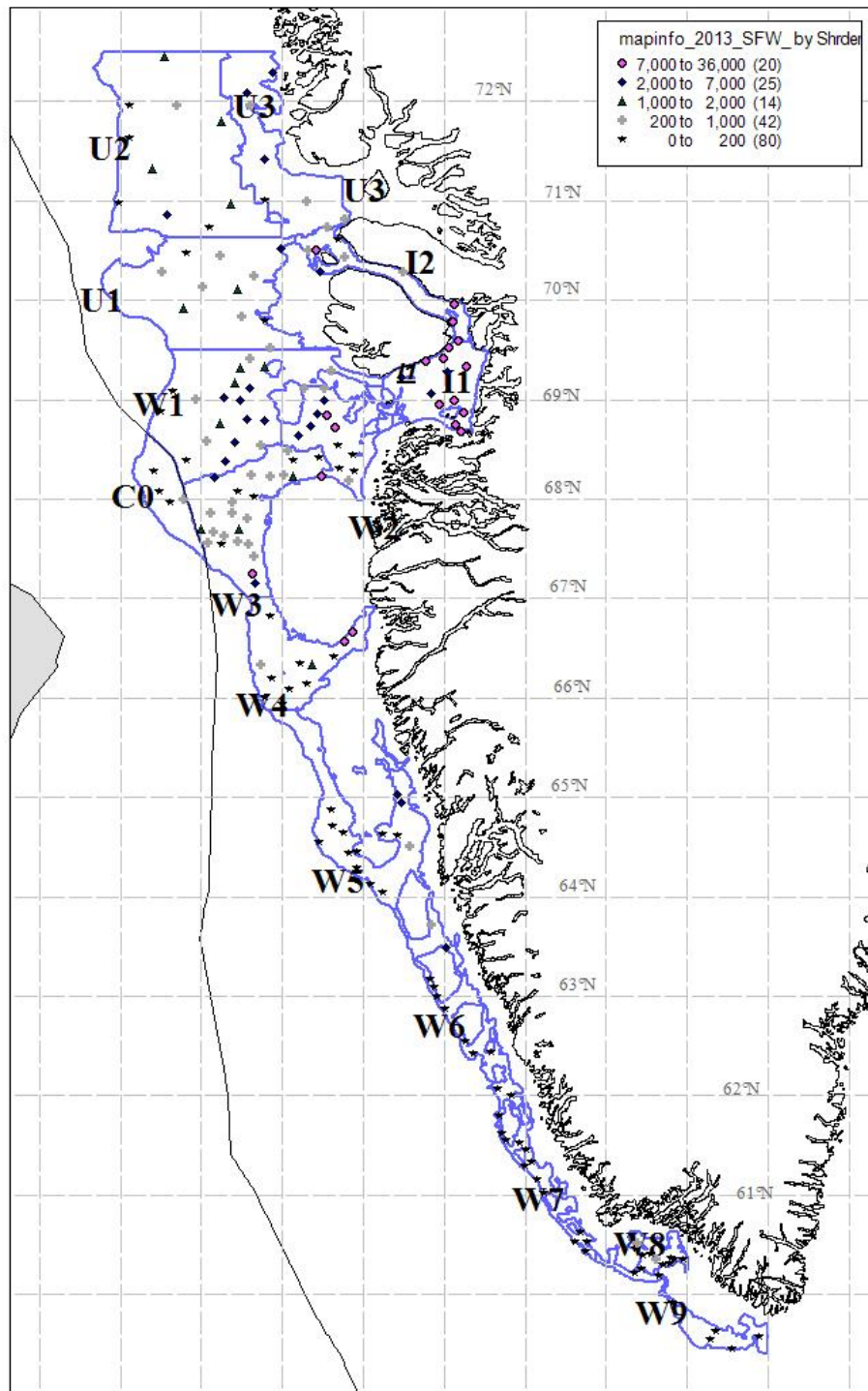


Figure 1. *Pandalus borealis* in West Greenland: density distribution from 181 trawl-survey stations in 2013. Sub-strata C0-4 could not be surveyed in 2013 because there was too much sea ice there.

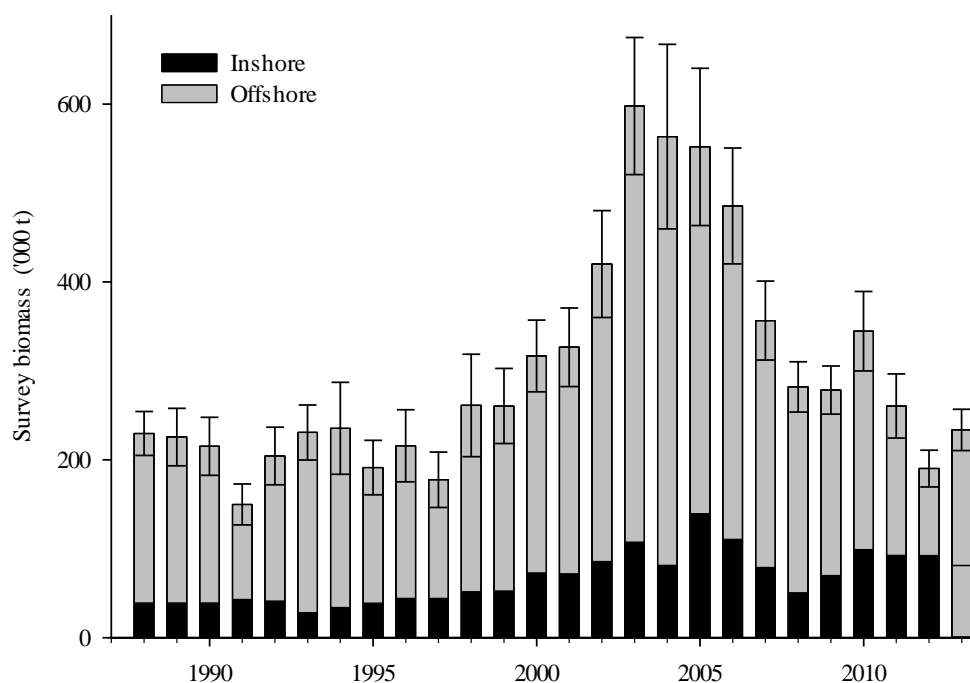


Figure 2a . *Pandalus borealis* in West Greenland: estimated survey biomass, 1988–2013. Area C0-4 was not surveyed in 2013, because of the sea and W9-4 due to poor bottom conditions.

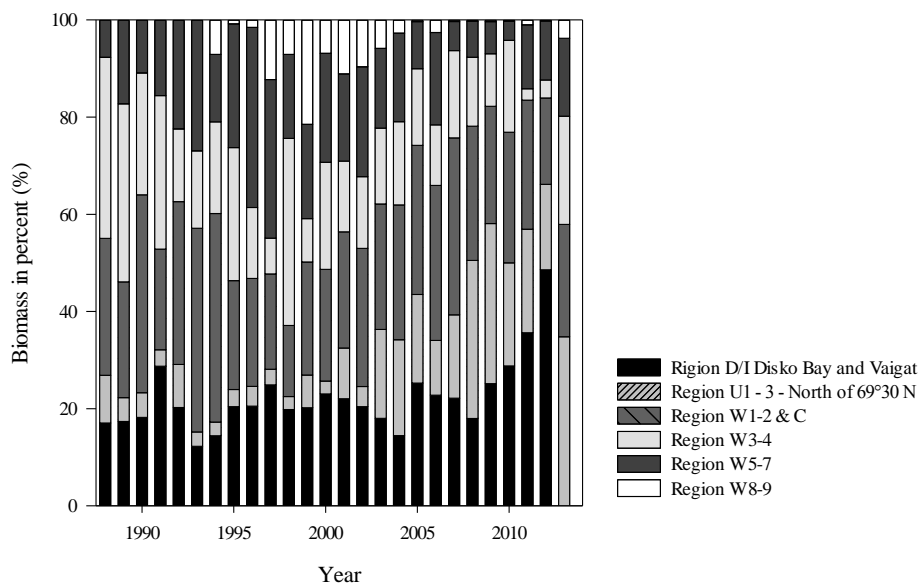


Figure 2 b. *Pandalus borealis* in West Greenland: distribution of survey biomass between major survey regions, 1991 – 2013. Area C0 could not be surveyed in 2011 and 2012 because of sea ice in the strata.

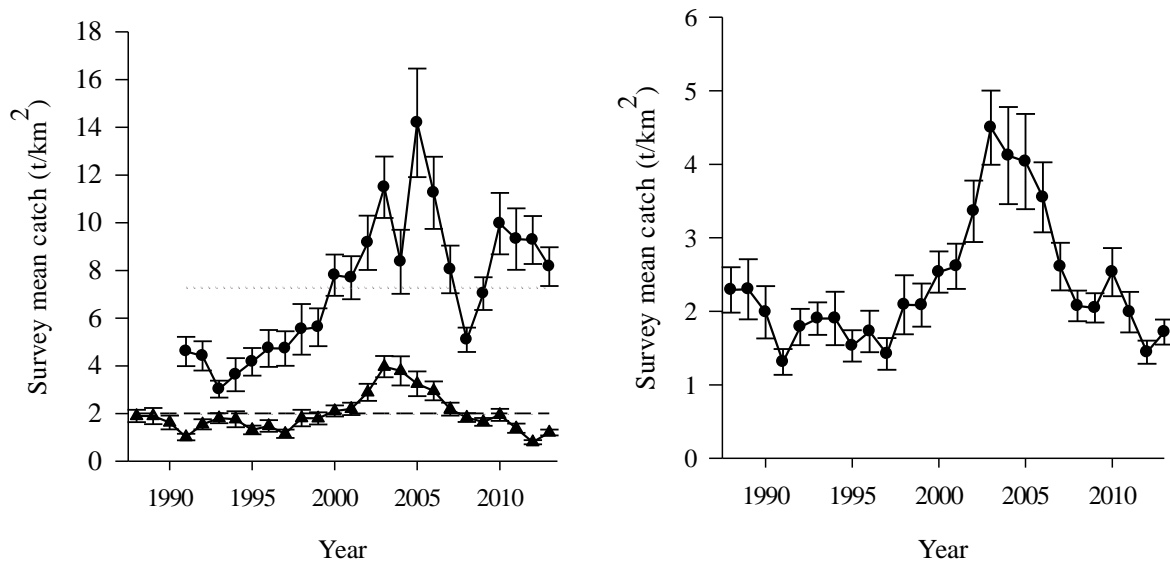


Figure 3 *Pandalus borealis* in West Greenland: mean survey density of Northern shrimp in a) -●- Disko Bay and Vaigat (since 1991 7–8% of the survey area), -▲-offshore (92–93%) and b) total surveyed regions .

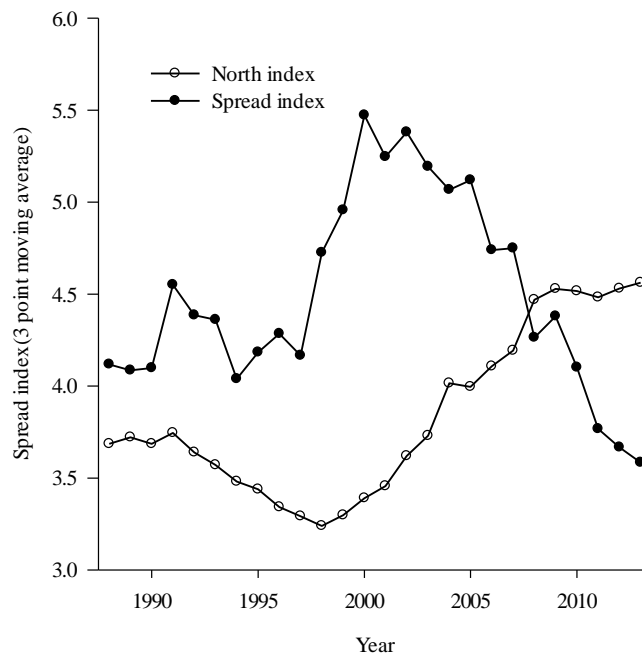


Figure 4. *Pandalus borealis* in West Greenland: indices of distribution and location of shrimp biomass in the West Greenland trawl survey 1994–2013 (3-point moving averages). -○-: North index (3-pt moving average) and -●-: Spread index (3-pt moving average).

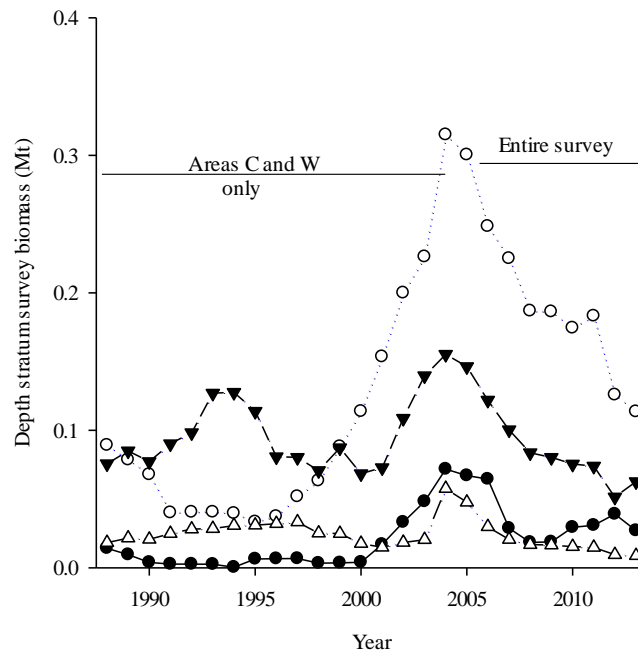


Figure 5a. *Pandalus borealis* in West Greenland: survey biomass estimates by depth stratum, 1988–2012. 3-point moving averages.; Until 2003, only areas C and W were substratified by depth. -●-: 150 – 200m, -○-: 200-300m, -▼-: 300-400 and -Δ-: 400-600m.

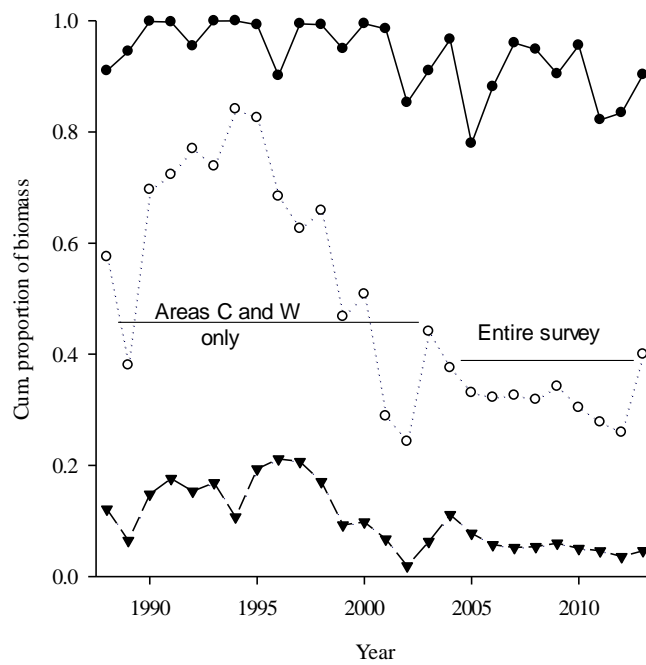


Fig. 5b. *Pandalus borealis* in West Greenland: distribution of survey biomass between 150 and 600 m by depth, 1988–2013. Until 2003, only areas C and W were substratified by depth. -●-: 150 – 200 m, -○-: 300 m and -▼-400 m

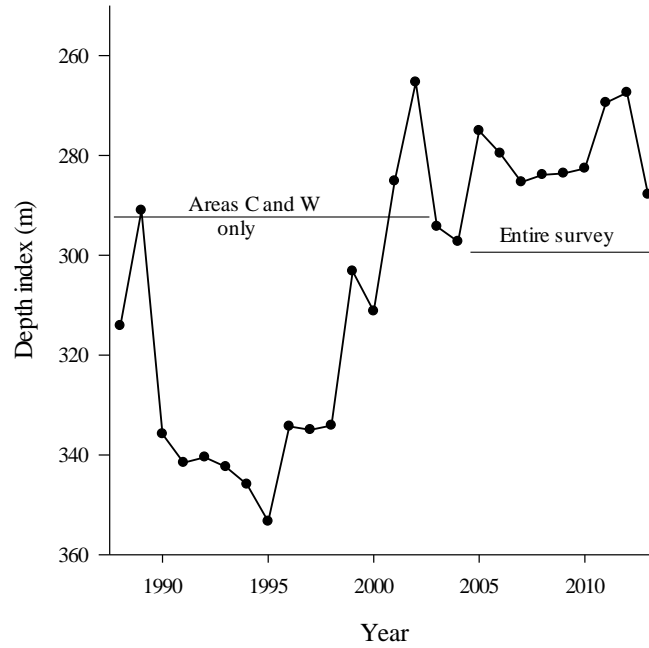


Figure 5c. *Pandalus borealis* in West Greenland: depth index for survey biomass, 1988–2013. Until 2003, only areas C and W were substratified by depth.

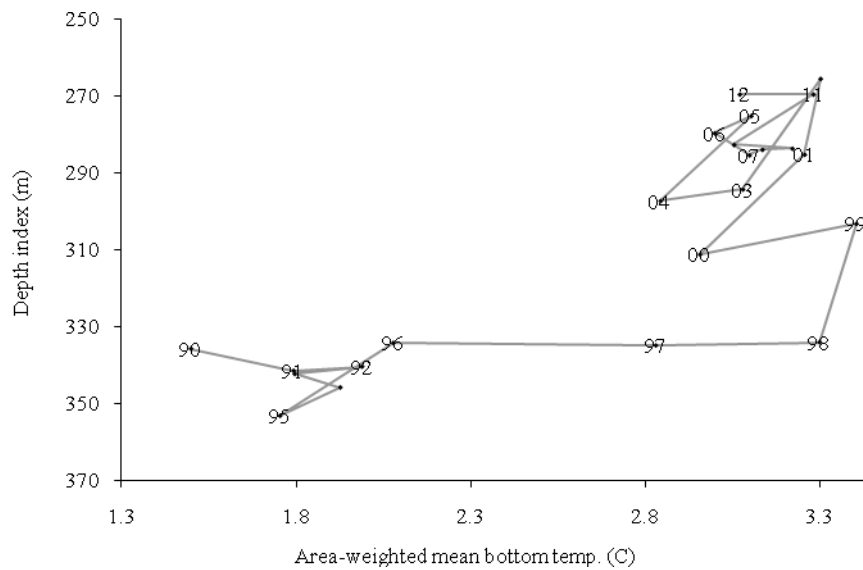


Figure 6. *Pandalus borealis* in West Greenland: depth index of survey biomass vs. area-weighted mean bottom temperature from survey trawl-door measurements, 1990–2012.

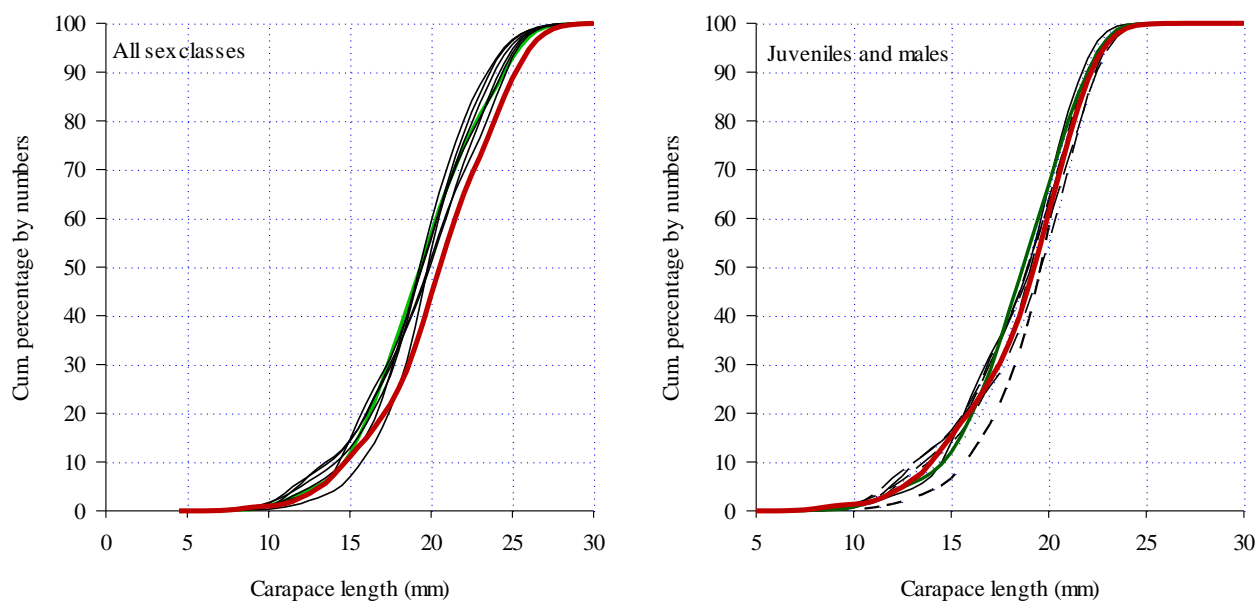


Figure 7: *Pandalus borealis* in West Greenland: distribution of lengths from survey length analyses in 2005–2011 (black lines) and in 2012 (green line) – 2013 (red line).

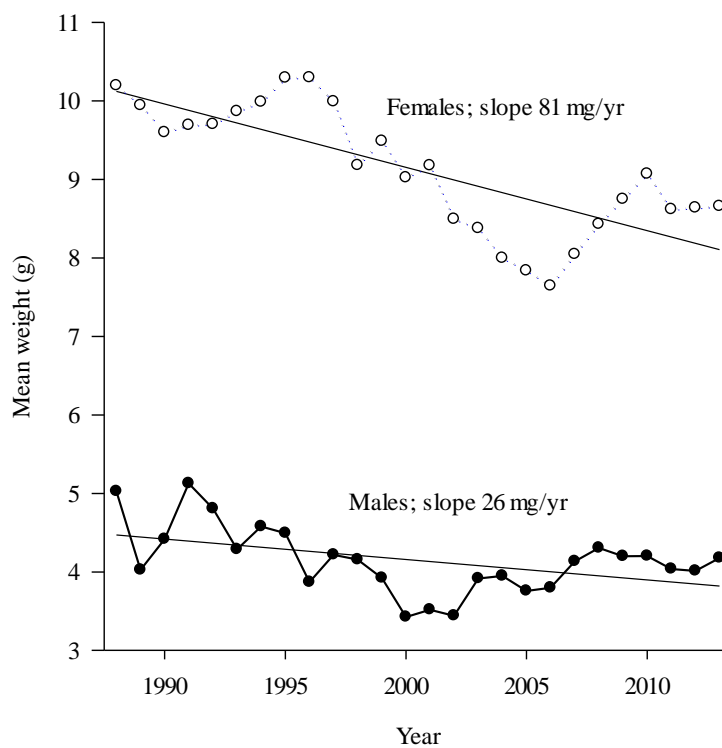


Figure 8: *Pandalus borealis* in West Greenland: mean weight, by sex, from survey data, 1988–2013.

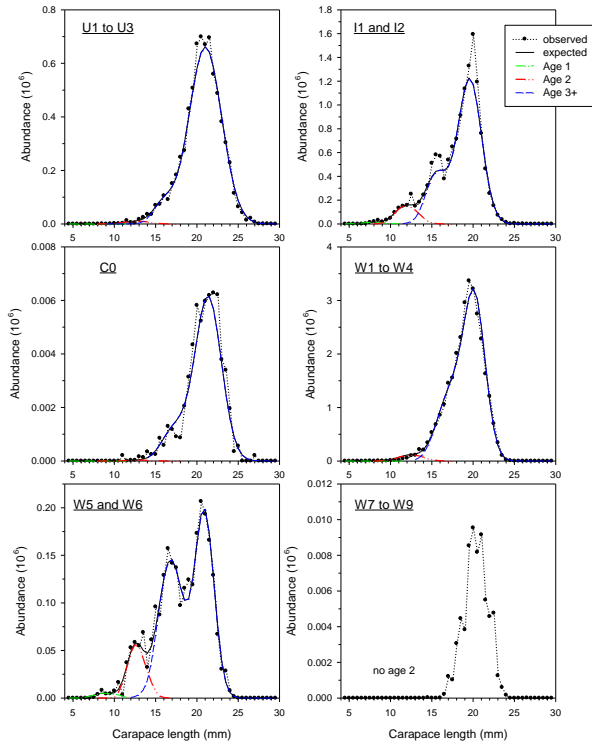


Figure 9a. *Pandalus borealis* in West Greenland: regional length frequencies in 2007

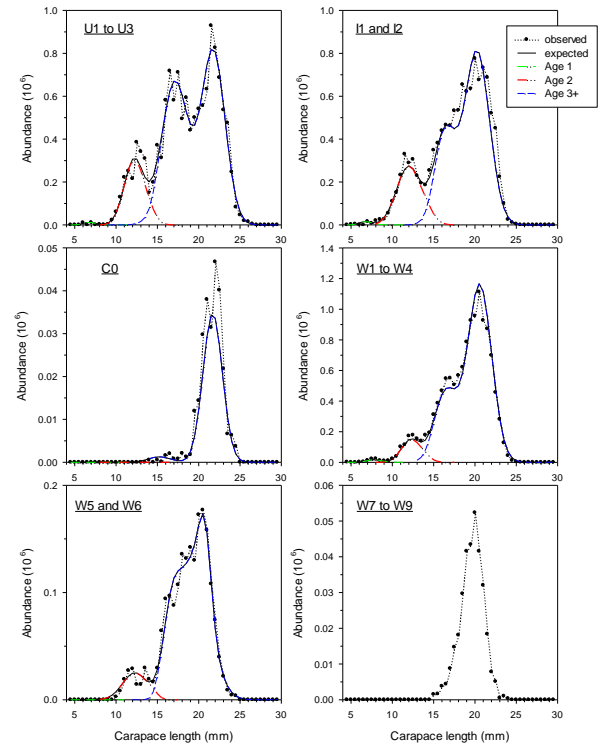


Figure 9c. *Pandalus borealis* in West Greenland: regional length frequencies in 2009.

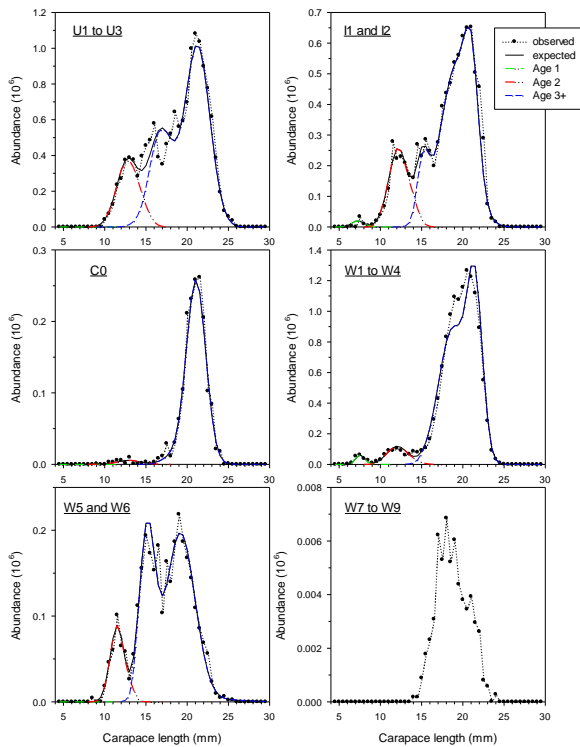


Figure 9b. *Pandalus borealis* in West Greenland: regional length frequencies in 2008.

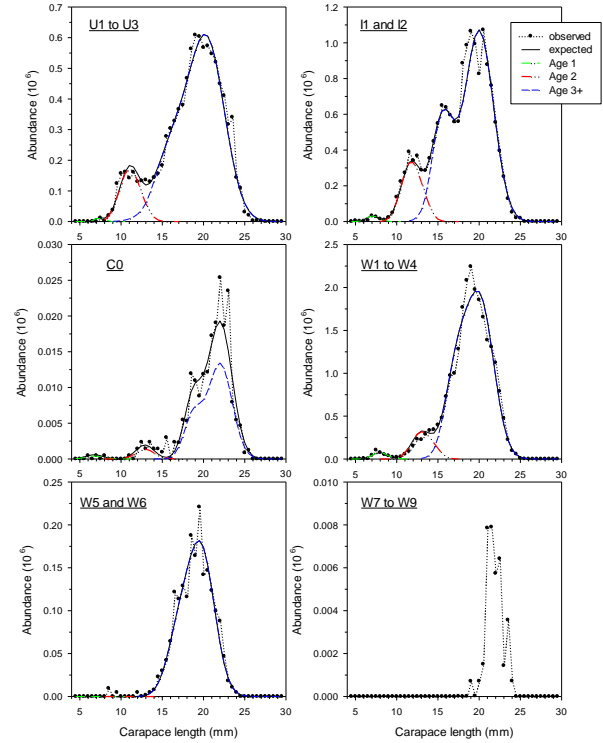


Figure 9d. *Pandalus borealis* in West Greenland: regional length frequencies in 2010.



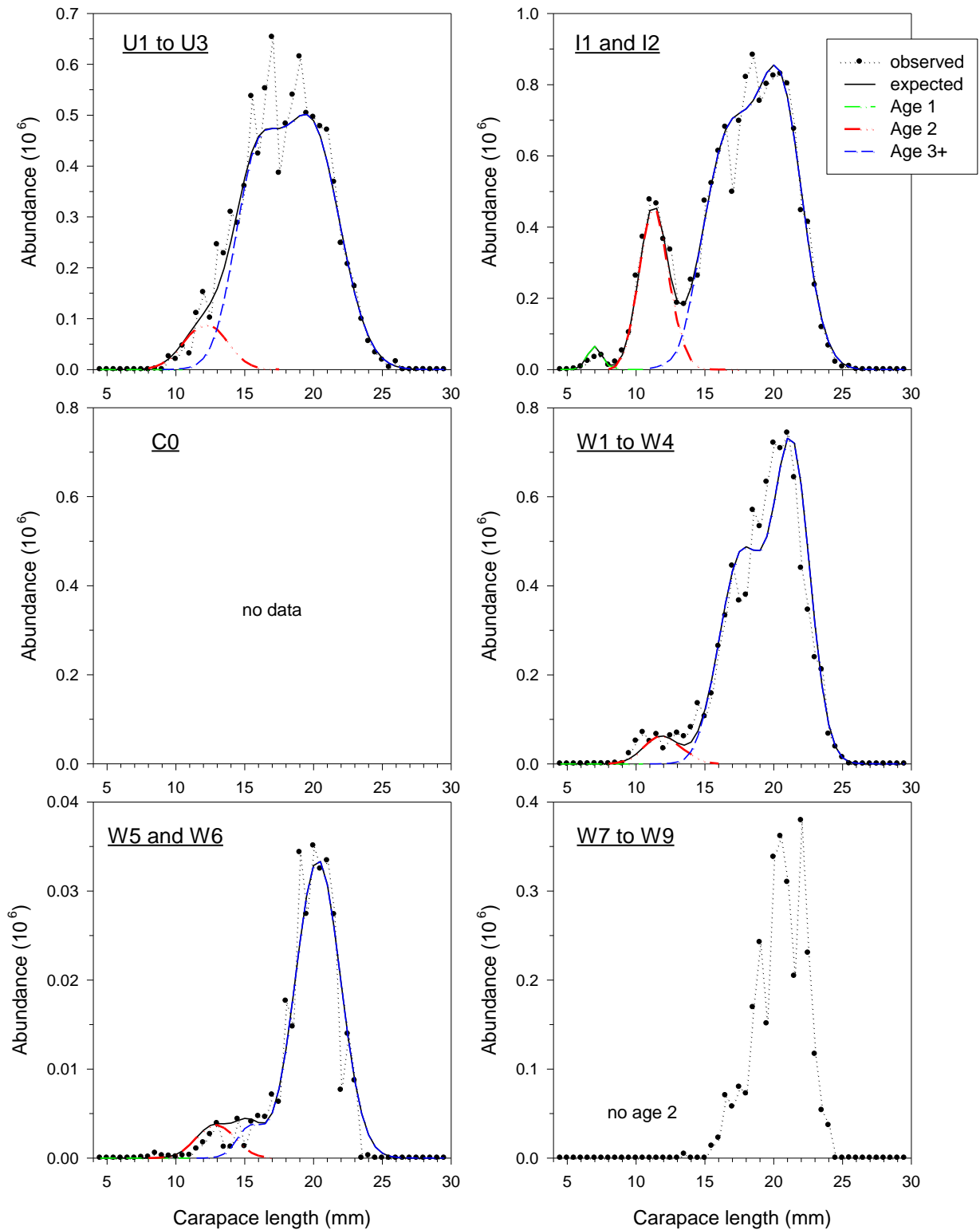


Figure 9e. *Pandalus borealis* in West Greenland: regional length frequencies in 2011. (Area C0 was not surveyed owing to ice).

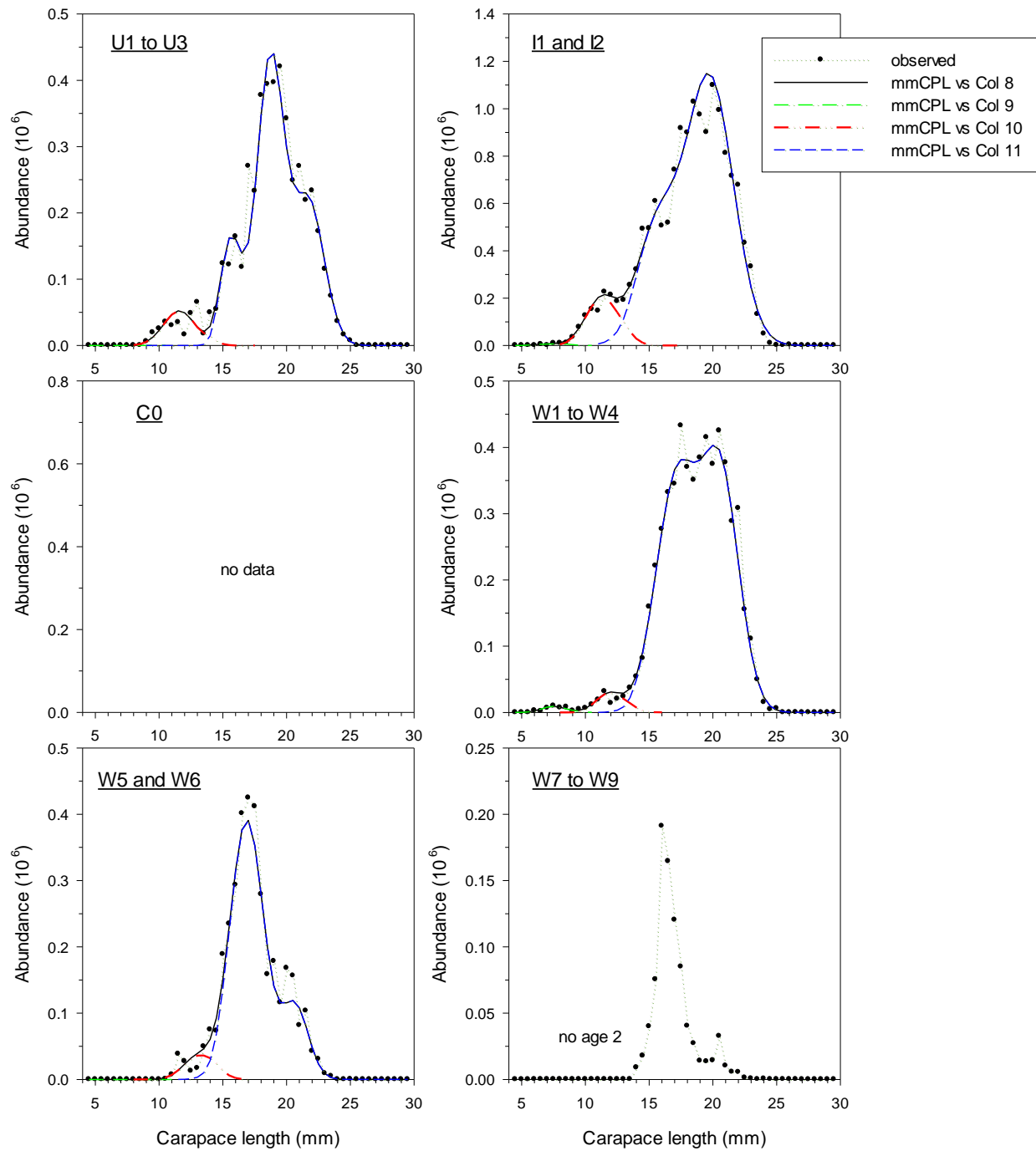


Figure 9f. *Pandalus borealis* in West Greenland: regional length frequencies in 2012. (Area C0 was not surveyed owing to ice).

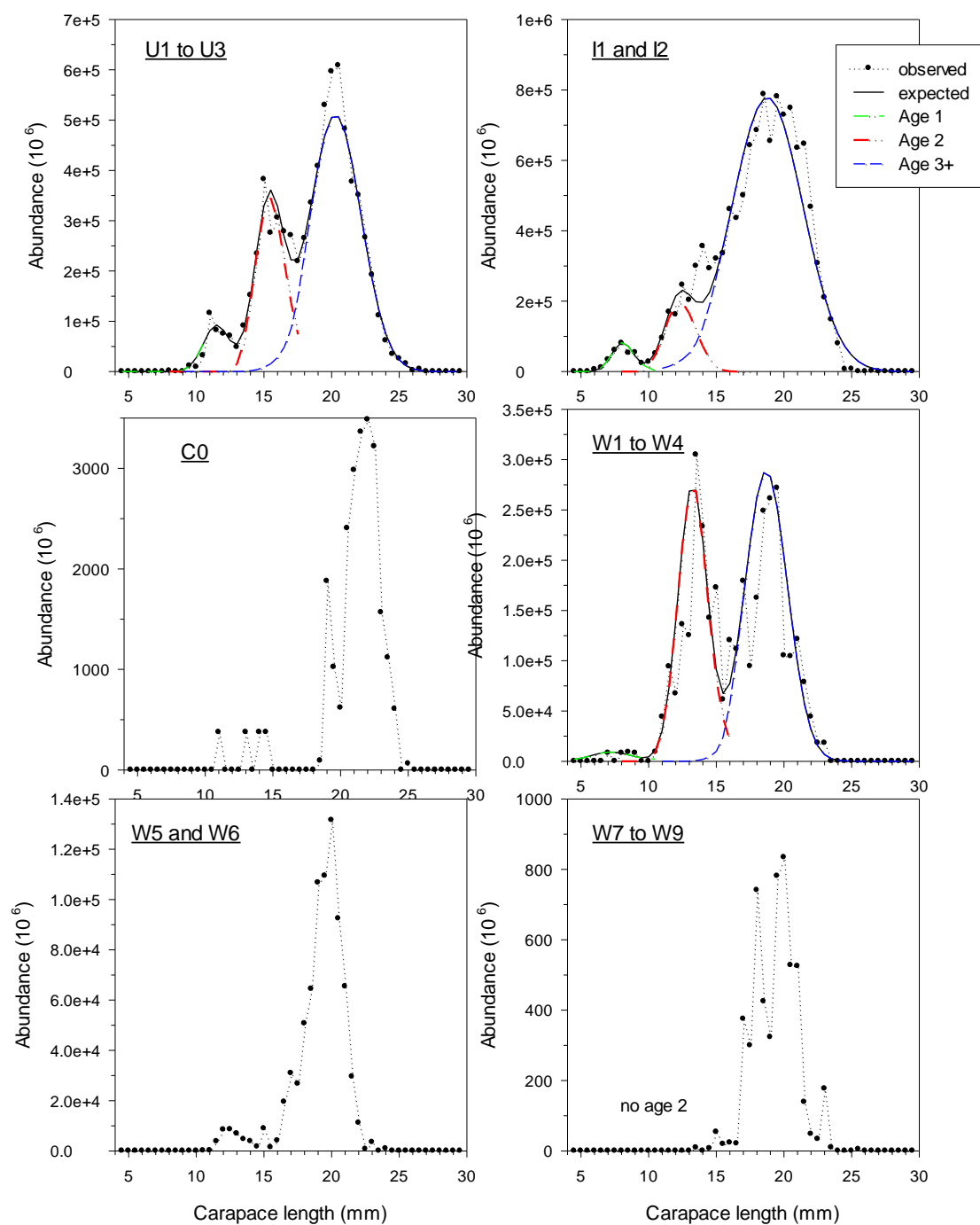


Figure 9g. *Pandalus borealis* in West Greenland: regional length frequencies in 2013.

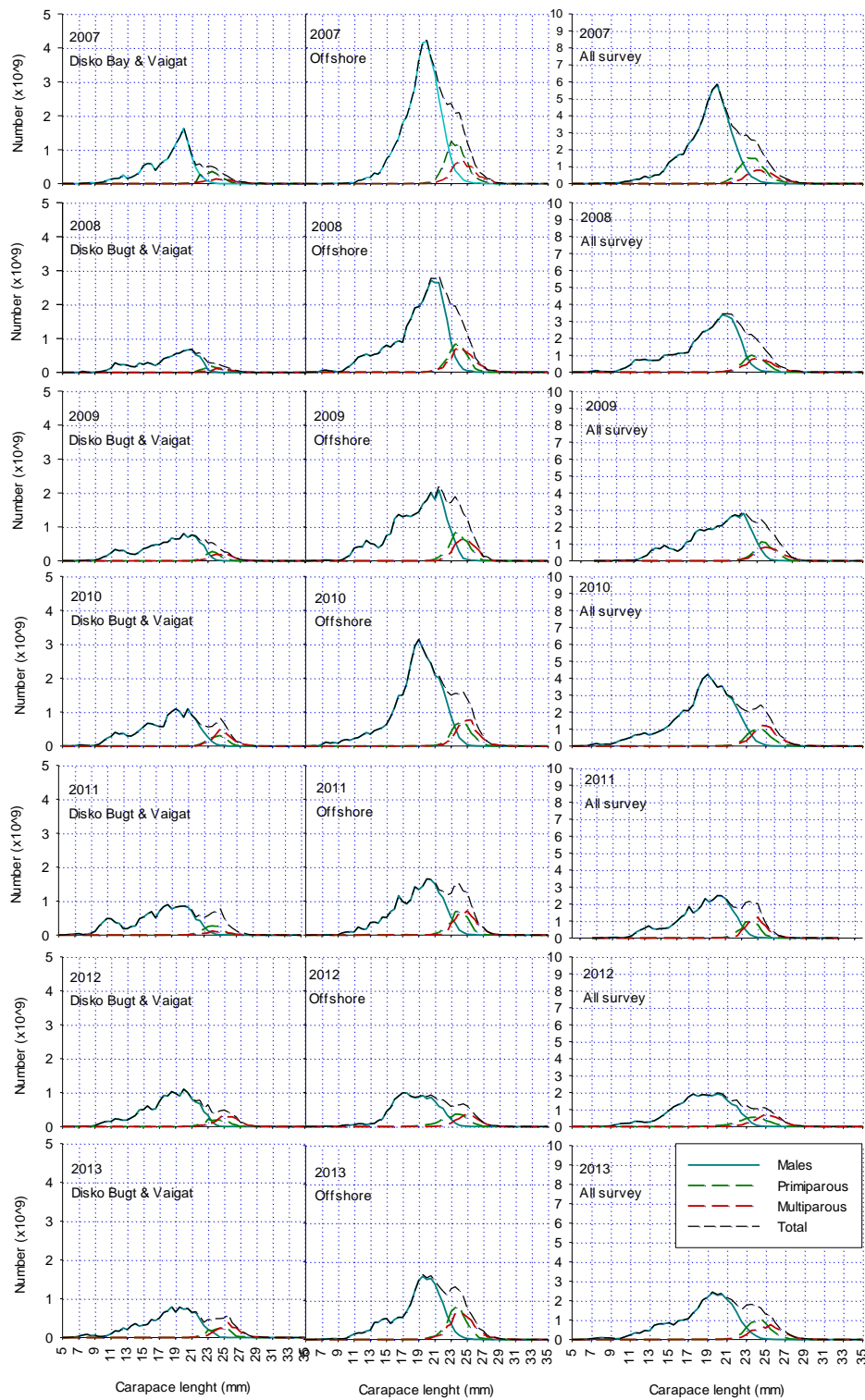


Figure 10. *Pandalus borealis* in West Greenland: length frequencies offshore, in Disko Bay and Vaigat, and overall, 2007–2013.

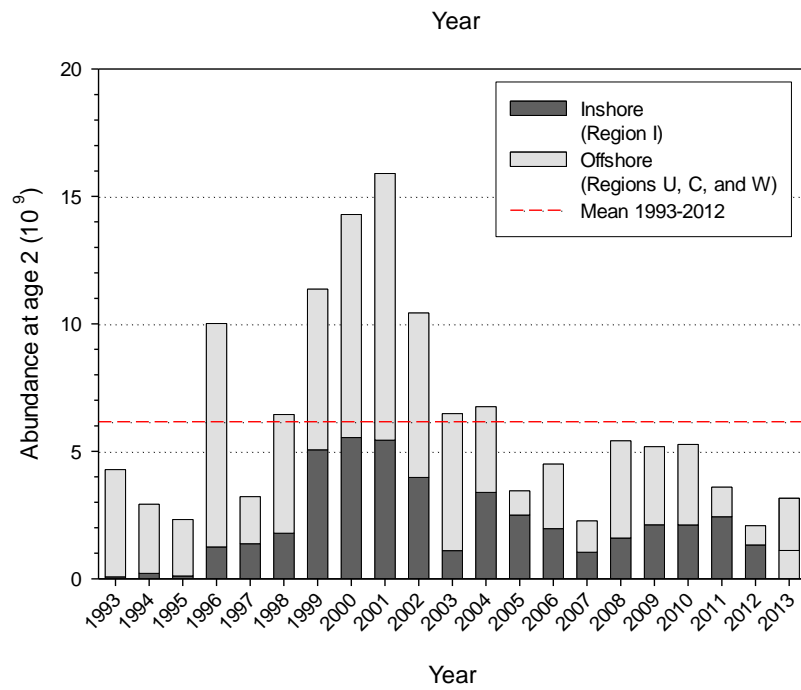


Figure 11a. *Pandalus borealis* in West Greenland: index of numbers at age 2, 1993–2013.

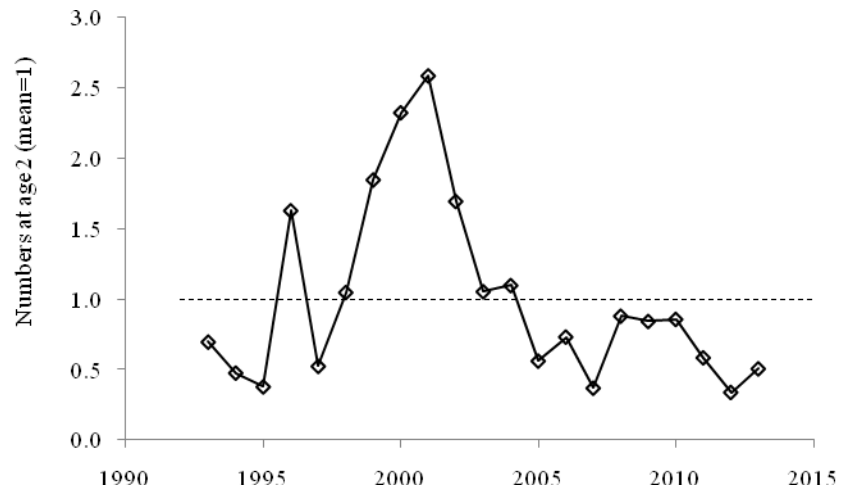


Figure 11b. *Pandalus borealis* in West Greenland: index of numbers at age 2, 1993–2013.

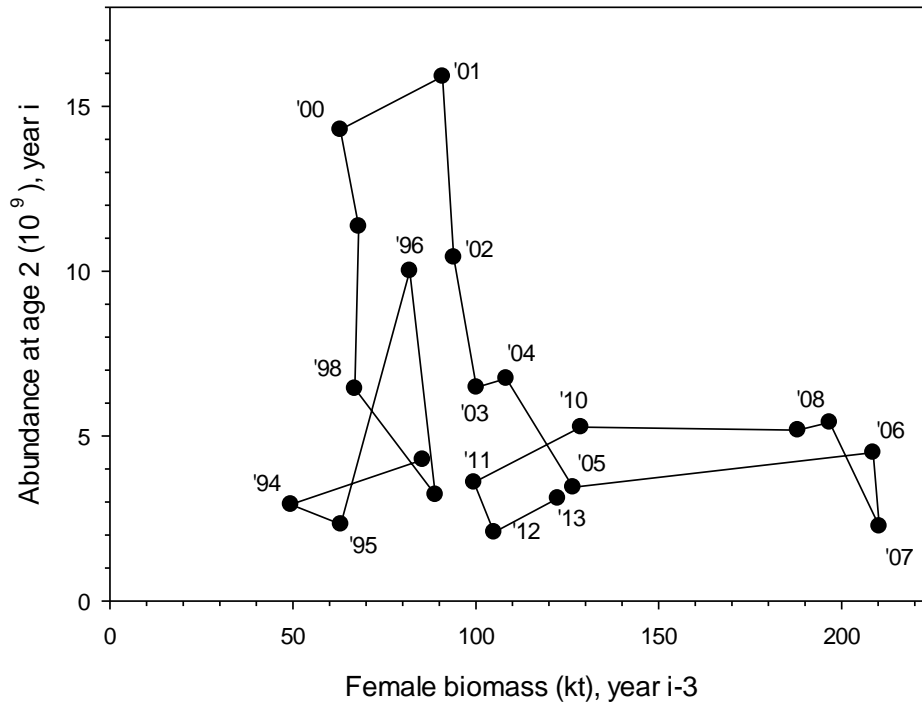


Figure 12. *Pandalus borealis* in West Greenland: survey estimates of numbers at age 2 in 1993–2013 against female biomass 3 years earlier (labels denote years in which age-2 numbers were estimated).

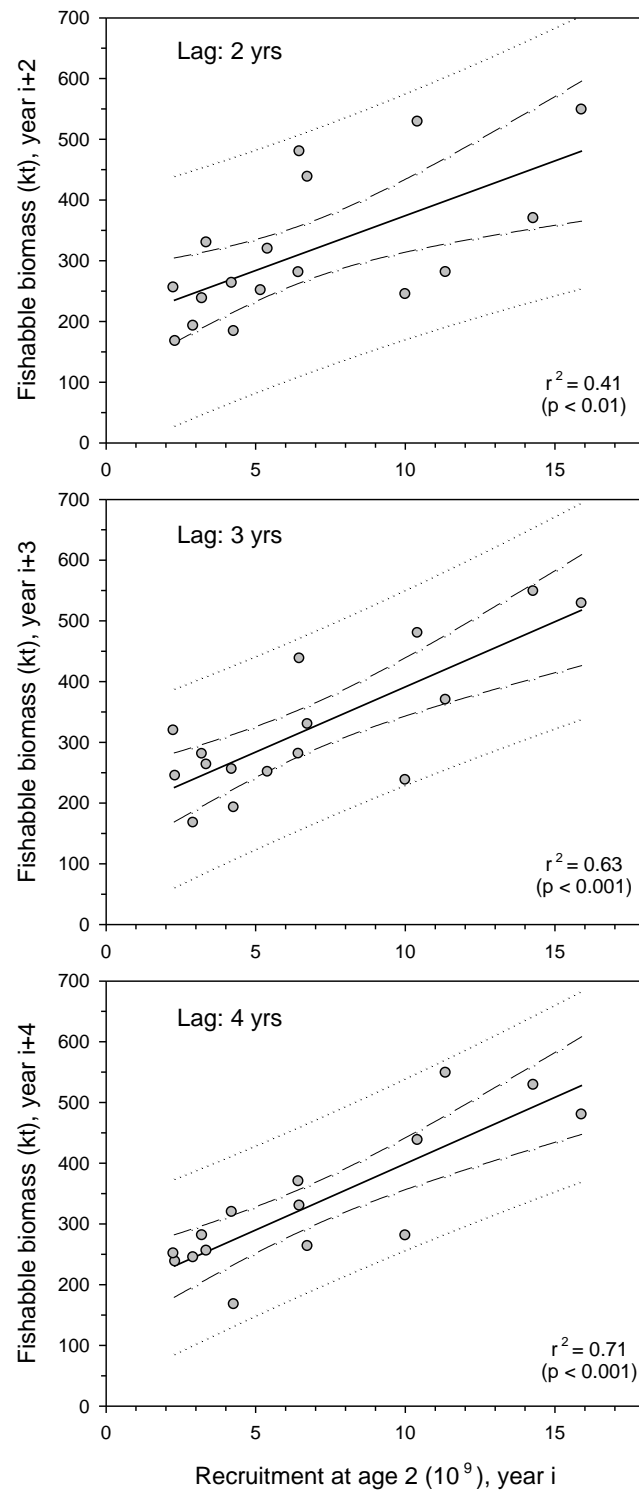


Figure 13. *Pandalus borealis* in West Greenland: lagged fishable biomass vs. survey estimates of numbers at age 2 from 1993 to 2009, 2008 or 2007 (linear regressions with 95% confidence and prediction intervals).

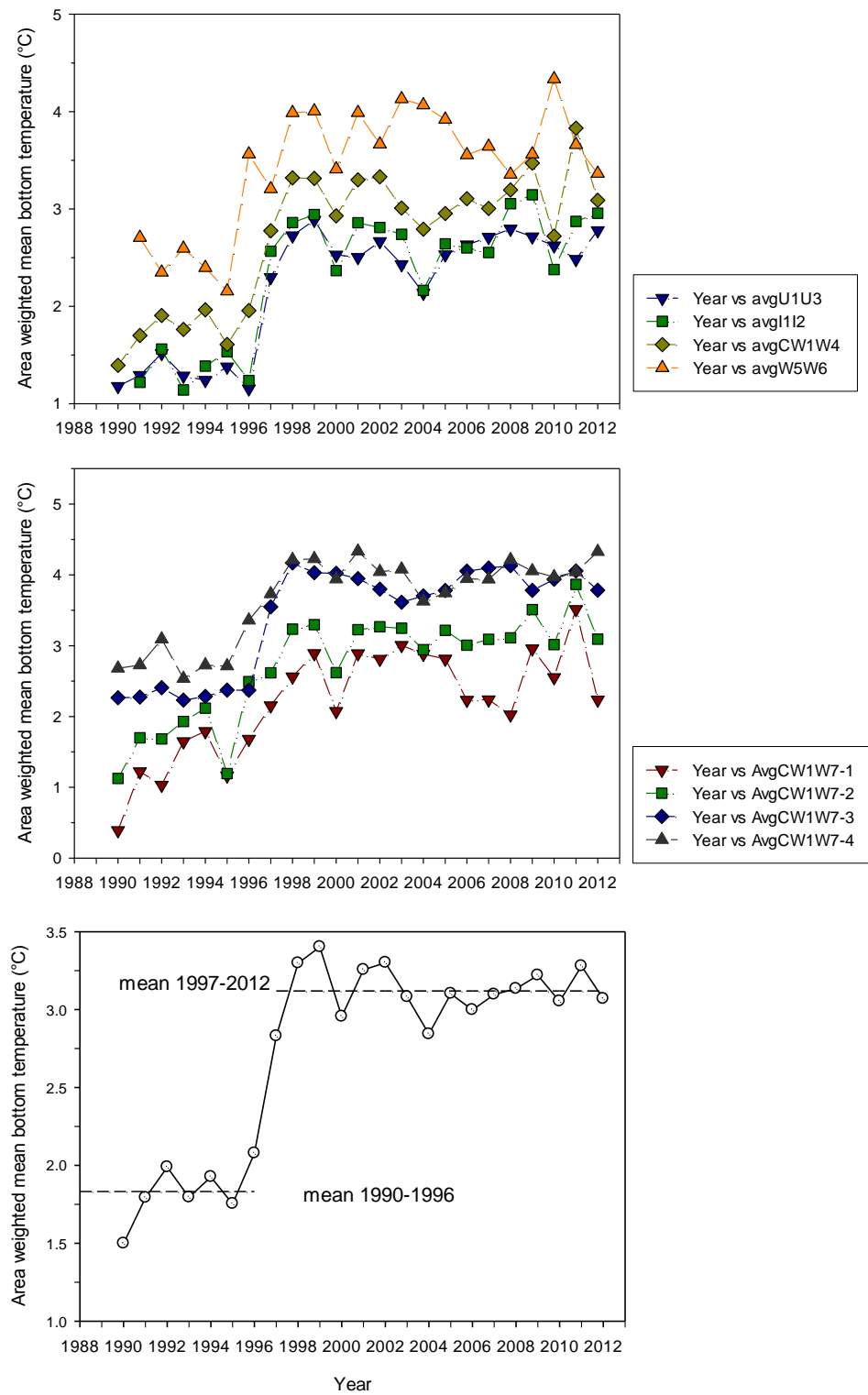


Figure 14. *Pandalus borealis* in West Greenland: area-weighted mean bottom temperature for survey regions (see Fig. 1 for locations), depth strata in offshore areas C and W1–W7, and the entire survey area in 1990–2012.