



Serial No. N6791

NAFO SCS Doc. 18/09

**SCIENTIFIC COUNCIL MEETING – JUNE 2018**

**Faroese Research Report 2017**

by

Luis Ridao Cruz

Faroe Marine Research Institute, Tórshavn, Faroe Islands

The present report represents information of Faroese fishing vessels operating in the NAFO Regulatory Area (NAFO-RA). The fishery targets mainly cod (*Gadus morhua*) in SA 3. Other species like Greenland halibut and redfish (*Sebastes* spp.) are also caught to a lesser extent. Official catch statistics are reported to NAFO by the Fisheries Inspection authorities (stored on STATLANT database). Collection of logbooks and biological measurements (fish length) of cod are provided by NAFO observers employed by the Faroese Ministry of Fisheries. Samples of fish length and weight measurements are also taken on board fishing vessels by crew members (non NAFO-observers).

Faroese landings of cod in NAFO SA 3 since 2010 are shown in Table 1. Catches have fluctuated from 1185 t. in 2010 to 3394 t. in 2014. Recorded catches in 2017 were 3165 t. The Faroese quota of cod in 3M is 22.35%. A complete list of catches by species from 2010 to 2017 is shown at the end of the document as annex.

**Table 1.** Faroese landings (tons) of cod in SA3 from 2010 to 2017. (Source: Statlant)

Area	2010	2011	2012	2013	2014	2015	2016	2017
3L	0	31	4	3	25	1	1	0
3M	1183	2211	2045	3144	3369	3319	3124	3165
3N	2	0	0	1	0	2	6	0
Total	1185	2242	2049	3147	3394	3321	3131	3165

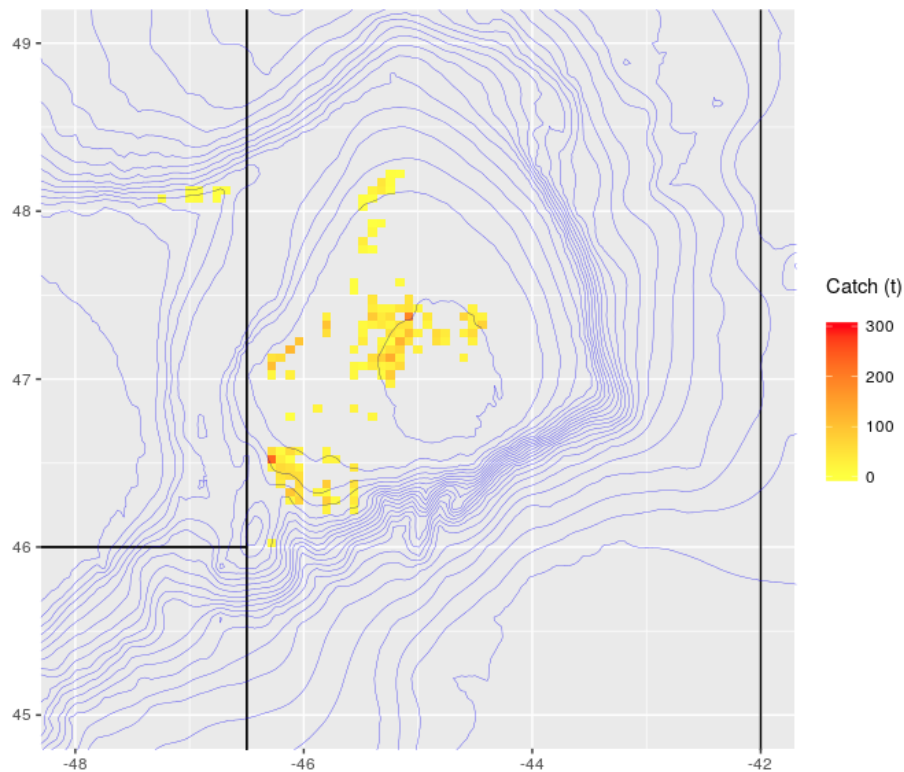
The number of fishing vessels operating in the NAFO area has varied between 4 and 13 from 2010 to 2016. From 2010 to 2012 most of the catch was taken by trawlers whereas the share of catches by longliners has increased substantially since 2013 (Table 2). Just 25% of the total Faroese catch was taken by trawlers in 2016 and in 2017 the fisheries was exclusively conducted by longliners (100%).



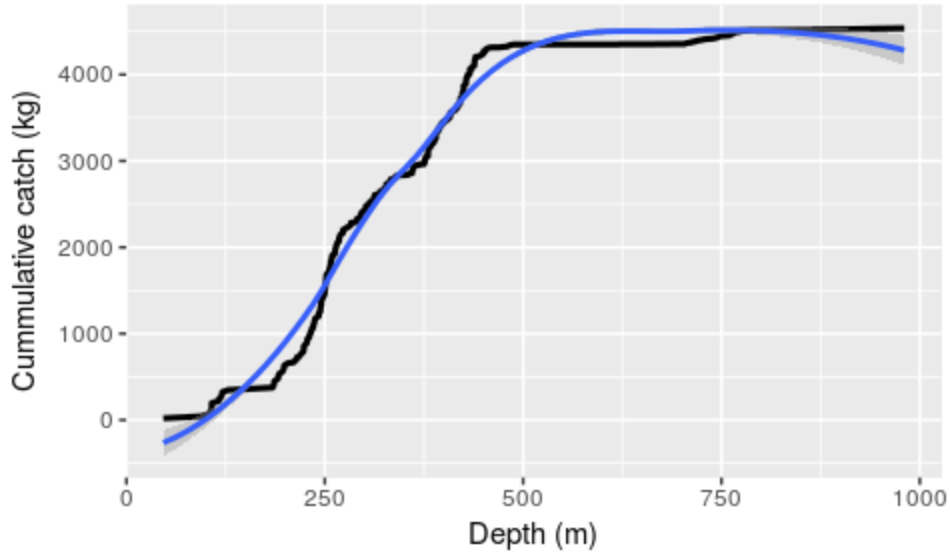
**Table 2.** Share of catches (percentage) of cod in SA3 by fleet segment. Longliners (LL) and trawlers (TR) since 2010.

Gear	2010	2011	2012	2013	2014	2015	2016	2017
LL	0%	2%	2%	92%	27%	63%	75%	100%
TR	100%	98%	98%	8%	73%	37%	25%	0%

The spatial distribution of the fishery (trawlers and longliners combined from NAFO-observers) from 2015 to 2017 is shown in Figure 1. Mean depth of hauls by trawlers is around 360 m. whereas longliners operate at average depths of 430 m. The catch profile with respect to depth is shown in Figure 2. Trawlers are fitted with mesh sizes ranging from 135 mm to 150 mm. in cod-ends. Catches are taken in the direct fishery.



**Fig. 1.** Spatial distribution of Faroese fishery (trawlers and longliners combined from NAFO-observers) from 2015 to 2017 (n=380).



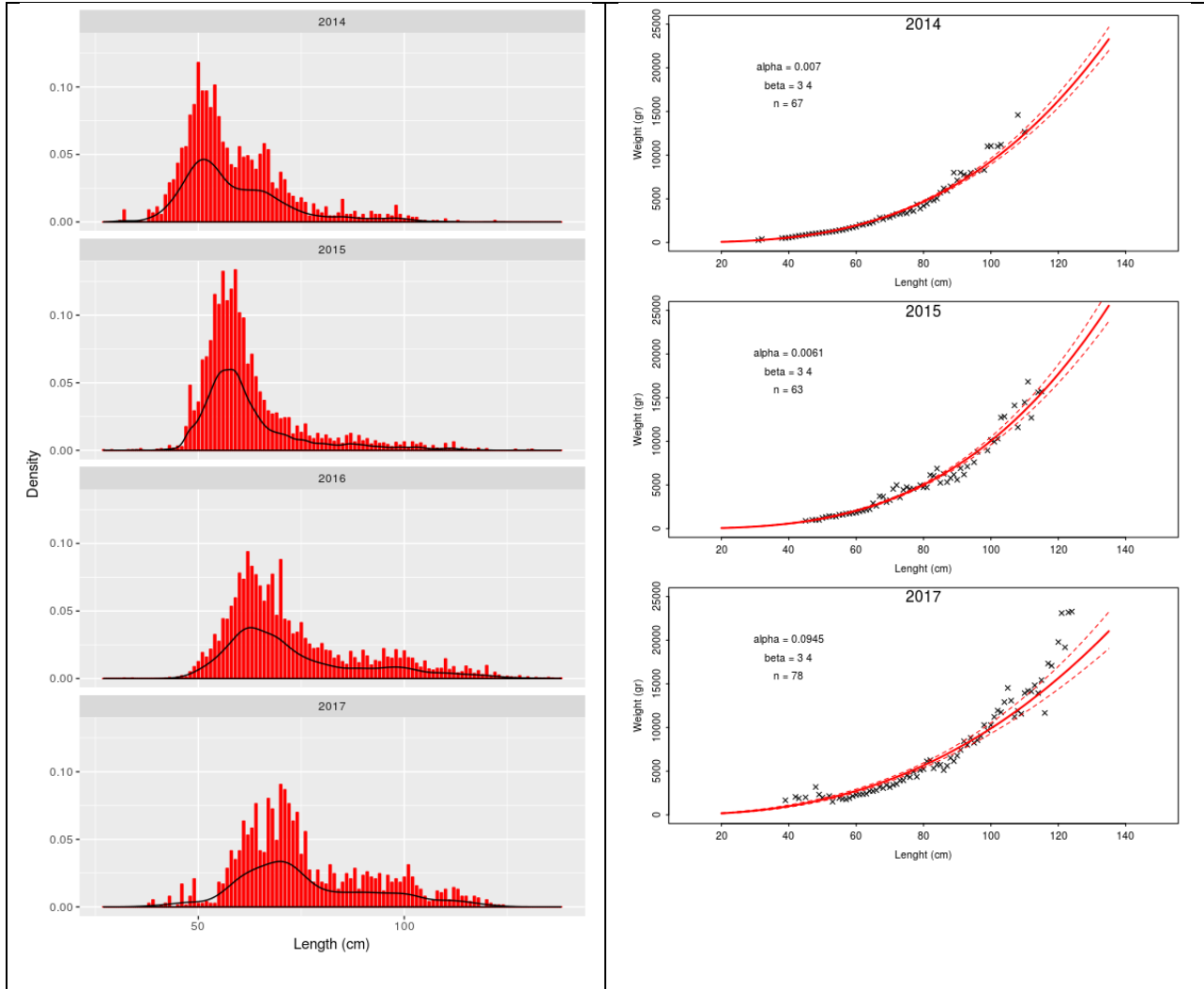
**Fig. 2.** Relation between cumulative catch and average depth (black line) for Faroese vessels from 2015 to 2017 (n=380). Blue curve is a smoothed curve.

Length distributions (sampled numbers) of 3M cod from 2014 to 2017 are presented in Table 3 and Figure 3. Average length size was estimated at 59 cm in 2014, 62 cm in 2015, 73 cm in 2016 and 76 cm in 2017. The number of individuals sampled was 1796, 5152, 4794 and 1546 from 2014 to 2017 respectively. The number of samples was 21 in 2014, 48 in 2015, 47 in 2016 and 55 in 2017. Samples from non-NAFO observers include individual weight measurements. Number of samples taken including weight measurements was 21 in 2014, 5 in 2015 and 29 in 2017 (Table 3 and Figure 3).

**Table 3.** Length distribution and length-weight relation of 3M cod from Faroese fishery (2014 - 2017). No weight measurements were available for 2016.

Length(cm)	2014	2015	2016	2017	Length (cm)	2014	2015	2016	2017
27		1			31	250			
29		1			32	400			
30					38	500			
31	1				39	512			1660
32	8		1		40	556			
33		1			41	615			
34		1	1		42	690			2058
35		1			43	772			1884
36	1	3			44	804			
37					45	861	900		2000
38	8			2	46	940			
39	6			4	47	978	1000		
40	10	2			48	1319	1000		3190
41	5	3		1	49	1291	1000		2325
42	18	1	1	2	50	1123	1227		1980
43	26	9	2	6	51	1159	1326		
44	28	4			52	1204	1436		2155
45	39	8	3	1	53	1255	1402		1500
46	49	7	5	13	54	1316	1395		
47	50	45	3	1	55	1413	1596		1920
48	71	124	12	6	56	1433	1585		1808
49	78	75	21	16	57	1541	1726		1768
50	106	92	30	2	58	1646	1721		1911
51	87	172	46	2	59	1731	1792		2149
52	87	178	38	3	60	1794	1818		2288
53	76	209	52	2	61	2027	1976		2335
54	91	297	78	2	62	2012	2045		2377
55	70	278	66	14	63	2170	2156		2423
56	53	341	106	13	64	2189	2233		2720
57	49	285	105	22	65	2314	2903		2713
58	38	307	128	32	66	2534	2602		2824
59	36	344	143	27	67	2841	3710		3192
60	50	262	187	32	68	2658	3667		3054
61	43	252	176	49	69	2905	3045		3398
62	44	164	225	41	70	2881	3268		3162
63	41	183	199	45	71	3081	4542		3430
64	35	140	184	59	72	3268	4990		3544
65	45	111	164	32	73	3272	3578		3931
66	52	95	137	31	74	3397	4446		3953
67	48	75	166	62	75	3345	4750		4515
68	26	69	185	56	76	3659	4548		4312
69	22	71	112	38	77	3590	4558		4946
70	33	60	211	70	78	4353			4364
71	28	62	105	67	79	3874	4978		5128
72	19	62	102	59	80	4198	4744		5242
73	17	31	79	49	81	4447	4733		6128
74	13	46	82	54	82	4837	6142		6275
75	16	34	99	30	83	4830	6055		5323
76	13	50	71	43	84	5042	6880		5750
77	4	27	61	21	85	5695	5250		5733
78	12	22	53	14	86	6191	6271		5118
79	8	32	54	21	87	5918	5315		5615
80	6	22	62	14	88	6439	5800		6515
81	10	29	50	13	89	8000	6180		6154
82	4	22	49	24	90	7109	5600		6773
83	4	17	36	19	91	8000	6913		7431
84	6	23	41	10	92	7762	6200		9528
85	15	13	30	14	93	7600	7120		8004
86	5	28	25	19	94	8000			8822
87	5	32	48	16	95		7600		8242
88	7	16	37	22	96	8200	8800		8540
89	3	28	28	10	97				9012
90	5	18	50	18	98	8300			10288
91	2	22	40	20	99	11000	8955		9672
92	7	12	24	17	100	11050	10135		10782
93	5	18	32	16	101		9950		11212
94	5	13	30	19	102	11000	10300		10865
95	2	14	53	9	103	11200	12720		11743
96	5	11	38	18	104		12837		12914
97	4	7	36	14	105				14532
98	11	15	51	16	106				13080
99	5	10	36	14	107		14107		11235
100	2	16	49	17	108	14600	11600		11904
101	4	5	37	24	109				11572
102	3	16	36	17	110	12677	14470		12529
103	3	11	27	12	111		16830		14198
104	1	14	20	10	112		12700		14137
105	1	9	31	6	113				14832
106		3	17	3	114		15600		13942
107	1	9	15	4	115		15700		15425
108	1	4	18	9					

109		3	18	8	116		11665
110	2	13	35	10	117		17326
111		3	16	4	118		17068
112		16	21	11	120		19790
113	1		10	10	121		23100
114		5	12	6	122		19180
115		3	22	6	123		23180
116		2	17	3	124		23280
117		1	9	6	131	27300	
118		4	14	5	Total	264568	600573
119			7				
120		3	23	4			
121			5	2			
122	1		11	1			
123			6	1			
124			3	1			
125			4				
126			3				
127		2	2				
128			5				
129			1				
130		1	3				
131		2					
132			2				
133			1				
134			1				
135			2				
136			1				
137							
138			1				
139							
Total	1796	5152	4794	1546			



**Fig. 3.** Length distribution and length-weight relation of 3M cod from Faroese fishery (2014 - 2017). No weight measurements were available for 2016.

**Annex . Faroese catches (tons) in the NAFO regulatory area from 2010 to 2017. (Source: Statlant)**

Year	Species	1A	1D	2G	3L	3M	3N	3O	Total
2010	Atlantic cod	0	0	0	0	1182.9	2.1	4.6	1189.6
2010	Atlantic halibut	0	0	0	0	2.3	1.2	2.8	6.3
2010	Atlantic redfishes	0	0	0	0	121.9	19.7	162.6	304.2
2010	European plaice	0	0	0	0	3.7	0	0	3.7
2010	Flatfishes	0	0	0	0	0.7	0	0	0.7
2010	Greenland halibut	126.2	152.3	0	206.1	5.7	0.2	1.1	491.6
2010	Haddock	0	0	0	0	13	0	0	13
2010	Ling	0	0	0	0	0.2	0	0	0.2
2010	Northern prawn	0	0	0	2502.7	495.3	0	0	2998
2010	Whiting	0	0	0	0	1.8	0	0	1.8
2010	Wolffishes(=Catfishes)	0	0	0	0	9.7	0	0	9.7
2011	Atlantic cod	0	0	0	30.8	2211.4	0	0	2242.2
2011	Atlantic halibut	0	0	0	0.4	0.8	0.5	0	1.7
2011	Atlantic redfishes	0	0	0	26.9	420.3	5.3	0	452.5
2011	European plaice	0	0	0	0	0.2	0	0	0.2
2011	Greenland halibut	101.8	0	0	216.9	3.8	0.1	0	322.6
2011	Ling	0	0	0	0	0	0	0	0
2011	Northern prawn	0	0	0	1447	0	0	0	1447
2011	Roundnose grenadier	0	0	0	0.4	0	0	0	0.4
2011	Wolffishes(=Catfishes)	0	0	0	0	0.5	0	0	0.5
2012	Atlantic cod	0	0	0	3.7	2045.2	0.1	4.4	2053.4
2012	Atlantic halibut	0	0	0	0.1	0.2	0.1	0.6	1
2012	Atlantic redfishes	0	0	0	28.5	148.7	2.2	101	280.4
2012	Greenland halibut	102.3	0	0	104.2	42.3	1.4	0	250.2
2012	Haddock	0	0	0	0	10.1	0	0	10.1
2012	Northern prawn	0	0	0	1036.8	0	0	0	1036.8
2012	Raja rays	0	0	0	0	0.2	0	0	0.2
2012	Roundnose grenadier	0	0	0	2.1	1.1	0	0	3.2
2013	Angler(=Monk)	0	0	0	0	0	0	0	0
2013	Atlantic cod	0	0	0	2.9	3144	0.6	8.6	3156.1
2013	Atlantic halibut	0	0	0	0.1	9.3	0.1	0.6	10.1
2013	Atlantic redfishes	0	0	0	64.5	74.1	3.6	57.9	200.1
2013	Atlantic wolffish	0	0	0	0	5.3	0	0	5.3
2013	Greenland halibut	0	102	0	194.7	4.8	0	0	301.5
2013	Haddock	0	0	0	0	0	0	0	0
2013	Northern prawn	0	0	0	592.2	0	0	0	592.2
2013	Raja rays	0	0	0	0	0.1	0	0	0.1
2013	Roundnose grenadier	0	0	0	0.7	0	0	0	0.7
2013	Tusk	0	0	0	0	0.4	0	0	0.4
2013	Wolffishes(=Catfishes)	0	0	0	0	26.4	0	0	26.4
2014	Atlantic cod	0	0	0	25	3369.1	0	0	3394.1
2014	Atlantic halibut	0	0	0	0	10.6	0	0	10.6
2014	Atlantic redfishes	0	0	0	0	5.1	0	0	5.1
2014	Atlantic wolffish	0	0	0	0	0.5	0	0	0.5
2014	Greenland halibut	0	0	0	118.4	2.4	0	0	120.8
2014	Haddock	0	0	0	0	0.1	0	0	0.1
2014	Northern prawn	0	0	0	437	0	0	0	437
2014	Roundnose grenadier	0	0	0	1	0.4	0	0	1.4
2014	Wolffishes(=Catfishes)	0	0	0	0	9.2	0	0	9.2

2015	Atlantic cod	0	0	0	1.2	3318.6	1.5	0	3321.3
2015	Atlantic halibut	0	0	0	0	7.3	0.9	0	8.2
2015	Atlantic redfishes	0	0	0	30.9	75.4	32.6	0	138.9
2015	Atlantic wolffish	0	0	0	0	0.2	0	0	0.2
2015	Black scabbardfish	0	0	8.3	0	0	0	0	8.3
2015	Blue ling	0	0	0.6	0	0	0	0	0.6
2015	Dogfish sharks	0	0	0.3	0	0	0	0	0.3
2015	Greenland halibut	101.7	0	0	44.8	156.2	0	0	302.7
2015	Haddock	0	0	0	0	0.6	0	0	0.6
2015	Roundnose grenadier	0	0	0.3	0	0	0	0	0.3
2015	Tusk	0	0	0.3	0	0.4	0	0	0.7
2015	Wolffishes(=Catfishes)	0	0	0	0	4.7	0	0	4.7
2016	Atlantic cod	0	0	0	0.6	3124.4	5.7	0	3130.7
2016	Atlantic halibut	0	0	0	0	8.4	0	0	8.4
2016	Atlantic redfishes	0	0	0	20.4	70	43	0	133.4
2016	Greenland halibut	103.4	0	0	24.1	165	0	0	292.5
2016	Haddock	0	0	0	0	0.6	0	0	0.6
2016	Roundnose grenadier	0	0	0	0	0.3	0	0	0.3
2016	Tusk	0	0	0	0	0.1	0	0	0.1
2016	Wolffishes(=Catfishes)	0	0	0	0	0.5	0	0	0.5
2017	Atlantic cod	0	0	0	0	3164.6	0	0	3164.6
2017	Atlantic halibut	0	0	0	0	14.4	0	0	14.4
2017	Atlantic redfishes	0	0	0	0.1	1.8	0	0	1.9
2017	Greenland halibut	0	0	0	135.1	44.8	0	0	179.9
2017	Roundnose grenadier	0	0	0	0.6	0	0	0	0.6