



Serial No. N6955

SCS Doc. 19/14

SCIENTIFIC COUNCIL MEETING - JUNE 2019**German Research Report for 2018**

H. O. Fock and C. Stransky

Johann Heinrich von Thünen-Institut
Federal Research Institute for Rural Areas, Forestry and Fisheries
Institute of Sea Fisheries
Herwigstr. 31, D-27572 Bremerhaven, Federal Republic of Germany
heino.fock@thuenen.de, christoph.stransky@thuenen.de

Sub-area 1**A. Status of the Fishery**

The fishery in 2018 directed towards Greenland halibut (*Reinhardtius hippoglossoides*) in Div. 1C+1D had an effort of 1532 hours which means a decrease as compared to 2012 and 2011 with 2004 hours and 2938 hours, respectively. In turn, reported landings were 1935 t from 1C+1D, with a relatively high CPUE.

By-catch in the fishery comprised some 4 % of total landings. The by-catch of roundnose grenadiers was 4.3 t and thus in the range observed in previous years (3-4 t in 2007, 2008 and 2010, but <1t in 2011 and 2012). Wolffish by-catch (Northern wolffish, *A. denticulatus*) was 13.5 t and by-catch of skates was 3.9 t. Table 1 lists a breakdown of the effort, landings, and non-standardised Greenland halibut CPUE by month and year. The annual trend is shown in Figure 1. The length distribution of Greenland halibut in Div. 1C, based on sampling of a commercial vessel, is provided in Table 2 and Fig. 2.

No pelagic fishery for pelagic redfish (*Sebastes mentella*) in the NAFO RA took place in 2018. The fisheries in 2000-2006 appeared as an intermezzo only. It occurred for the first time off Southwest Greenland in 1999, and increased substantially in 2000 due to a change in distribution patterns of the stock in westerly direction as derived from a biennial international hydro-acoustic surveys conducted in June/July by Iceland, Russia and Germany. After 2000, the fishery was conducted in the NAFO Regulatory Area and Greenland EEZ in Div. 1F during the 3rd quarter at depths above 500 m and targeted almost exclusively mature redfish with almost no discard and no by-catch of other species. No German fishery in the NAFO RA was reported since 2007.

In 2018, no commercial German cod fisheries took place in Div. 1F. The catch in 2008 was 2415 t. In 2009, catch dropped to 370 t. No cod was landed from SA-1F in 2010, in 2011 catches amounted to 4 t. In 2012, some 69 t were landed from Division 1D+1F, with a minute increase in 2013 amounting to 391 t.



B. Special Studies

1. Environment

No German groundfish survey off Greenland was conducted in 2018 due to technical problems. No fishery oceanographic measurements were performed off West Greenland.

2. Biological Studies

No German groundfish survey off Greenland was conducted in 2018 due to technical problems.

Sub-area 2

A. Status of the Fishery

2 J

No fisheries in 2007- 2018. In 2003, German trawlers conducted a pelagic fishery for pelagic redfish (*Sebastes mentella*) for the first time in the NAFO Regulatory Area of Div. 2J. The fishery was conducted in Div. 2J during the 3rd quarter only at depths above 500 m and targeted almost exclusively mature redfish with almost no discard and no by-catch of other species. No fishery was carried out since 2006.

2 H

No fisheries in 2007 - 2018. In 2006, one catch of 4 t redfish was recorded for 2 H.

B. Special Studies

1. Environment

No research in relation to environment was carried out by Germany in NAFO Sub-area 2.

2. Biological studies

Hydro-acoustic survey for pelagic redfish: see SA 1

Sub-area 3

A. Status of the Fishery

In 2007-2018, German fishing vessels did not fish in Sub-area 3.

B. Special Studies

1. Environment

No research in relation to environment was carried out by Germany in NAFO Sub-area 3.

2. Biological studies

No biological samplings or studies were performed by Germany in NAFO Sub-area 3.

Table 1. German effort (hours fished), landings (kg), unstandardized CPUE (kg/h) and accompanied standard deviations for Greenland halibut (*R. hippoglossoides*) in Sub-divisions 1C and 1D by month and by year, 2018. CPUE statistics calculated for catches > 100 kg only.

2018	Greenland halibut							
	NF-1C	NF-1C	NF-1C	NF-1C	NF-1D	NF-1D	NF-1D	NF-1D
	Landings	CPUE	CPUE	Effort (h)	Landings	CPUE	CPUE	Effort (h)
	(kg)				(kg)			
	Sum	Mean	Std	Sum	Sum	Mean	Std	Sum
month
1
2
3
4
5	153047	1143.4	508.58	128.5	37090	1918.35	3.75	19.33
6	175934	1218.3	276.91	142.25	117794	1176.12	144.64	99.58
7
8
9	459329	1155.4	512.78	410.08
10	66770	960.16	161.99	69.42	11400	1140	.	10
11	487711	1374.6	635.41	378.5	101313	1524.54	679.98	79.17
12	324792	2084.2	1130.22	195.58

Table 2. Raised length distribution for the German catches of Greenland halibut (*R. hippoglossoides*) in NAFO Div. 1C in 2018.

Length (cm)	Numbers
37	33
38	0
39	108.27
40	199.47
41	224.45
42	774.83
43	1129.21
44	1248.6
45	3274.29
46	4938.47
47	6355.49
48	9274.18
49	12786.67
50	14388.57
51	17202.87
52	17719.12
53	17981.7
54	16046.37
55	14874.46
56	11296.57
57	8598.41
58	6514.83
59	4989.79
60	4005.35
61	2736.04
62	2241.68
63	1637.43
64	1595.35
65	1356.47
66	1324.33
67	737.8
68	1137.53
69	521.03
70	377.16
71	522.59
72	215.71
73	261.61
74	319.19
75	306.26
76	299.57
77	76.63
78	180.57
79	106.54
80	161.99
81	245.99
82	133.43
83	50.7
84	103.62
85	160.57
86	191.89
87	79.05
88	92.15
89	222.7
90	171.99
91	47.81
92	128.99
93	88.08
94	53.79
95	24.6
96	77.8
97	219.02
98	22.67
99	64.68
100	64.19
101	42.92
102	71.13
103	0
104	17.94
105	54.53
106	
107	24.6
108	24.98

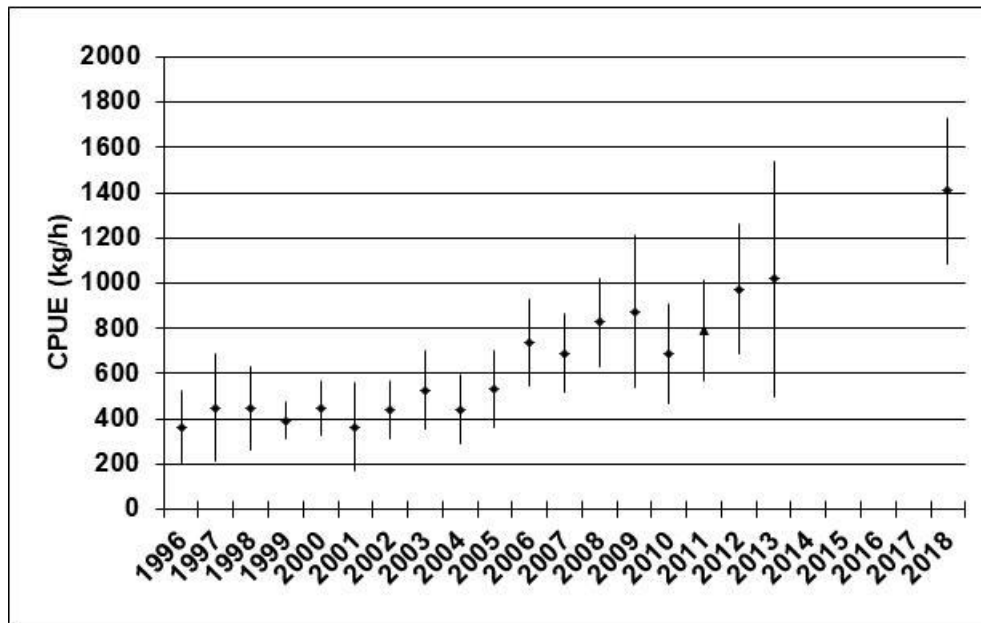


Figure 1. Greenland halibut in NAFO Div. 1D. Unstandardised CPUE and accompanied standard deviation by year as derived from German commercial landings mainly taken during the 4th quarters, 1996-2018. Respective values for 2018 are listed in Table 1.

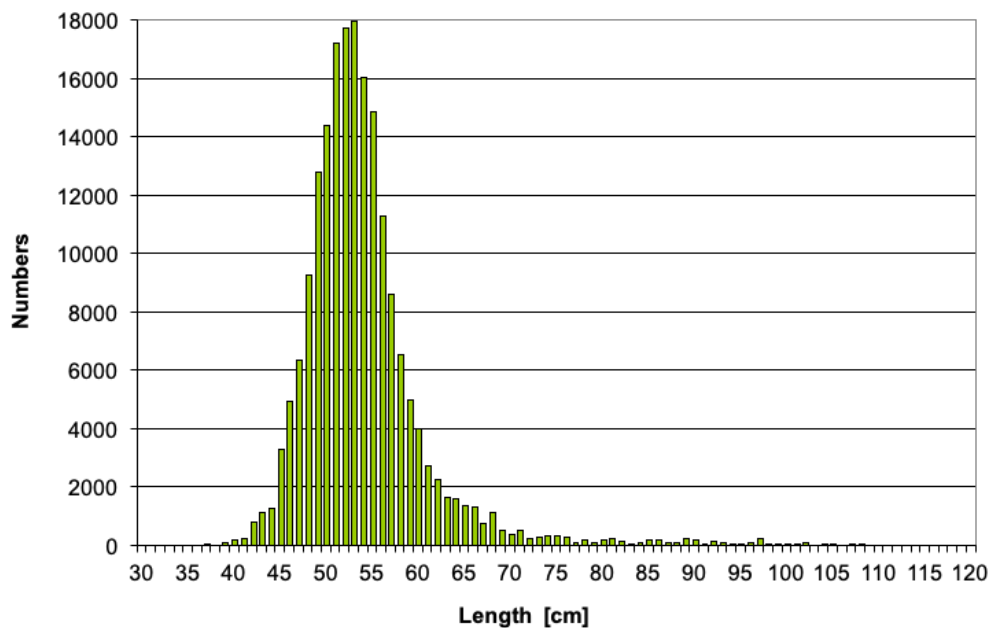


Figure 2. Greenland halibut in NAFO Div. 1C. Length distributions from German commercial landings 2018. Respective values are listed in Table 2.