

Serial No. 374Document No. 15ANNUAL MEETING - JUNE 1956United Kingdom Research Report for the Year 1955

By C.E. Lucas and R.S. Wimpenny

The fishing effort of first-class trawlers based on English and Welsh ports visiting the south-west coast of Greenland (Subarea 1) was lower than in previous years, most probably on account of the good fishing obtainable on the Iceland and Barents Sea grounds. Landings from Subarea 3 increased, however, as a result of the operations of a special trawler which processed its catch on board. The distribution of trawler voyages and their landings were as follows:

	<u>Voyages</u>	<u>Metric tons</u>
Subarea 1F	18	2,755
Subarea 1D	2	550
Subarea 3	4	3,627

From the landings in Subarea 1 a small number of length measurements were made and sampling of otoliths was begun, using a system of uniform selection. Both were insufficient for any deductions as to the importance of year-classes or length composition.

There were no landings by vessels based on Scottish ports from ICNAF subareas during 1955; consequently, neither sampling nor measurements of catches were necessary, although observation is being maintained on stocks, particularly halibut, in the waters between East Greenland and Iceland.

The second special cruise to investigate waters to the east of Greenland was made between 22nd April and 21st May in 1955, with special attention being paid to the distribution of halibut eggs and larvae, hydrography and line fishing for halibut. A report on this cruise will be appearing in the "Annales Biologiques" of the International Council for the Exploration of the Sea, Volume XII (Distant Northern Seas section) by A.D. McIntyre and J.H. Steele.

- THE END -



ANNUAL MEETING - JUNE 1956

Appendix to U.K. Research Report for 1955

The following data of samplings from U.K. trawlers from SW-Greenland, Cape Farvel-Danas Bank waters, 1955 can now be reported.

Length distribution 751 vessels		Age distribution, 26-VIII to 19-X (38 specimens)		
cms.	Fr. %	Age Group	Fr. %	M. lgth. cm.
45-49	1.4	IV	3	51
50-54	8.0	V	18	54
55-59	11.0	VI	10	59
60-64	15.6	VII	5	67
65-69	16.5	VIII	24	69
70-74	11.0	IX	0	-
75-79	12.2	X	24	86
80-84	9.6	XI	8	80
85-89	9.6	XII	0	-
90-94	4.3	XIII	5	74
95-99	0.8	XVI	3	123

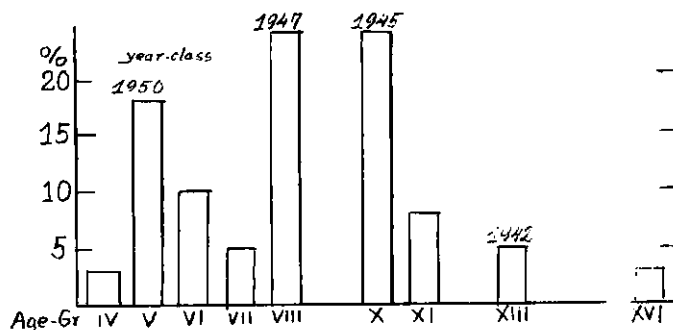
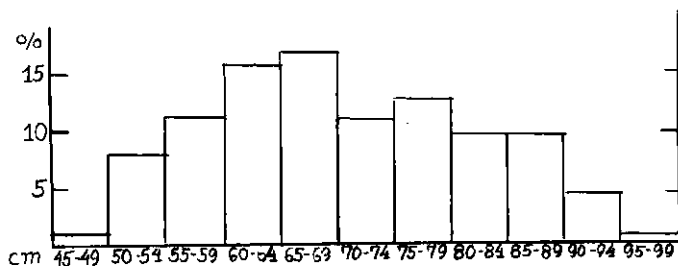


Figure 1. Distribution of length (above) and age (below) of cod sampled for U.K. vessels in 1955 off SW. Greenland.